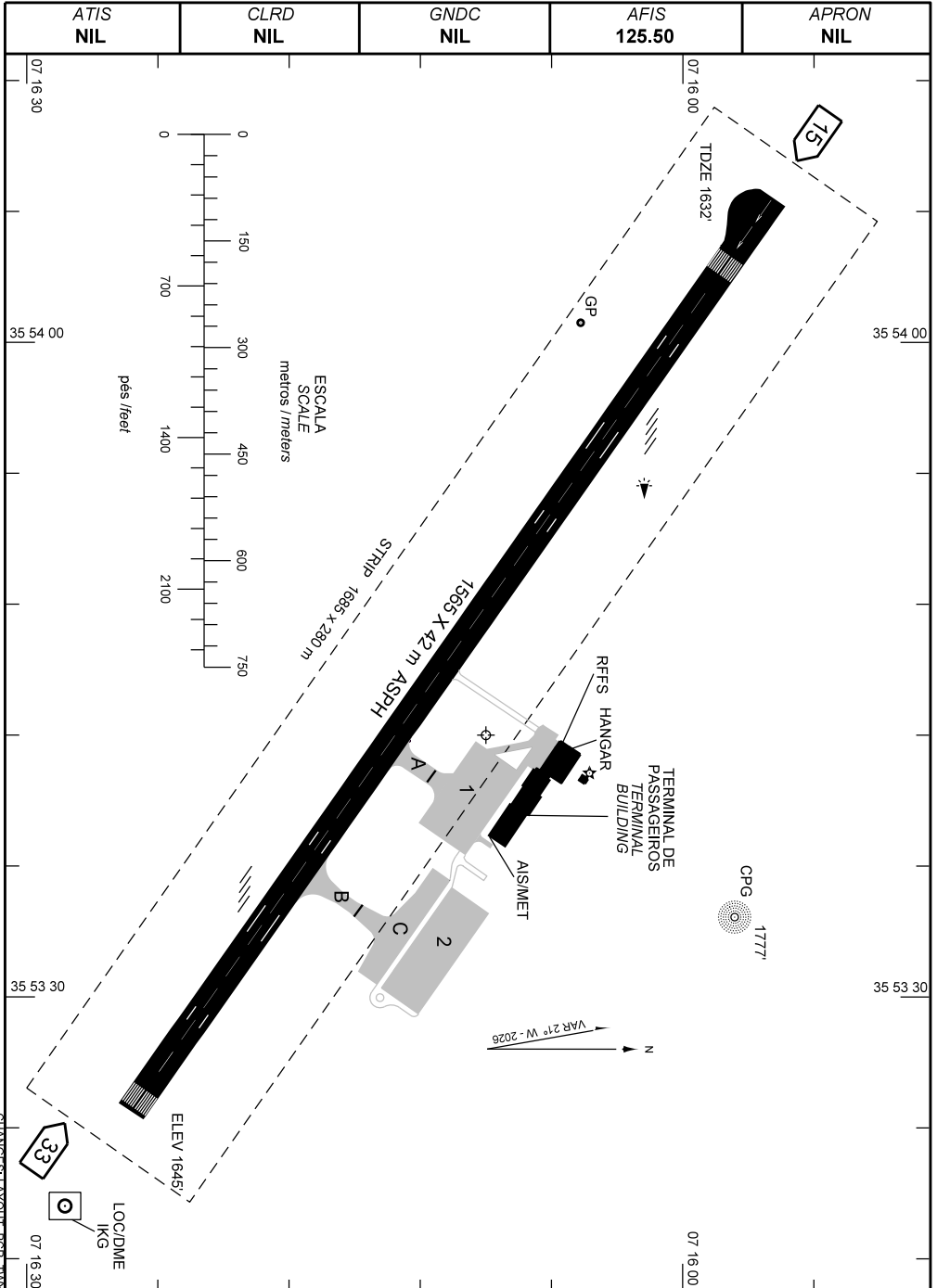


AD ELEV: 1647'

ARP S07 16 09 W035 53 42

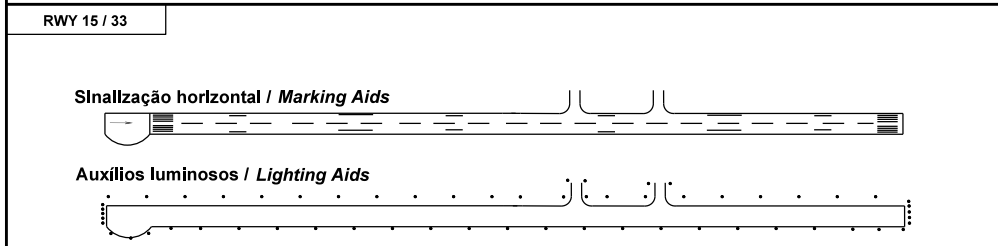


ADC - SBKG: INFORMAÇÕES COMPLEMENTARES / COMPLEMENTARY INFORMATION

CARACTERÍSTICAS FÍSICAS / PHYSICAL CHARACTERISTICS											
PISTA RUNWAY				DIMENSÕES(m) DIMENSIONS(m)				PCR	TIPO DE SUPERFÍCIE SURFACE KIND		
RWY	BRG MAG	Tipo Type	RCD	RWY	SWY	CWY	STRIP	RWY	RWY	SWY	
a	b	c	d	e	f	g	h	i	j	k	
15	146	NPA	4C	1565x42			1685 x 280	500/F/A/X/T	ASPH		
33	326	NPA	4C								

DISTÂNCIAS DECLARADAS, AUXÍLIOS VISUAIS E COORDENADAS DAS CABECEIRAS DECLARED DISTANCES, VISUAL AIDS AND THRESHOLD COORDINATES							
RWY	TORA(m)	TODA(m)	ASDA(m)	LDA(m)	AUXÍLIOS / AIDS	ALTURA GEOIDAL(m) GEOID HEIGHT(m)	COORDENADAS COORDINATES
15	1565	1565	1565	1475	PAPI	- 4,22	S07 15 58 W035 54 04
33	1475	1565	1475	1475	PAPI	- 4,24	S07 16 25 W035 53 25

SERVIÇO DE SALVAMENTO E CONTRAINCÊNDIO / RESCUE AND FIRE FIGHTING SERVICE: RFFS REQ - 5



RMK:

- 1) MEHT: RWY 15 - PAPI - 43FT
RWY 33 - PAPI - 56FT
- 2) THR 15 DESLOCADA EM 90 M

CHANGES: LAYOUT - PCR, TMY.