

**INSTRUMENT APPROACH
CHART (IAC)**

SALVADOR / Deputado Luís Eduardo Magalhães, INTL (SBSV)

AD ELEV: 66'

RNP RWY 28

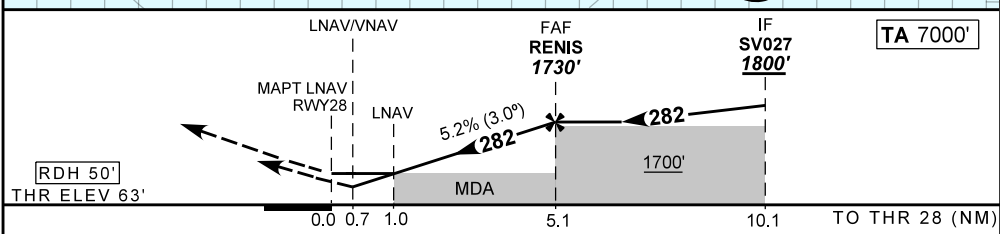
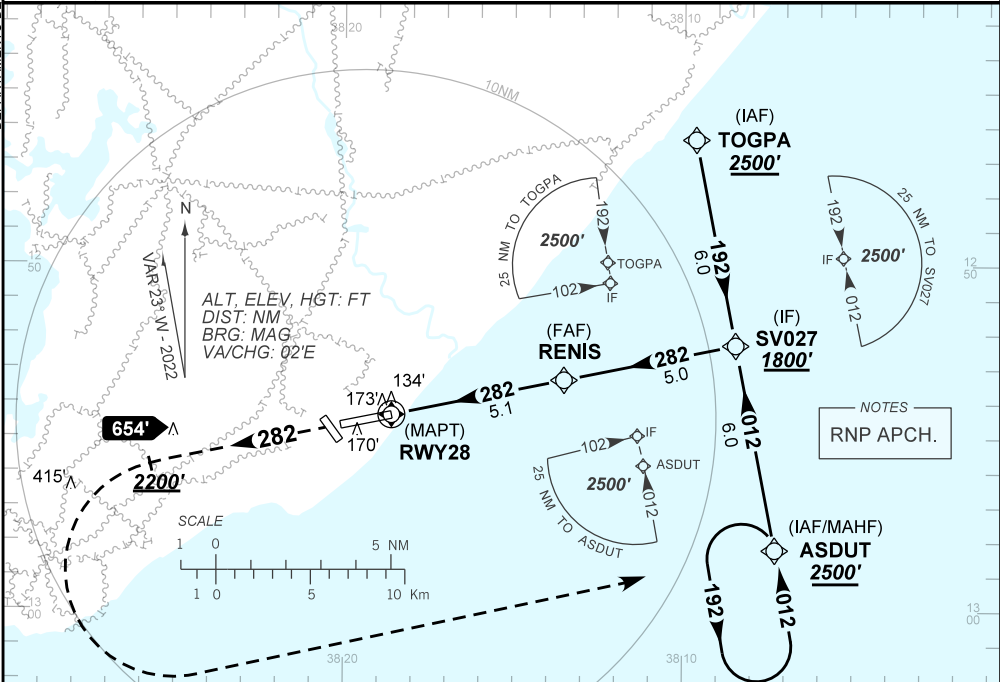
D-ATIS 127.75	APP SALVADOR 119.35 119.80 120.80 129.45	TWR SALVADOR 118.30 118.60 118.95 121.10	GNDC SALVADOR 121.90
-------------------------	--	--	--------------------------------

TEMP LNAV/VNAV MIN 0°C / MAX 46°C	FINAL CRS 282°	FAF: 1730'	LNAV/VNAV DA / (OCH): 334' / (271')	LNAV MDA / (OCH): 420' / (360')
---	--------------------------	----------------------	---	---

APCH Perdida: Subir para **2500'**. Manter proa **282** até cruzar **2200'**. Após, curvar à ESQUERDA direto ASDUT para espera.

Missed APCH: Climb to **2500'**. Maintain heading **282** until passing **2200'**. After, turn LEFT direct to ASDUT for holding.

DEPARTAMENTO DE CONTROLE DO ESPAÇO AEREO



RWY28	1.0	2.0	3.0	4.0	RENIS		Ground Speed (KT)	090	110	130	150	170	190
ALT	420	750	1068	1387	1730		FPM	500	600	700	800	900	NA
(HGT)	360	687	1005	1324	1667		FAF-MAPT	NA					

STRAIGHT-IN	CAT	A	B	C	D	E	
	DA / (OCH)	334' / (271')					NA
LNAV/VNAV	ALS/NO ALS/ RVR ALS (m)	NIL / 1300 / NIL					
	MDA / (OCH)	420' / (360')					
LNAV	ALS/NO ALS/ RVR ALS (m)	NIL / 1600 / NIL					
CIRCLING	MDA / (OCH)	NA					
	VIS (m)						

CHANGES: IDENT, MINM, PROC.