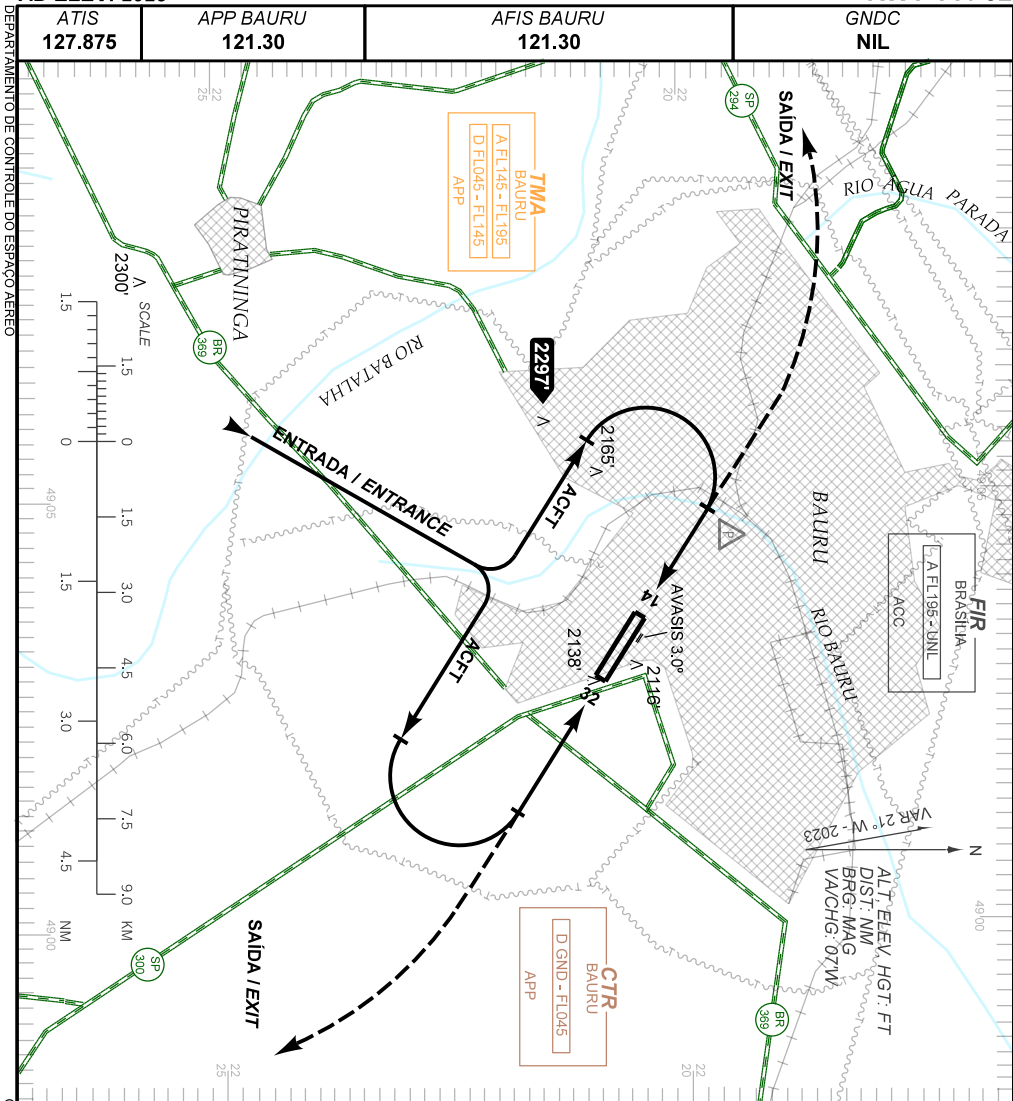


VISUAL APPROACH CHART
(VAC)

BAURU / Bauru (SBBU)

AD ELEV: 2025'

RWY 14 / 32



- RMK:**
- 1- AUTORIZADO SOMENTE / ONLY AUTHORIZED CAT A, B, C, D.
 - 2- ALTITUDES MÍNIMAS NO CIRCUITO DE TRÁFEGO:
MINIMUM ALTITUDES IN THE TRAFFIC CIRCUIT:
- CAT A, B, C: 3100'
- CAT D: 3600'
 - 3- OBSERVAR ACFT E PLANADORES VOO DE INSTRUÇÃO PRÓXIMO AO AD.
OBSERVE ACFT AND GLIDERS IN INSTRUCTION FLIGHT NEARBY THE AD.
 - 4- CIRCUITO DE TRÁFEGO SOMENTE PELO SETOR SUDOESTE DO AD.
TRAFFIC CIRCUIT ONLY BY SW SECTOR OF AD.
 - 5- AVASIS: PONTO DE TOQUE COINCIDE COM THR 14 E NÃO CUMPRE MEHT PREVISTA DE 30 FT.
AVASIS: TOUCH POINT MATCHES THR 14 AND DOES NOT COMPLY 30 FT EXPECTED MEHT.

DEPARTAMENTO DE CONTROLE DO ESPAÇO AEREO

CHANGES: DEC VAR: LAYOUT: MNM CRT: OSST.