

**INSTRUMENT APPROACH  
CHART (IAC)**

**BRASÍLIA / Pres. Juscelino Kubitschek, INTL (SBBR)**

**RNP Y RWY 11R (AR)**

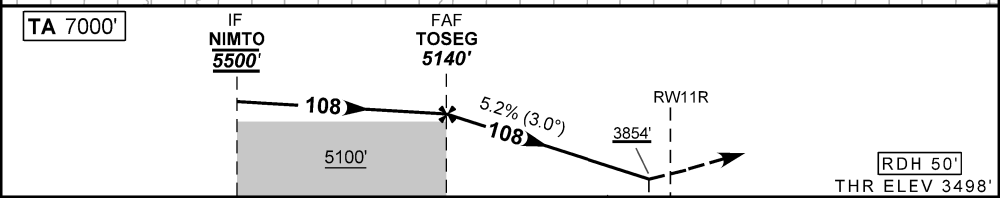
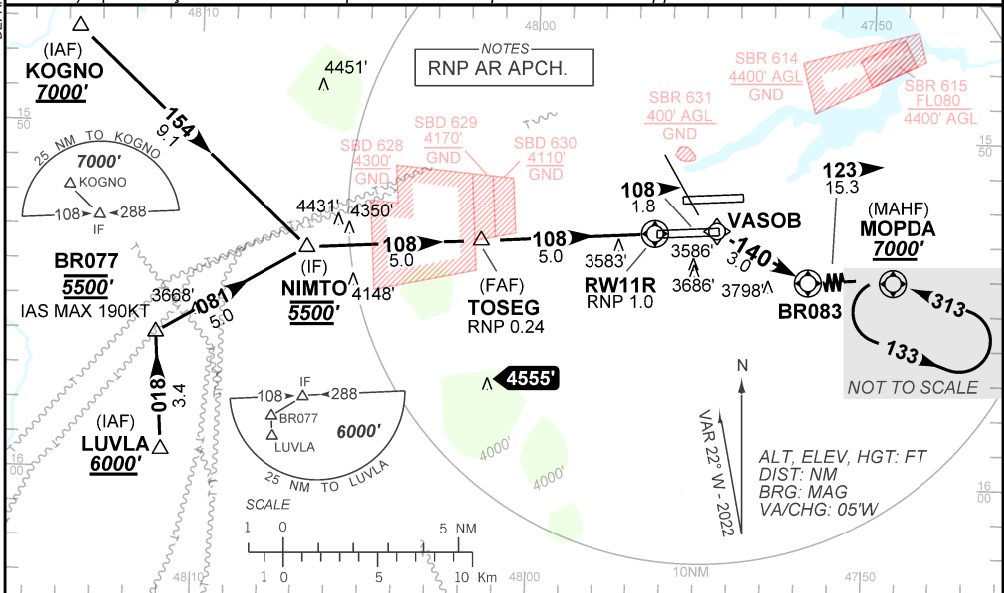
**AD ELEV: 3498'**

D-ATIS <b>127.80</b>	APP BRASÍLIA <b>119.20 119.50 119.70 120.00 120.65 129.15 129.60</b>	TWR BRASÍLIA <b>118.10 118.45 118.75</b>	GNDC BRASÍLIA <b>121.80 121.95</b>
-------------------------	---	---	---------------------------------------

TEMP LNAV/VNAV <b>MIN 0°C / MAX 50°C</b>	FINAL CRS <b>108°</b>	FAF: <b>5140'</b>	RNP 0.24 DA / (OCH): <b>3854' / (356')</b>	<b>N/A</b>
---	--------------------------	----------------------	---	------------

APCH Perdida: Subir para **7000'**. Manter rumo **108** até VASOB. Após, curvar à DIREITA rumo **140** até BR083. Após, curvar à ESQUERDA rumo **123** até MOPDA para espera. Missed APCH: Climb to **7000'**. Maintain course **108** until VASOB. After, turn RIGHT course **140** until BR083. After, turn LEFT course **123** until MOPDA for holding.

RMK: 1) Não efetuar transição RNP da aproximação perdida antes de 1.0 NM da RWY 11R.  
Do not perform RNP transition of Missed Approach before 1.0 NM from RWY 11R.  
2) Aproximações Paralelas Independentes / Independent Parallel Approaches.



TO THR 11R (NM)	10.0	5.0	1.0	0.0
-----------------	------	-----	-----	-----

	TOSEG	4.0	3.0	2.0	1.0	RWY11R	Ground Speed (KT)	090	110	130	150	170	190
	5140	4822	4503	4185	3854	ALT	FPM	500	600	700	800	900	NA
	1642	1324	1005	687	356	(HGT)	FAF-MAPT	NA					

STRAIGHT-IN	CAT	A	B	C	D	E	
	DA / (OCH)	3854' / (356')					NA
RNP 0.24	ALS/SNO ALS/ RVR ALS (m)	900 / 1600 / 850					NA

**AUTORIZAÇÃO ESPECIAL PARA AERONAVE E TRIPULAÇÃO REQUERIDA  
SPECIAL AUTHORIZATION FOR AIRCRAFT AND CREW REQUIRED**

DEPARTAMENTO DE CONTROLE DO ESPAÇO AÉREO

CHANGES: IDENT, LAYOUT, PROC.