

INSTRUMENT APPROACH
CHART (IAC)

RIO DE JANEIRO / Jacarepaguá - Roberto Marinho (SBJR)

RNP 026

PINS - (CAT H)

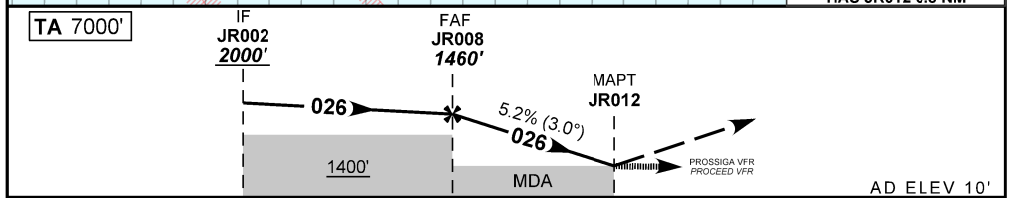
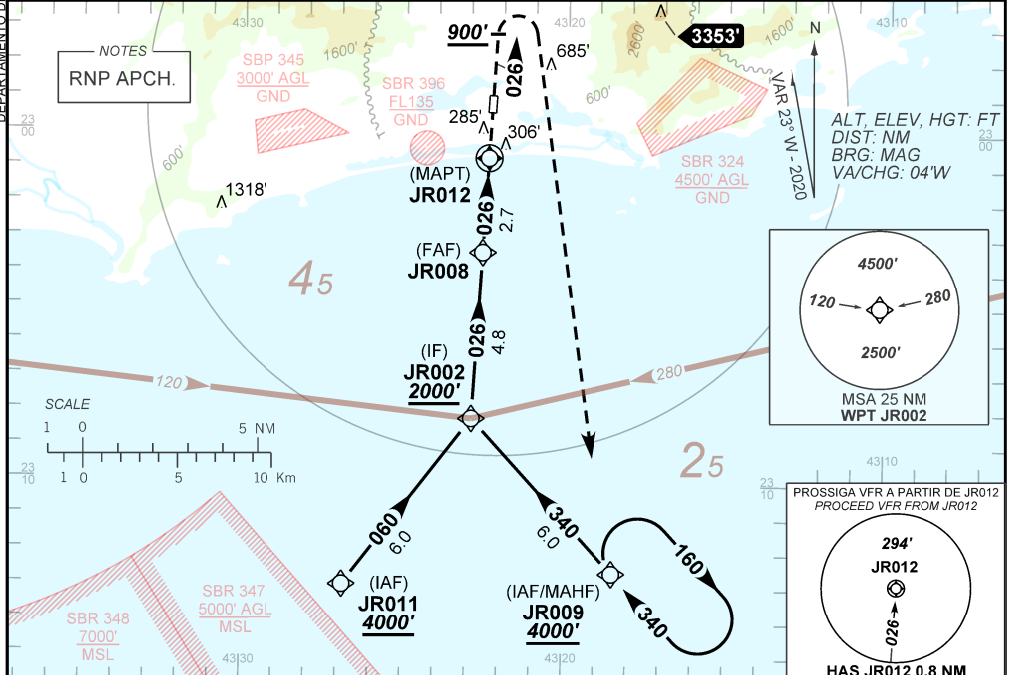
AD ELEV: 10'

ATIS NIL	119.00 119.35 120.55 126.20 128.90 129.20 129.80 132.50 133.30	APP RIO FINAL CRS 026°	FAF: 1460'	TWR JACAREPAGUÁ 118.40	LNAV MDA / (OCH): 600' / (590')	GNDC JACAREPAGUÁ 121.60
-------------	---	------------------------------	---------------	---------------------------	------------------------------------	----------------------------

N/A	FINAL CRS 026°	FAF: 1460'	LNAV MDA / (OCH): 600' / (590')	N/A
-----	-------------------	---------------	------------------------------------	-----

APCH Perdida: Subir para **4000'**. Manter proa **026** até **900'**. Após, curvar à DIREITA direto JR009 para espera.
Missed APCH: Climb to **4000'**. Maintain heading **026** until **900'**. After, turn RIGHT direct JR009 for holding.

RMK: 1) Informações complementares no verso.
See reverse side for additional information.



TO MAPT (NM)	7.5	2.7	0.0
TO THR 03 (NM)	8.8	4.0	1.3

	JR008	2.0	1.0	0.0	MAPT	Ground Speed (KT)	060	070	080	090	100
	1460	1237	919	600	ALT	FPM	400	400	500	500	NA
	NIL				(HGT)	FAF-MAPT			NIL		

STRAIGHT-IN	CAT	H
LNAV	MDA / (OCH)	600' / (590')
	VIS (m)	1500
CIRCLING	MDA / (OCH)	NA
	VIS (m)	

— R M K —

- 2 - Requerida autorização do APP-RIO para início do procedimento.
Authorization required from APP-RIO to initiate the procedure.
- 3 - Requerido FPL "Y" com mudança de regras de voo para VFR em JR012.
FPL "Y" required with flight rules change to VFR at JR012.
- 4 - Procedimento exclusivo para helicópteros e utilizável somente quando as condições meteorológicas estejam abaixo de VFR para asa fixa.
Exclusive procedure for helicopters and usable only when weather conditions are below VFR for fixed wing.

DEPARTAMENTO DE CONTROLE DO ESPAÇO AÉREO

CHANGES: EAC, FREQ, IDENT, LAYOUT.