

DEPARTURE CHART
INSTRUMENT (SID)

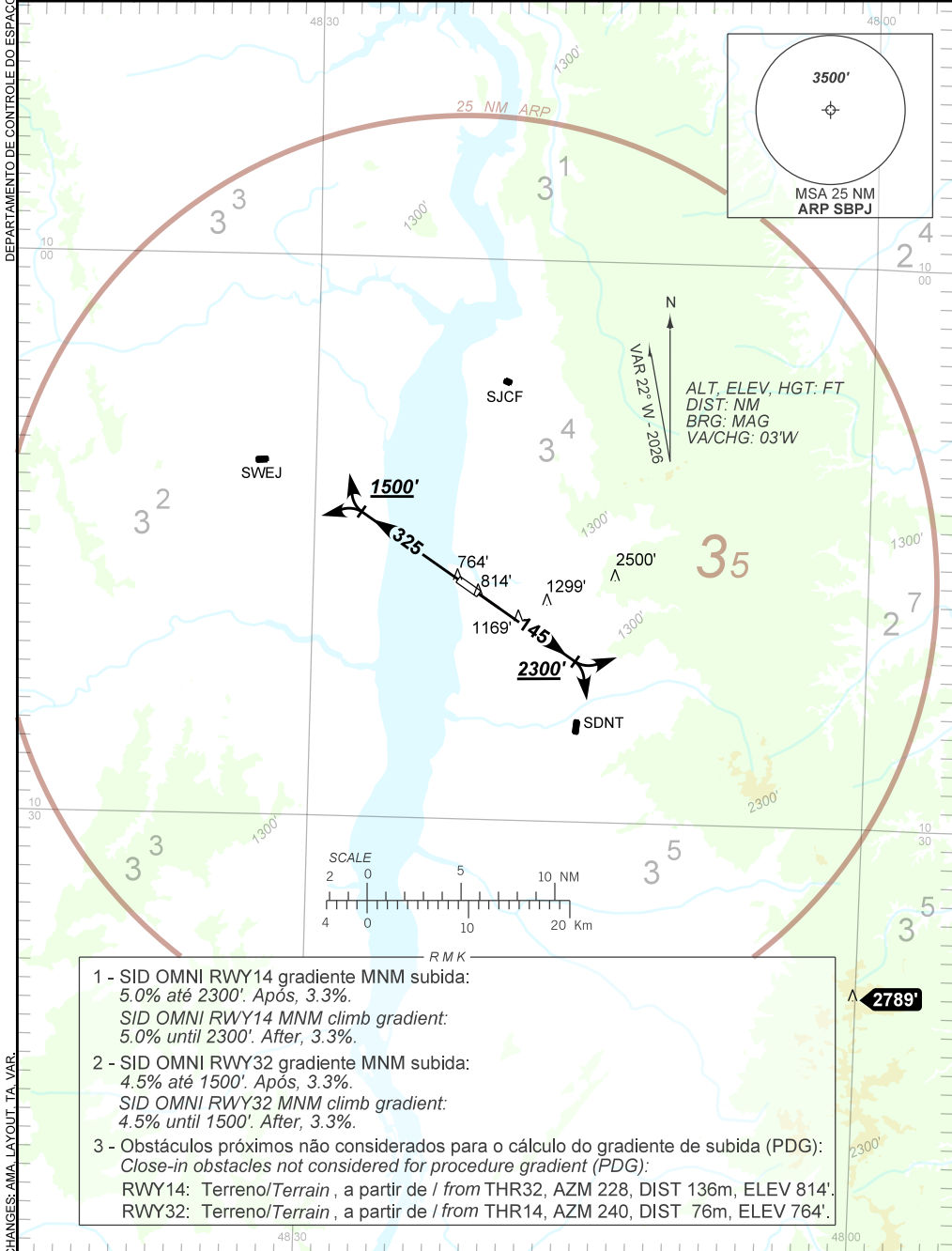
PALMAS / Brigadeiro Lysias Rodrigues (SBPJ)

RWY 14/32

OMNI

AD ELEV: 774'

TA 10000'	ATIS NIL	AFIS PALMAS 119.00	TWR PALMAS 118.00	APP PALMAS 119.00	ACC AMAZÔNICO 126.15 133.70	ACC BRASÍLIA 124.70 133.05
-----------	----------	--------------------	-------------------	-------------------	-----------------------------	----------------------------



- 1 - SID OMNI RWY14 gradiente MNM subida: 5.0% até 2300'. Após, 3.3%.
SID OMNI RWY14 MNM climb gradient: 5.0% until 2300'. After, 3.3%.
- 2 - SID OMNI RWY32 gradiente MNM subida: 4.5% até 1500'. Após, 3.3%.
SID OMNI RWY32 MNM climb gradient: 4.5% until 1500'. After, 3.3%.
- 3 - Obstáculos próximos não considerados para o cálculo do gradiente de subida (PDG):
Close-in obstacles not considered for procedure gradient (PDG):
RWY14: Terreno/Terrain , a partir de / from THR32, AZM 228, DIST 136m, ELEV 814'.
RWY32: Terreno/Terrain , a partir de / from THR14, AZM 240, DIST 76m, ELEV 764'.

CHANGES: AMA LAYOUT, TA, VAR.