

STANDARD DEPARTURE CHART
INSTRUMENT (SID)

JOINVILLE / Lauro Carneiro de Loyola (SBJV)

RWY 33

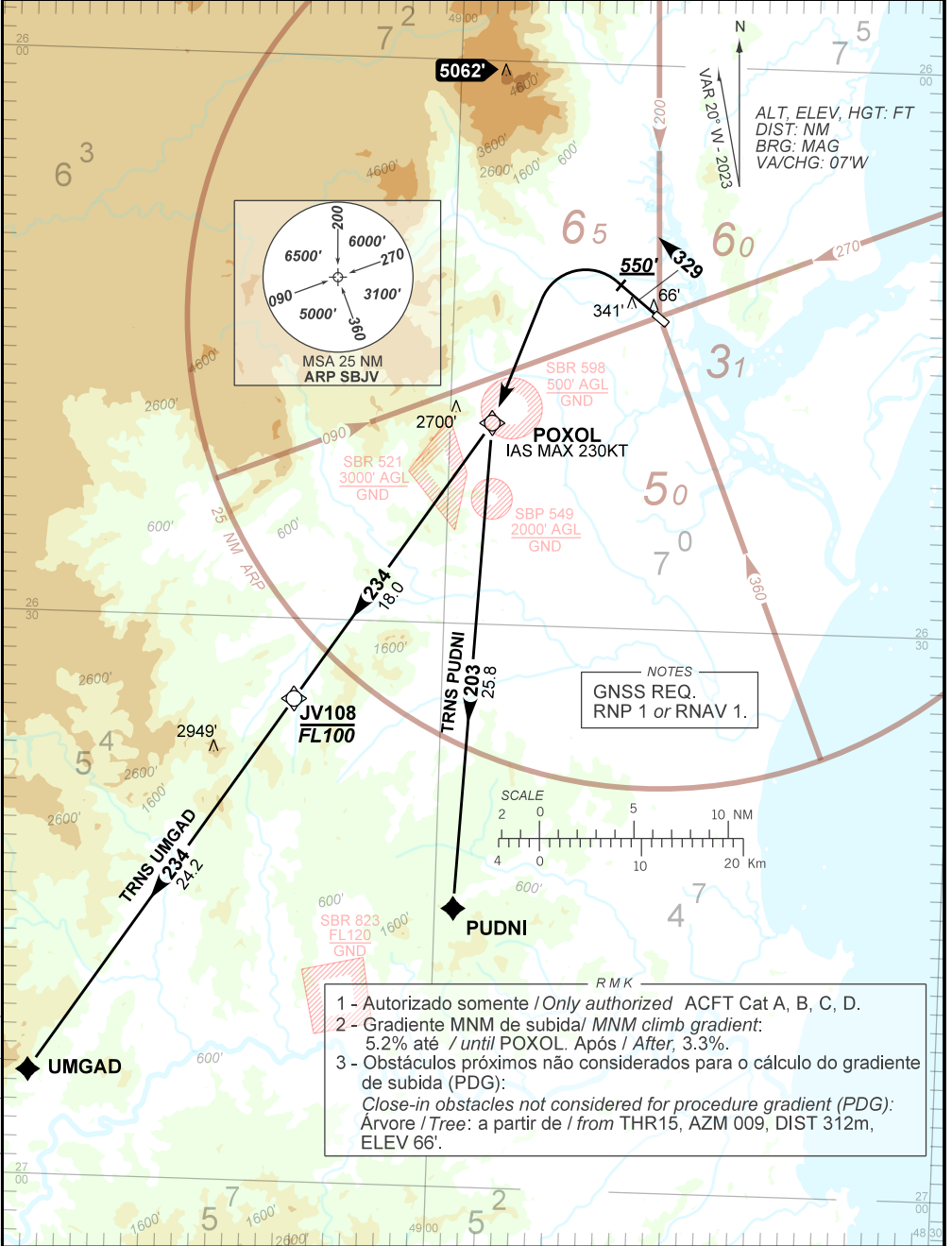
RNAV POXOL 1B

AD ELEV: 15'

TA 9000'	ATIS 127.85	TWR JOINVILLE 118.00	APP CURITIBA 119.95 119.70 120.65 120.95 129.55 133.15	ACC CURITIBA 124.775 135.00 126.10 127.50 128.45 135.85
----------	-------------	----------------------	---	--

DEPARTAMENTO DE CONTROLE DO ESPAÇO AÉREO

CHANGES: EAC LAYOUT, OBST, PROC, VAR.



NOTES
GNSS REQ.
RNP 1 or RNAV 1.

RMK

- 1 - Autorizado somente / Only authorized ACFT Cat A, B, C, D.
- 2 - Gradiente MNM de subida/ MNM climb gradient: 5.2% até / until POXOL. Após / After, 3.3%.
- 3 - Obstáculos próximos não considerados para o cálculo do gradiente de subida (PDG):
Close-in obstacles not considered for procedure gradient (PDG):
Árvore / Tree: a partir de / from THR15, AZM 009, DIST 312m, ELEV 66'.