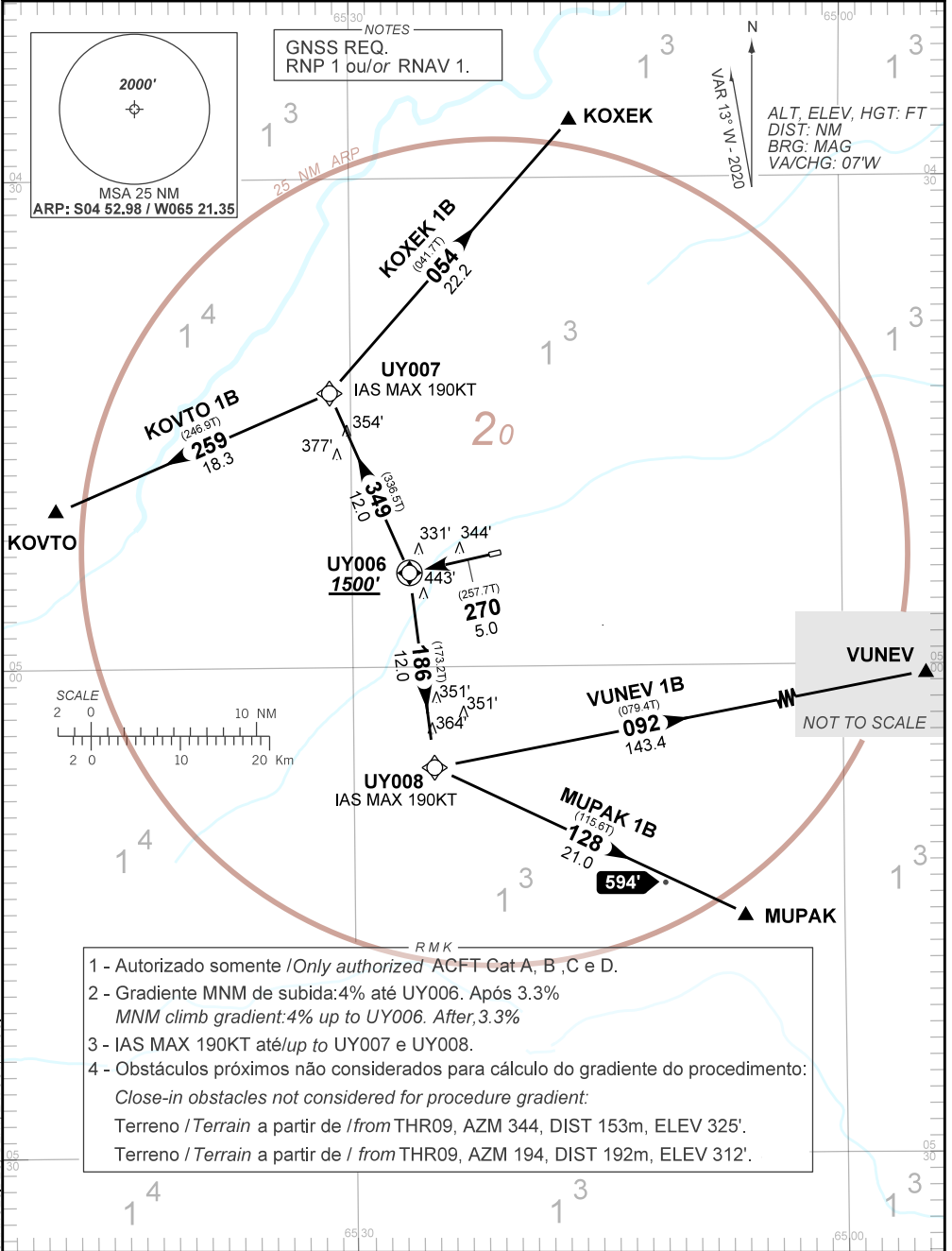


AD ELEV: 210'

**RNAV KOVTO 1B - KOXEK 1B - MUPAK 1B - VUNEV 1B**

TA 4000'	AFIS URUCU 131.85	APP NIL	ACC AMAZÔNICO 124.75 126.50 133.90 135.25 121.50
----------	----------------------	------------	---



- RMK**
- 1 - Autorizado somente /Only authorized ACFT Cat A, B, C e D.
  - 2 - Gradiente MNM de subida: 4% até UY006. Após 3.3%  
MNM climb gradient: 4% up to UY006. After, 3.3%
  - 3 - IAS MAX 190KT até/up to UY007 e UY008.
  - 4 - Obstáculos próximos não considerados para cálculo do gradiente do procedimento:  
Close-in obstacles not considered for procedure gradient:  
Terreno / Terrain a partir de / from THR09, AZM 344, DIST 153m, ELEV 325'.  
Terreno / Terrain a partir de / from THR09, AZM 194, DIST 192m, ELEV 312'.

CHANGES/DEC IDENT LAYOUT PROC