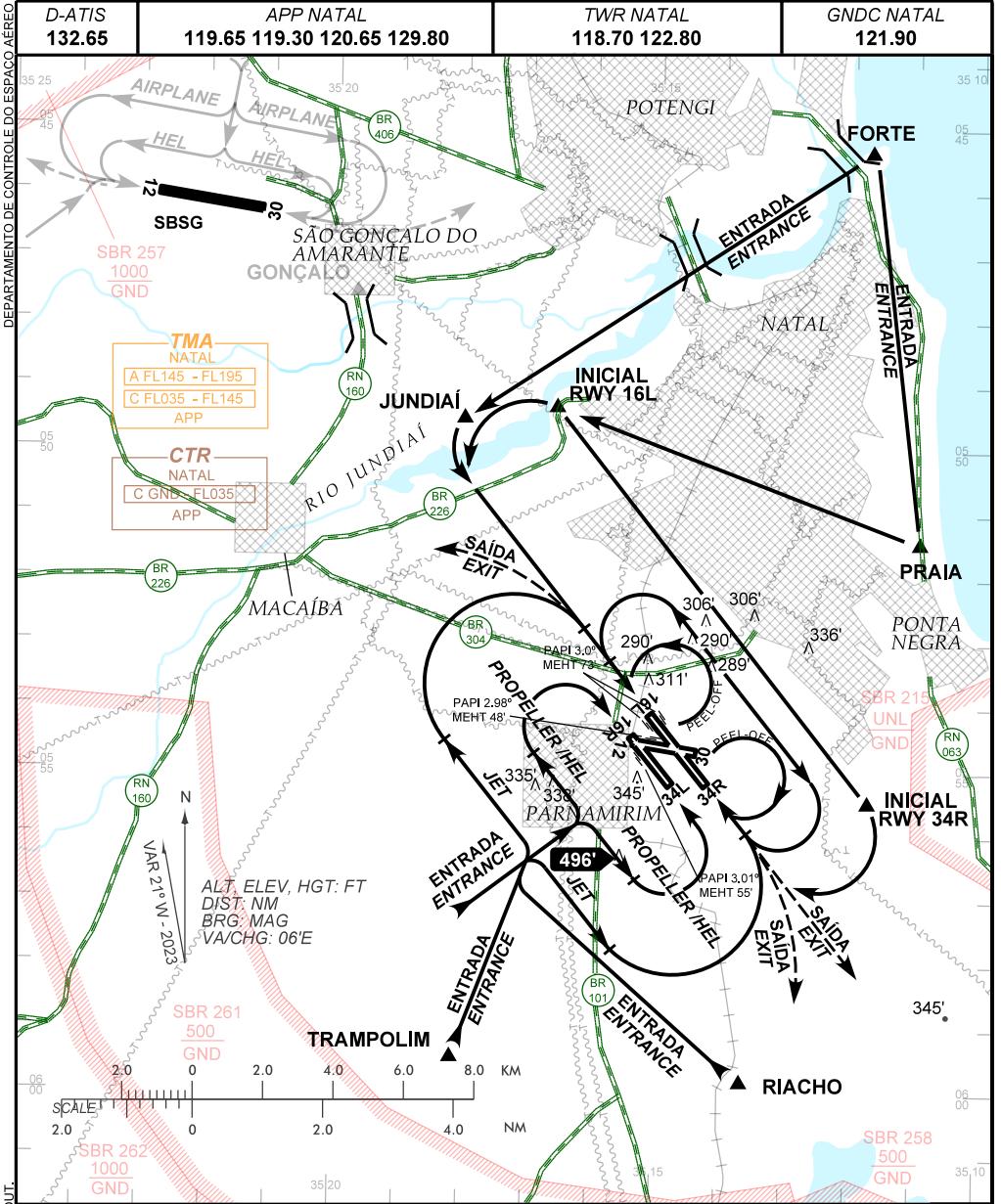


VISUAL APPROACH CHART
(VAC)

NATAL / Campo Augusto Severo, MIL (SBNT)

AD ELEV: 169'

RWY 16L/34R - 16R/34L



RMK:

- ALTITUDES MÍNIMAS NO CIRCUITO DE TRÁFEGO / MINIMUM ALTITUDES IN TRAFFIC CIRCUIT :
 - JATO / JET: 1700'
 - HÉLICE / PROPELLER: 1200'
 - HEL: 700'
- INFORMAÇÕES COMPLEMENTARES NO VERSO.
SEE REVERSE SIDE FOR ADDITIONAL INFORMATION.

— RMK —

- 3 - CKT RWY12/30 PADRÃO E SUJEITO AUTH ATC.
STANDARD TRAFFIC PATTERN TO RWY 12/30 AND SUBJECT ATC CLEARANCE.
- 4 - CKT SETOR "E" EXCLUSIVO ACFT ESQUADRÕES AÉREOS SEDIADOS EM SBNT
OU DESLOCADOS PARA ALA10 .
*SECTOR "E" CKT AVAILABLE JUST FOR AIR SQUADRON BASED IN SBNT OR
REPLACED TO ALA10.*
- 5 - PARA POUSO EM SBSG, VER VAC DESSE AERÓDROMO.
FOR LANDING IN SBSG, SEE VAC OF THIS AERODROME.
- 6 - OBSERVAR AIC SOBRE CIRCULAÇÃO AÉREA VISUAL NA TERMINAL NATAL (SBXT).
SEE AIC ABOUT VISUAL FLIGHT IN NATAL TERMINAL AREA (SBXT).