

**INSTRUMENT APPROACH CHART (IAC)**

**VITÓRIA / Eurico de Aguiar Salles, INTL (SBVT)**

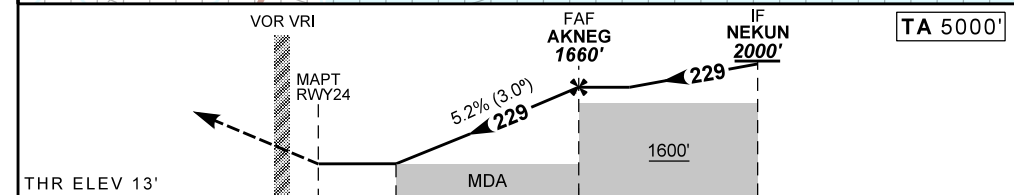
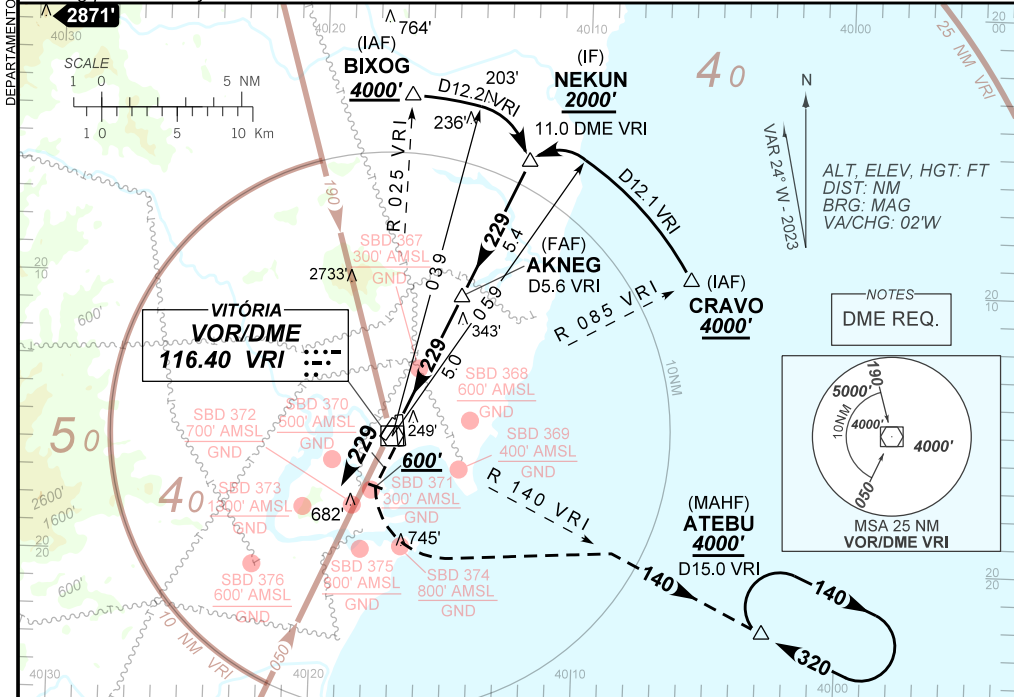
**AD ELEV: 34'**

**VOR T RWY 24**

ATIS <b>127.575</b>	APP VITÓRIA <b>119.85</b>	TWR VITÓRIA <b>118.10</b>	GNDC VITÓRIA <b>121.95</b>
VOR/DME VRI <b>116.40 MHz</b>	FINAL CRS <b>229°</b>	FAF: <b>1660'</b>	VOR MDA / (OCH): <b>740' / (730')</b>

APCH Perdida: 1) Subir para **4000'**. Manter RDL **229** do VOR VRI até **600'**, após curvar à **ESQUERDA** RDL **140** do VOR VRI até ATEBU para espera. 2) IAS MAX 210KT até interceptar RDL **140** do VOR VRI.  
Missed APCH: 1) Climb to **4000'**. Maintain **229** RDL VRI VOR until passing **600'**, after turn **LEFT 140** RDL VRI VOR to ATEBU for holding. 2) IAS MAX 210KT until intercepting **140** RDL VRI VOR.

RMK: Proibido circular pelo Setor Oeste.  
*Circling prohibited by West Sector.*



	0.0	2.1	5.0	10.4	TO THR 24 (NM)
	0.6	2.7	5.6	11.0	TO VRI (DME)

RWY24	2.1	3.0	4.0	AKNEG		Ground Speed (KT)	090	110	130	150	170	190
ALT (HGT)	740	1018	1337	1660		FPM	500	600	700	800	900	NA
				1647		FAF-MAPT	NA					

STRAIGHT-IN	CAT	A	B	C	D	E
	MDA / (OCH)	740' / (730')				
VOR	ALS / NO ALS / RVR ALS (m)	NIL / 1600 / NIL		NIL / 3400 / NIL		
CIRCLING	MDA / (OCH)	740' / (710')	980' / (950')	1350' / (1320')		NA
	VIS (m)	NIL / 1600 / NIL	NIL / 2000 / NIL	NIL / 4800 / NIL		

CHANGES: MNM OPR.

DEPARTAMENTO DE CONTROLE DO ESPAÇO AÉREO