

**INSTRUMENT APPROACH  
CHART (IAC)**

**SÃO PAULO / Congonhas (SBSP)  
RNP X RWY 35L (AR)**

**AD ELEV: 2631'**

**CAT (A, B, C)**

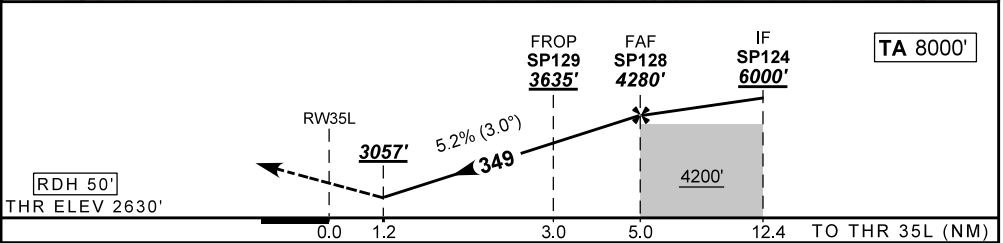
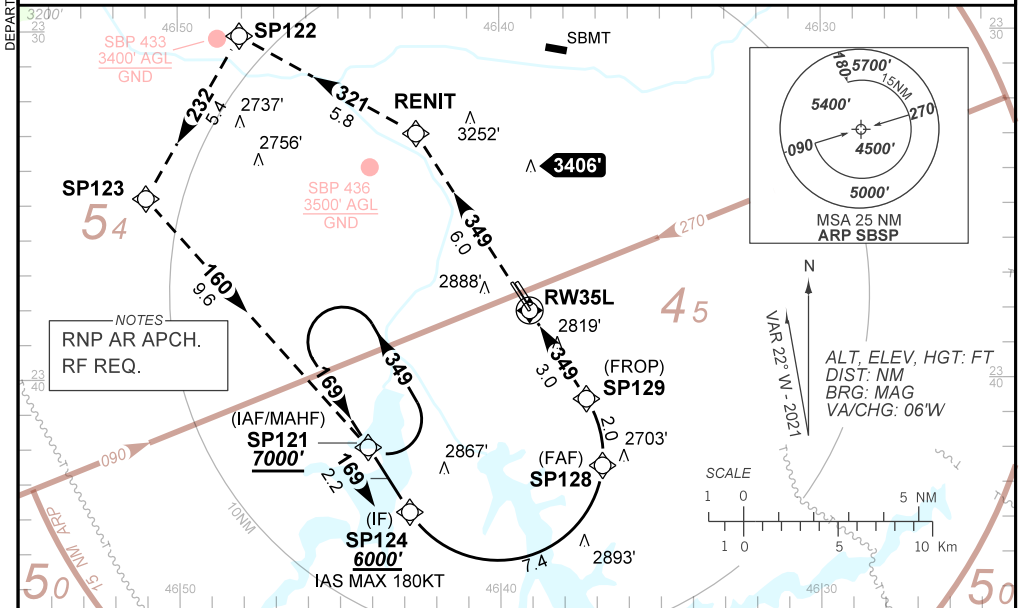
D-ATIS <b>127.65</b>	APP SÃO PAULO <b>129.75 119.15 120.45</b> <b>120.85 133.85</b>	TWR SÃO PAULO <b>118.05 127.15</b>	GNDC SÃO PAULO <b>121.90</b>
-------------------------	--	---------------------------------------	---------------------------------

TEMP LNAV/VNAV <b>MIN -10°C / MAX 46°C</b>	FINAL CRS <b>349°</b>	FAF: <b>4280'</b>	RNP 0.3 DA / (OCH): <b>3057' / (427')</b>	<b>N/A</b>
---	--------------------------	----------------------	--	------------

**APCH Perdida:** 1) Subir para **7000'** e manter rumo **349** até RENIT. Após, curvar à **ESQUERDA** no rumo **321** até SP122. Após, manter o rumo **232** até SP123. Após, manter o rumo **160** até SP121 para espera. 2) IAS MAX 170KT.

**Missed APCH:** 1) Climb to **7000'** and maintain course **349** until **RENIT**. After, turn **LEFT** course **321** until SP122. After, maintain course **232** until SP123. After, maintain course **160** until SP121 for holding. 2) IAS MAX 170KT.

**RMK: NIL.**



RWY35L	1.2	2.0	SP129	4.0	SP128		Ground Speed (KT)	90	110	130	150	170	190
ALT	3057	3318	3635	3955	4280		FPM	500	600	700	800		NA
(HGT)	427	687	1004	1324	1649		FAF-MAPT	NA					

STRAIGHT-IN	CAT	A	B	C	D	E	
	DA / (OCH)	3057' / (427')				NA	
RNP 0.3	ALS/NO ALS/ RVR ALS (m)	1300 / 2000 / NIL				NA	

**AUTORIZAÇÃO ESPECIAL PARA AERONAVE E TRIPULAÇÃO REQUERIDA**  
SPECIAL AUTHORIZATION FOR AIRCRAFT AND CREW REQUIRED

Aprovação Específica  
(ANAC IS 91.001)  
Specific Approval  
(ANAC IS 91.001)

CHANGES: NEW CHART.

DEPARTAMENTO DE CONTROLE DO ESPAÇO AÉREO