

**INSTRUMENT APPROACH  
CHART (IAC)**

**JAGUARUNA / Regional Sul (SBJA)**

**AD ELEV: 115'**

**NDB RWY 05**

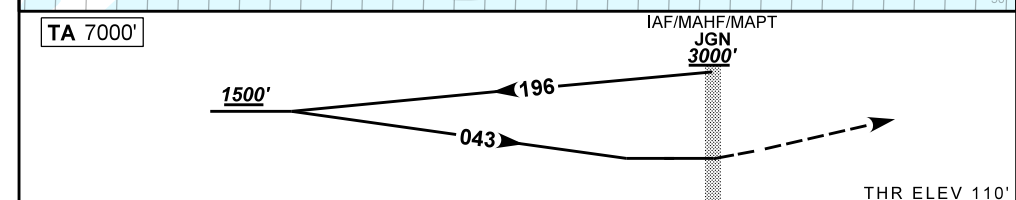
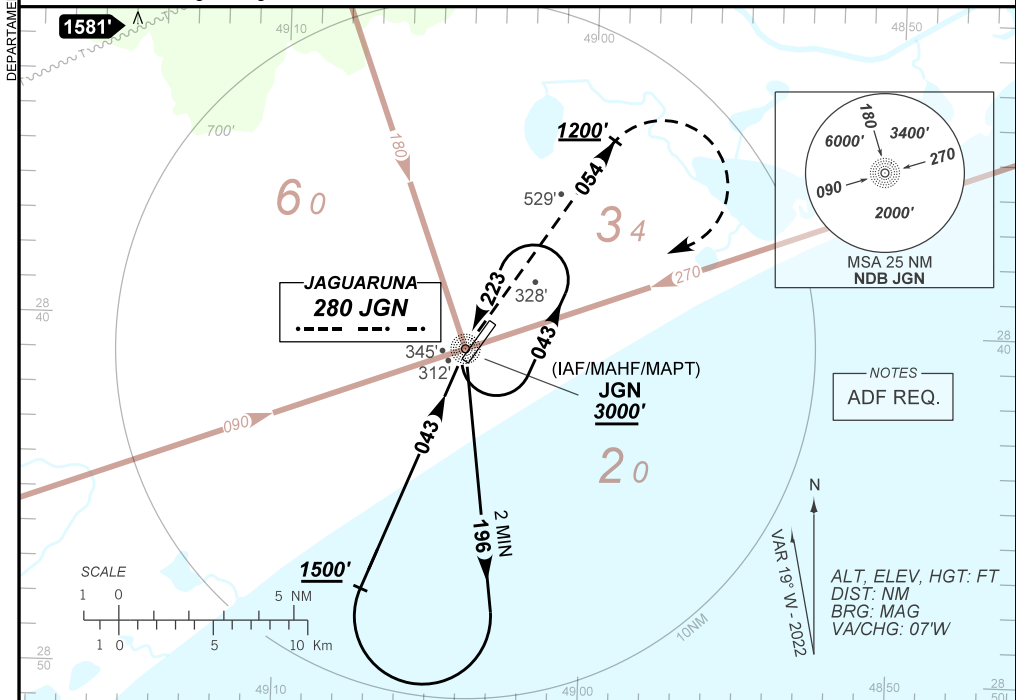
<b>ATIS</b> NIL	<b>APP</b> NIL	<b>AFIS JAGUARUNA</b> 130.70		<b>GND C</b> NIL
--------------------	-------------------	---------------------------------	--	---------------------

<b>NDB JGN</b> 280 KHz	<b>FINAL CRS</b> 043°	<b>N/A</b>	<b>N/A</b>	<b>NDB</b> MDA / (OCH): 800' / (690')
---------------------------	--------------------------	------------	------------	--

**APCH Perdida:** 1) Subir para 3000'. Manter QDR 054 JGN até 1200'. Após, curvar à DIREITA para o NDB JGN para espera. 2) IAS MAX 220 KT na curva.

**Missed APCH:** 1) Climb to 3000'. Maintain 054 QDR JGN until 1200'. After, turn RIGHT direct to JGN NDB for holding. 2) IAS MAX 220 KT on turn.

**RMK:** Proibido circular pelo setor W.  
Prohibited to circling throught W sector.



NIL	RWY05	Ground Speed (KT)	090	110	130	150	170	190
NIL	ALT	FPM	650					NA
NIL	(HGT)	FAF-MAPT	NA					NA

<b>STRAIGHT-IN</b>	<b>CAT</b>	<b>A</b>	<b>B</b>	<b>C</b>	<b>D</b>	<b>E</b>
<b>NDB</b>	<b>MDA / (OCH)</b>	<b>800' / (690')</b>				<b>NA</b>
	ALS/NO ALS/ RVR ALS (m)	NIL / 1600 / NIL		NIL / 3200 / NIL		
<b>CIRCLING</b>	<b>MDA / (OCH)</b>	<b>NA</b>				
	VIS (m)					