

INSTRUMENT APPROACH
CHART (IAC)

SÃO PAULO / Guarulhos-Gov. André Franco Montoro, INTL (SBGR)

AD ELEV: 2461'

ILS P or LOC P RWY 10R

D-ATIS 127.75	APP SÃO PAULO 129.75 119.15 120.45 120.85 133.85 134.90	TWR GUARULHOS 118.40 132.75 135.20	GNDC GUARULHOS 121.70 126.90
------------------	--	--	---------------------------------

LOC IGH 111.70 MHz	FINAL CRS 095°	FAF: 4100'	CAT I DA / (OCH): REFER TO MNM	LOC ONLY MDA / (OCH): 2980' / (530')
-----------------------	-------------------	---------------	-----------------------------------	---

APCH Perdida: Subir para **6000'**. Manter rumo **095** até **3300'**. Após, curvar à DIREITA proa **180** e aguardar instruções ATC. IAS MAX 230KT

Missed APCH: Climb to **6000'**. Maintain course **095** until **3300'**. Then, turn RIGHT heading **180** and expect ATC instructions. IAS MAX 230KT.

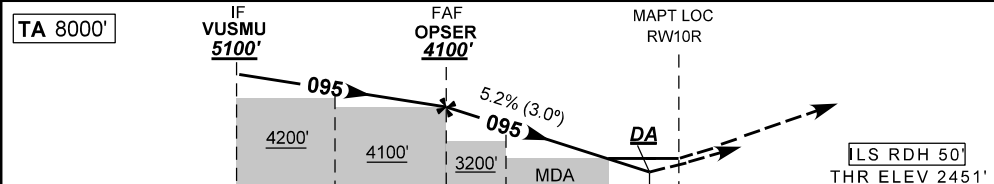
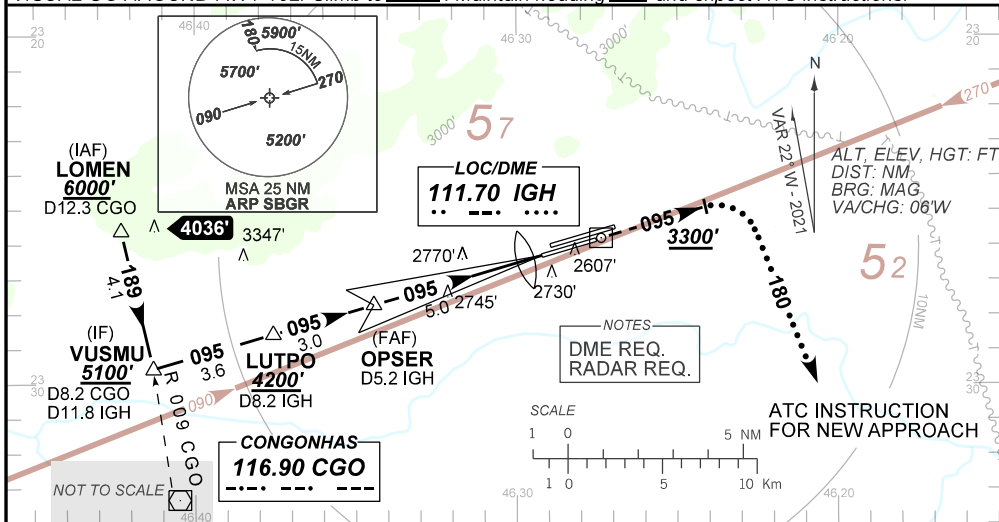
RMK: (*) RVR ALS 550m: TDZL and CL.

(*) RVR ALS 550m para aproximação utilizando Diretor de Voo, Piloto Automático ou Head-Up Display (HUD).

(*) RVR ALS 550m for approach using a Flight Director, Autopilot or Head-Up Display (HUD).

ARREMETIDA VISUAL RWY 10L: Subir para **6000'**. Manter proa **095** e aguardar instruções ATC.

VISUAL GO AROUND RWY 10L: Climb to **6000'**. Maintain heading **095** and expect ATC instructions.



TO THR 10R (NM)	11.6	8.0	5.0	2.8	1.5	0.5	0.0				
TO IGH (DME)	11.8	8.2	5.2	3.0	1.7	0.7	0.2				
OPSEK	4.0	3.0	2.8	1.5	RWY10R						
4100	3775	3456	3393	2980	ALT						
1649	1324	1005	942	530	(HGT)						
					KT	90	110	130	150	170	190
					FPM	500	600	700	800	900	1000
					FAF-MAPT	NA					

STRAIGHT-IN	CAT	A	B	C	D	E
	DA / (OCH)	2651' / (200')				2691' / (240')
CAT I	ALS/NO ALS/ RVR ALS (m)	800 / 1200 / 700(*)				
	MDA / (OCH)	2980' / (530')				
LOC	ALS/NO ALS/ RVR ALS (m)	800 / 1600 / NIL		1700 / 2400 / NIL		
	MDA / (OCH)	NA				
CIRCLING	MDA / (OCH)	NA				
	VIS (m)	NA				

DEPARTAMENTO DE CONTROLE DO ESPAÇO AEREO

CHANGES: THR