

STANDARD DEPARTURE CHART
INSTRUMENT (SID)

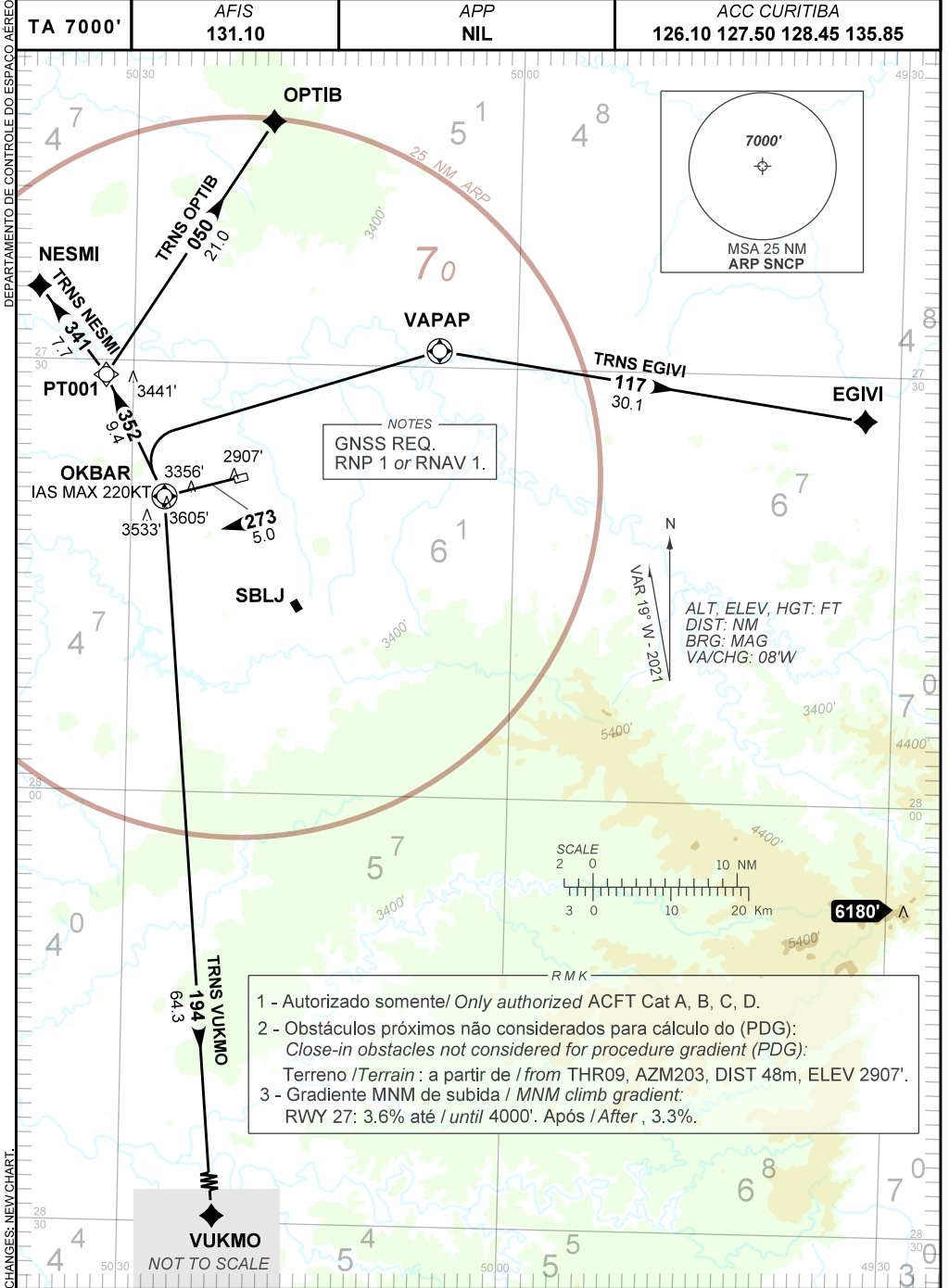
CORREIA PINTO / Aeroporto Regional do Planalto Serrano (SNCP)

RWY 27

RNAV OKBAR 1A

AD ELEV: 2887'

TA 7000'	AFIS 131.10	APP NIL	ACC CURITIBA 126.10 127.50 128.45 135.85
----------	-------------	---------	---



- 1 - Autorizado somente / Only authorized ACFT Cat A, B, C, D.
- 2 - Obstáculos próximos não considerados para cálculo do (PDG):
Close-in obstacles not considered for procedure gradient (PDG):
Terreno / Terrain : a partir de / from THR09, AZM203, DIST 48m, ELEV 2907'.
- 3 - Gradiente MNM de subida / MNM climb gradient:
RWY 27: 3.6% até / until 4000'. Após / After , 3.3%.

CHANGES: NEW CHART.