

STANDARD DEPARTURE CHART SÃO PEDRO DA ALDEIA/Tenente Jorge Henrique Möller, MIL (SBES)  
INSTRUMENT (SID)

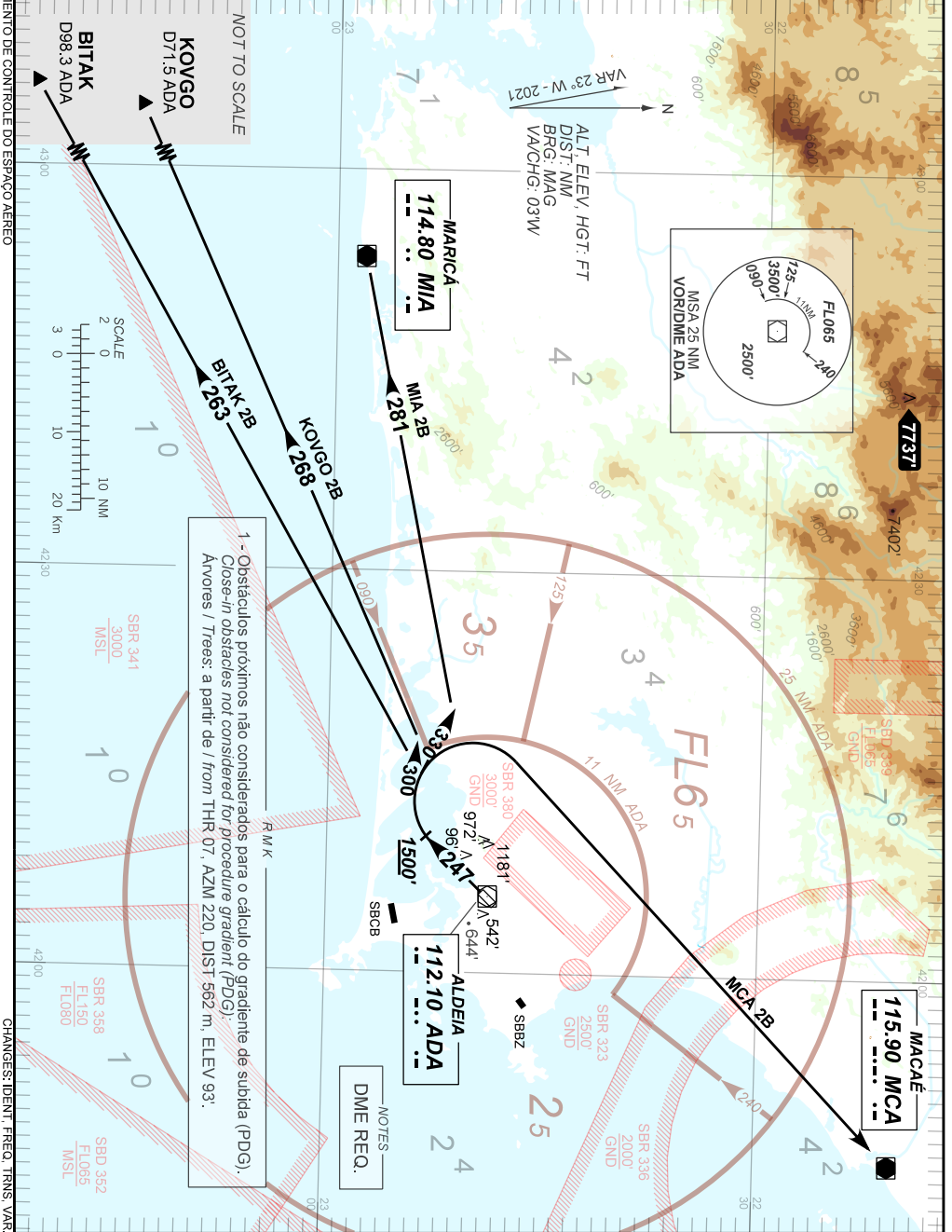
RWY 25

AD ELEV: 61'

BITAK 2B - KOVGO 2B - MCA 2B - MIA 2B

TA 5000'	TWR ALDEIA 118.30 122.80 (MIL)	APP ALDEIA 119.45 120.30	APP RIO 119.00 119.35 126.20 133.30	APP MACAÉ 119.20 120.00 129.30	ACC CURITIBA 133.40 133.60
----------	-----------------------------------	-----------------------------	---	--------------------------------------	-------------------------------

DEPARTAMENTO DE CONTROLE DO ESPAÇO AEREO



1 - Obstáculos próximos não considerados para o cálculo do gradiente de subida (PDG).  
Close-in obstacles not considered for procedure gradient (PDG).  
Ávores / Trees: a partir de / from THR 07, AZM 220, DIST 562 m, ELEV 93'.

NOTES  
DME REQ.

CHANGES: IDENT, FREQ, TRNS, VAR.

AMDT 2105A1 20 MAY 21

SBES\_SID\_00R 1/1  
SID BITAK 2B - KOVGO 2B - MCA 2B - MIA 2B RWY 25