

**INSTRUMENT APPROACH
CHART (IAC)**

CURITIBA / Bacacheri (SBB)

AD ELEV: 3059'

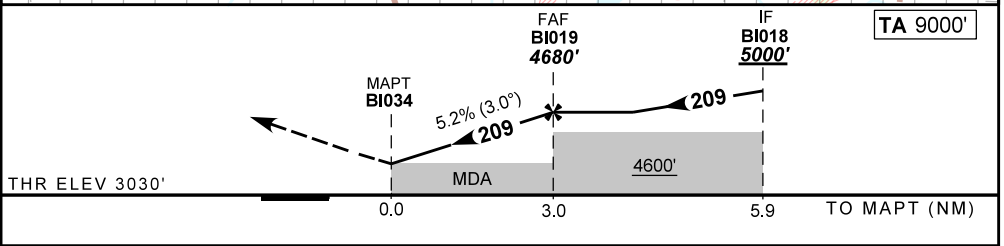
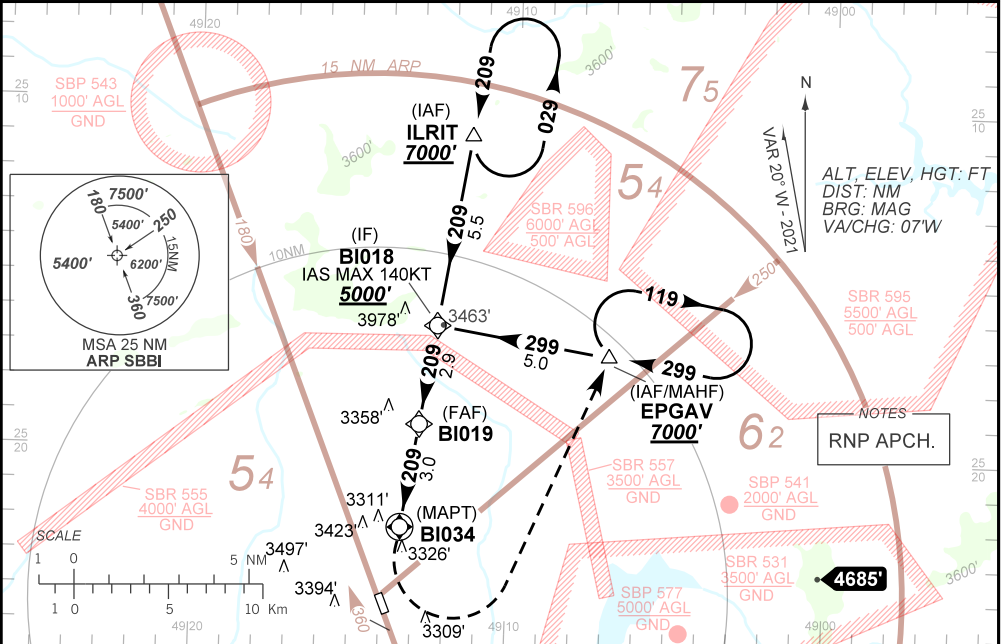
RNP B RWY 36

DEPARTAMENTO DE CONTROLE DO ESPAÇO AÉREO

| | | | | | |
|------------------------|--|----------------------|------------|--------------------------------|---------------------------------|
| ATIS 132.325 | APP CURITIBA 119.95 119.70 120.65 120.95 129.55 133.15 | | | TWR BACACHERI 118.90 | GNDC BACACHERI 121.80 |
| N/A | FINAL CRS 209° | FAF: 4680' | N/A | N/A | |

APCH Perdida: Subir para **7000'**. Curve à **ESQUERDA** direto EPGAV para espera.
Missed APCH: Climb to **7000'**. Turn **LEFT** direct EPGAV for holding.

RMK: 1) Proibido circular setor Oeste do AD entre os AZM 191 e 333. 2) Procedimento para circular RWY36: Circular pelo SECT E do AD interceptando a final com curva pela direita. 3) Proibido circular para RWY18.
1) Prohibited to circle W sector from AD between AZM 191 and 333. 2) Procedure to circle RWY36: Circle E sector from AD to intercept final with right turn. 3) Prohibited to circle to RWY18.



| | | | | | | | | | |
|-------------------|------|------|-------|------|-----|-----|--|--|--|
| MAPT BI034 | 1.0 | 2.0 | BI019 | | | | | | |
| ALT | 3720 | 4035 | 4354 | 4680 | | | | | |
| (HGT) | 670 | 1005 | 1324 | 1650 | | | | | |
| Ground Speed (KT) | 090 | 110 | 130 | 150 | 170 | 190 | | | |
| FPM | 500 | 600 | 700 | NA | | | | | |
| FAF-MAPT | NIL | | | | | | | | |

| | | | | | | |
|-------------|-------------------------|----------------|---|---|----|---|
| STRAIGHT-IN | CAT | A | B | C | D | E |
| | MDA / (OCH) | NA | | | | |
| LNAV | ALS/NO ALS/ RVR ALS (m) | NA | | | | |
| | | | | | | |
| CIRCLING | MDA / (OCH) | 3720' / (670') | | | NA | |
| | VIS (m) | 3700 | | | | |

CHANGES: EAC. IDENT. LAYOUT. VAR.