

**INSTRUMENT APPROACH
CHART (IAC)**

BRASÍLIA / Pres. Juscelino Kubitschek, INTL (SBBR)

AD ELEV: 3498'

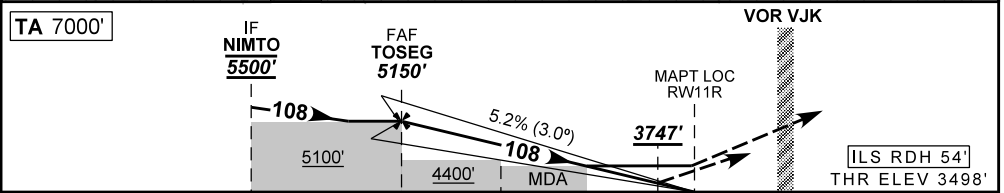
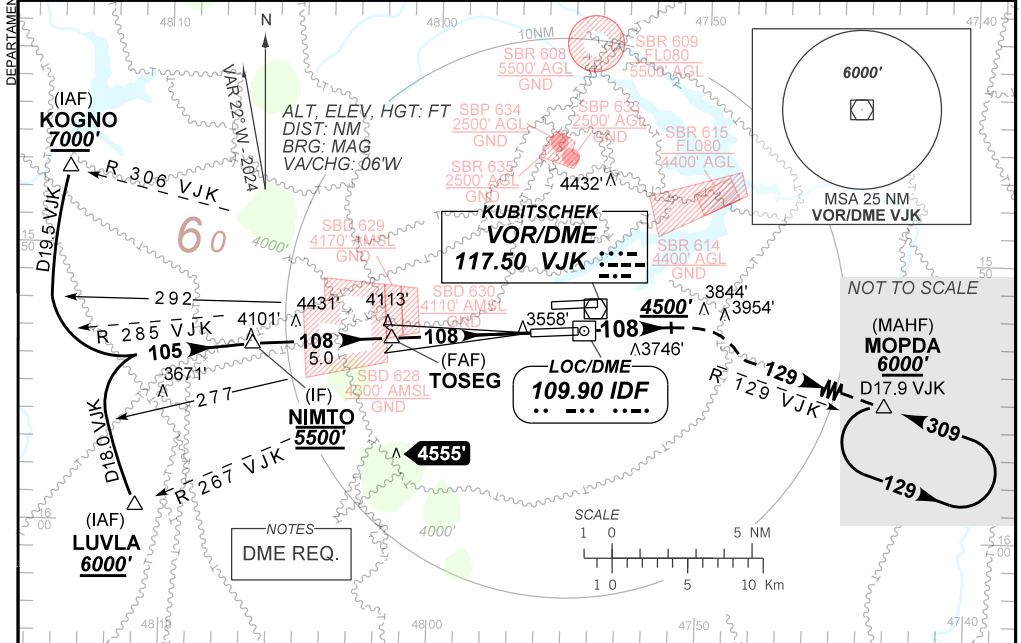
ILS X or LOC X RWY 11R

D-ATIS 127.80	APP BRASÍLIA 120.65 129.15 129.60 119.50	TWR BRASÍLIA 118.10 118.45 118.75	GNDC BRASÍLIA 121.80 121.95
LOC IDF 109.90 MHz	FINAL CRS 108°	FAF: 5150'	CAT I DA / (OCH): 3747' / (250')
		LOC MDA / (OCH): 3880' / (390')	

APCH Perdida: Subir para **6000'**. Manter proa **108** até **4500'**. Após, curvar à DIREITA para interceptar RDL **129** do VOR VJK até MOPDA para espera.

Missed APCH: Climb to **6000'**. Maintain heading **108** until **4500'**. After, turn RIGHT to intercept **129** RDL VJK VOR to MOPDA for holding.

RMK: (*)VIS RVR ALS 550m para APCH utilizando Diretor de Voo, Piloto Automático ou Head-Up Display(HUD).
(*)VIS RVR ALS 550m for APCH using a Flight Director, Autopilot or Head-Up Display (HUD).



TO THR 11R (NM)	10.0	5.0	2.7	1.0	0.6	0.0
TO IDF (DME)	11.9	6.9	4.6	2.9	2.5	1.9

	TOSEG	4.0	3.0	2.0	1.0	RWY 11R	Ground Speed (KT)	090	110	130	150	170	190
		5150	4826	4507	4189	3880	FPM	500	600	700	800	900	1000
		1652	1328	1009	691	390	FAF-MAPT	NA					

STRAIGHT-IN	CAT	A	B	C	D	E
	DA / (OCH)	3747' / (250')				
CAT I	ALS/NO ALS/ RVR ALS (m)	800 / 1300 / 700(*)				
	MDA / (OCH)	3880' / (390')				
LOC	ALS/NO ALS/ RVR ALS (m)	800 / 1600 / NIL			1100 / 1800 / NIL	
	MDA / (OCH)	NA				
CIRCLING	VIS (m)	NA				

CHANGES: LAYOUT, OBST, PROC, VAR.