

**INSTRUMENT APPROACH  
CHART (IAC)**

**SOROCABA / Sorocaba (SDCO)**

**RNP Y RWY 19**

(CAT A,B,C)

**AD ELEV: 2083'**

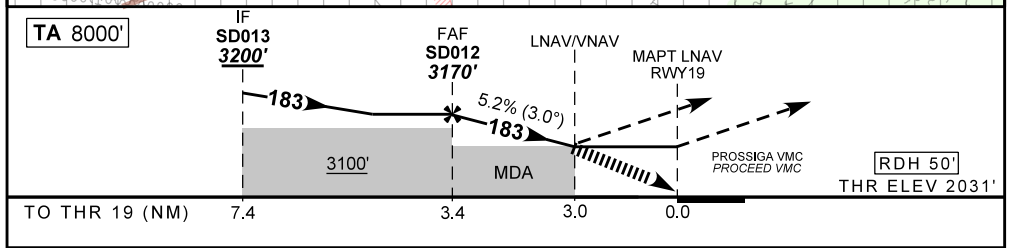
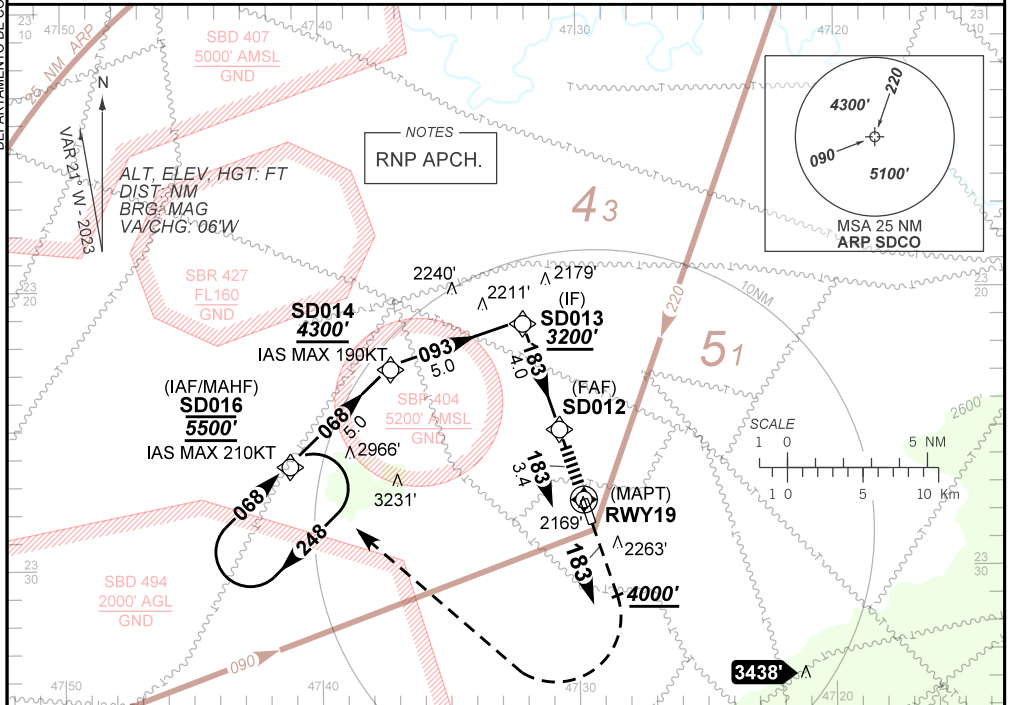
ATIS <b>127.775</b>	APP SÃO PAULO <b>129.50 119.25 119.80</b>	AFIS SOROCABA <b>118.80</b>	TWR SOROCABA <b>118.80</b>	GNDC SOROCABA <b>121.80</b>
------------------------	--	--------------------------------	-------------------------------	--------------------------------

TEMP LNAV/VNAV <b>MIN -10°C / MAX 50°C</b>	FINAL CRS <b>183°</b>	FAF: <b>3170'</b>	LNAV/VNAV DA / (OCH): <b>3031' / (1000')</b>	LNAV MDA / (OCH): <b>3040' / (1010')</b>
---	--------------------------	----------------------	---	---

APCH Perdida: Subir para **5500'**. Manter rumo **183** até **4000'**. Após, curvar à DIREITA direto SD016 para espera.

Missed APCH: Climb to **5500'**. Maintain course **183** until **4000'**. After, turn RIGHT direct SD016 for holding.

DEPARTAMENTO DE CONTROLE DO ESPAÇO AÉREO



		SD012	3.0	RWY19	Ground Speed (KT)	090	110	130	150	170	190
		3170	3040	ALT	FPM	500	600	700	800	NA	
		1139	1000	(HGT)	FAF-MAPT	NIL					

STRAIGHT-IN	CAT	A	B	C	D	E
	DA / (OCH)	3031' / (1000')				
LNAV/VNAV	ALS/NO ALS/ RVR ALS (m)	NIL / 5000 / NIL			NA	
	MDA / (OCH)	3040' / (1010')				
LNAV	ALS/NO ALS/ RVR ALS (m)	NIL / 5000 / NIL				
	MDA / (OCH)				NA	
CIRCLING	MDA / (OCH)				NA	
	VIS (m)				NA	

CHANGES: ALT, EAC, LAYOUT.

AIRAC AMDT 2413A1 26 DEC 24

SDCO\_IAC\_00E 1/1  
IAC RNP Y RWY 19