

**INSTRUMENT APPROACH
CHART (IAC)**

SÃO PAULO / Guarulhos-Gov. André Franco Montoro, INTL (SBGR)

AD ELEV: 2461'

ILS P or LOC P RWY 09R

D-ATIS 127.75	APP SÃO PAULO 129.75 119.15 120.45 120.85 133.85 134.90	TWR GUARULHOS 118.40 132.75 135.20	GNDC GUARULHOS 121.70 126.90
-------------------------	---	--	--

LOC IGH 111.70 MHz	FINAL CRS 095°	FAF: 4100'	CAT I DA / (OCH): REFER TO MNM	LOC ONLY MDA / (OCH): 2980' / (530')
------------------------------	--------------------------	----------------------	--	--

APCH Perdida: Subir para **6000'**. Manter rumo **095** até **3300'**. Após, curvar à DIREITA proa **180** e aguardar instruções ATC. IAS MAX 230KT

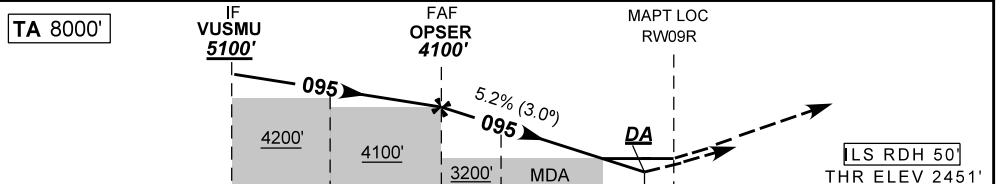
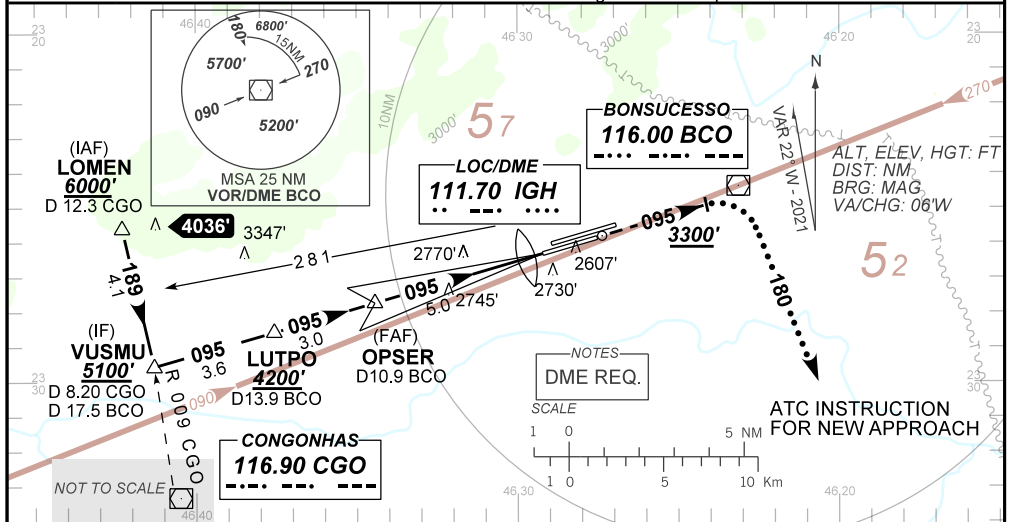
Missed APCH: Climb to **6000'**. Maintain course **095** until **3300'**. Then, turn RIGHT heading **180** and expect ATC instructions. IAS MAX 230KT.

RMK:RADAR REQUERIDO.RADAR REQUIRED. (*) RVR ALS 550m: TDZL and CL.

(*) RVR ALS 550m para aproximação utilizando Diretor de Voo, Piloto Automático ou Head-Up Display (HUD).
(*) RVR ALS 550m for approach using a Flight Director, Autopilot or Head-Up Display (HUD).

ARREMETIDA VISUAL RWY 09L: Subir para **6000'**. Manter proa **095** e aguardar instruções ATC.

VISUAL GO AROUND RWY 09L: Climb to **6000'**. Maintain heading **095** and expect ATC instructions.



TO THR 09R (NM)	11.6	8.0	5.0	2.8	1.5	0.5	0.0
TO IGH (DME)	11.8	8.2	5.2	3.8	1.7	0.7	0.2

OPSER	4.0	3.0	2.0	0.5	RWY09R	KT	90	110	130	150	170	190
4100	3775	3457	3143	2651	ALT	FPM	500	600	700	800	900	1000
1649	1324	1006	692	200	(HGT)	FAF-MAPT	NA					

STRAIGHT-IN	CAT	A	B	C	D	E
CAT I	DA / (OCH)	2651' / (200')				2691' / (240')
	ALS/NO ALS/ RVR ALS (m)	800 / 1200 / 700(*)				
LOC	MDA / (OCH)	2980' / (530')				
	ALS/NO ALS/ RVR ALS (m)	800 / 1600 / NIL		1700 / 2400 / NIL		
CIRCLING	MDA / (OCH)	NA				
	VIS (m)	NA				

DEPARTAMENTO DE CONTROLE DO ESPAÇO AÉREO

CHANGES: NEW CHART.