

INSTRUMENT APPROACH CHART (IAC)

SÃO PAULO / Guarulhos - Gov. André Franco Montoro, INTL (SBGR)

VOR Z RWY 09R

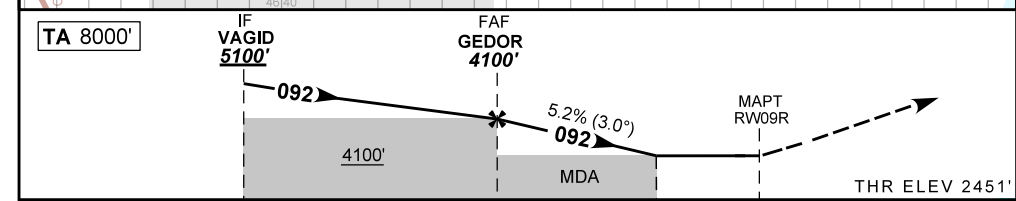
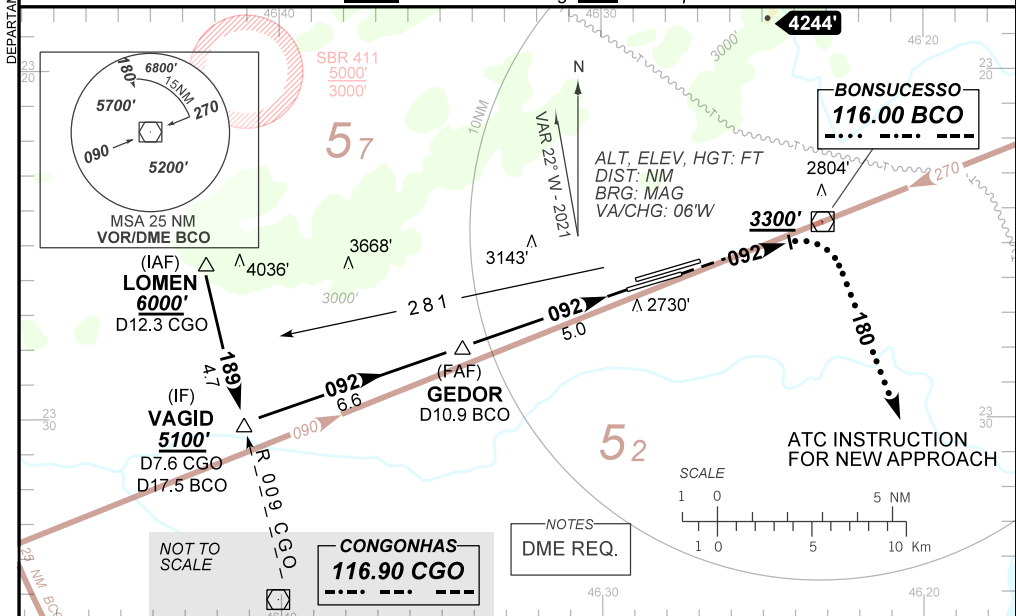
AD ELEV: 2461'

D-ATIS 127.75	APP SÃO PAULO 129.75 119.15 120.45 120.85 133.85	TWR GUARULHOS 118.40 132.75 135.20	GNDC GUARULHOS 121.70 126.90
VOR BCO 116.00 MHz	FINAL CRS 092°	FAF: 4100'	VOR/DME MDA / (OCH): 3180' / (730')

APCH Perdida: 1) Subir para **6000'**. Manter rumo **092** até passar **3300'**. Após, curvar à DIREITA, proa **180** e aguardar instrução ATC. 2) IAS MAX 230KT.

Missed APCH: 1) Climb to **6000'**. Maintain course **092** until passing **3300'**. Then, turn RIGHT heading **180** and expect ATC instructions. 2) IAS MAX 230KT.

RMK: 1) RADAR REQUERIDO. RADAR REQUIRED.
2) ARREMETIDA VISUAL 09L: Subir para **6000'**. Manter proa **095** e aguardar instruções ATC.
VISUAL GO AROUND 09L: Climb to **6000'**. Maintain heading **095** and expect ATC instructions.



TO THR 09R (NM)	11.6	5.0	2.1	0.0
TO BCO (DME)	17.5	10.9	8.0	5.9

	GEDOR	4.0	3.0	2.1	RW09R	Ground Speed (KT)	090	110	130	150	170	190
	4100	3775	3457	3180	ALT	FPM	500	600	700	800	900	NA
	1649	1324	1006	730	(HGT)	FAF-MAPT	NA					

STRAIGHT-IN	CAT	A	B	C	D	E
	MDA / (OCH)	3180' / (730')				
VOR/DME	ALS/NO ALS/ RVR ALS (m)	800 / 1600 / NIL			2700 / 3400 / NIL	
VOR		NA				
CIRCLING	MDA / (OCH)	NA				
	VIS (m)	NA				

CHANGES: DEC. IDENT. PROC.

DEPARTAMENTO DE CONTROLE DO ESPAÇO AÉREO