

**INSTRUMENT APPROACH
CHART (IAC)**

PONTA PORÃ / Ponta Porã, INTL (SBPP)

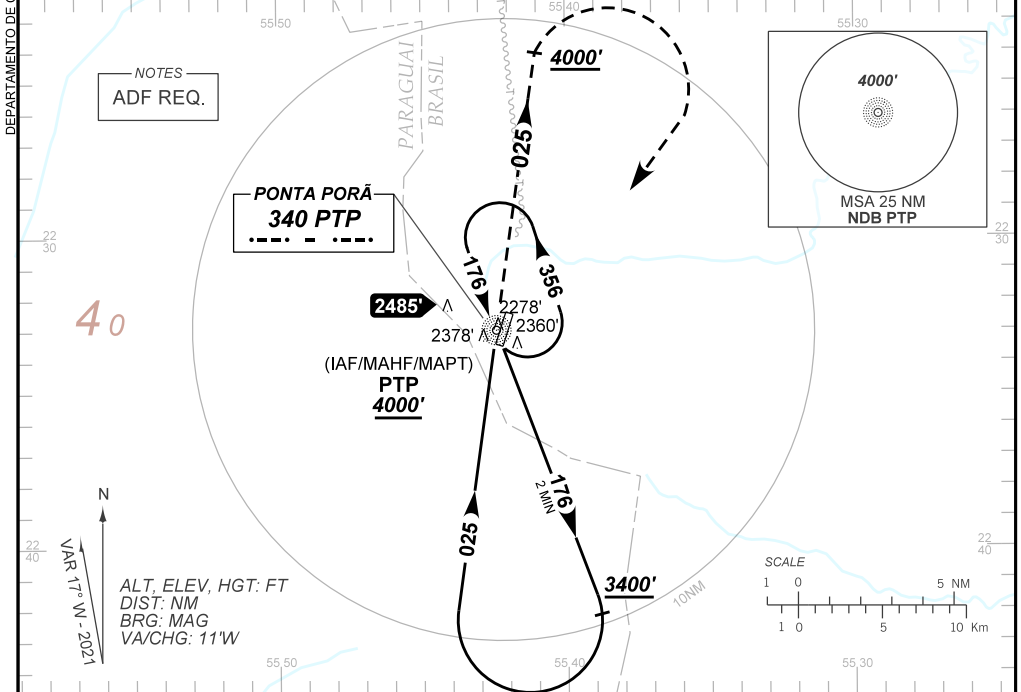
AD ELEV: 2156'

NDB RWY 04

ATIS NIL	APP NIL	AFIS PONTA PORÃ 125.90	GNDC NIL
NDB PTP 340 KHz	FINAL CRS 025°	N/A	NDB MDA / (OCH): 2680' / (540')

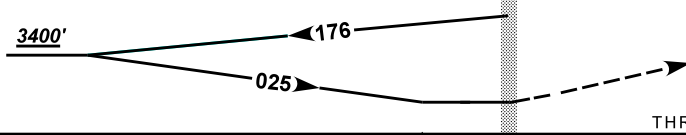
APCH Perdida: Subir para **4000'**. Manter QDR **025** do NDB PTP até cruzar **4000'**. Após, curvar à DIREITA direto NDB PTP para espera.

Missed APCH: Climb to **4000'**. Maintain **025** QDR PTP NDB until passing **4000'**. After, turn RIGHT direct to PTP NDB for holding.



TA 4000'

IAF/MAHF/MAPT
PTP
4000'



THR ELEV 2145'

NIL	RWY04	Ground Speed (KT)	090	110	130	150	170	190
NIL	ALT	FPM	650					
NIL	(HGT)	FAF-MAPT	NA					

STRAIGHT-IN	CAT	A	B	C	D	E
NDB	MDA / (OCH)	2680' / (540')				
	ALS/NO ALS/ RVR ALS (m)	NIL / 1600 / NIL		NIL / 2400 / NIL		
CIRCLING	MDA / (OCH)	NA				
	VIS (m)	NA				

CHANGES: LAYOUT, PROC. VAR. VIS.