

**INSTRUMENT APPROACH  
CHART (IAC)**

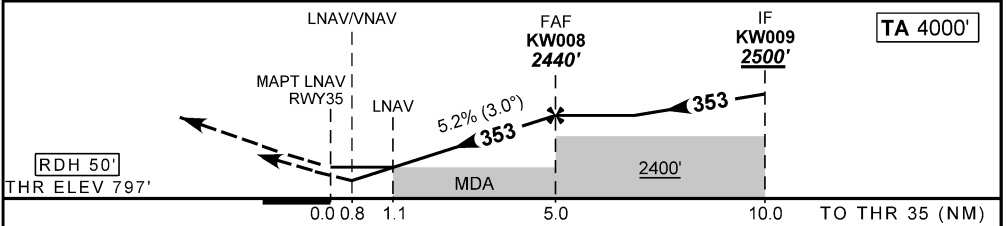
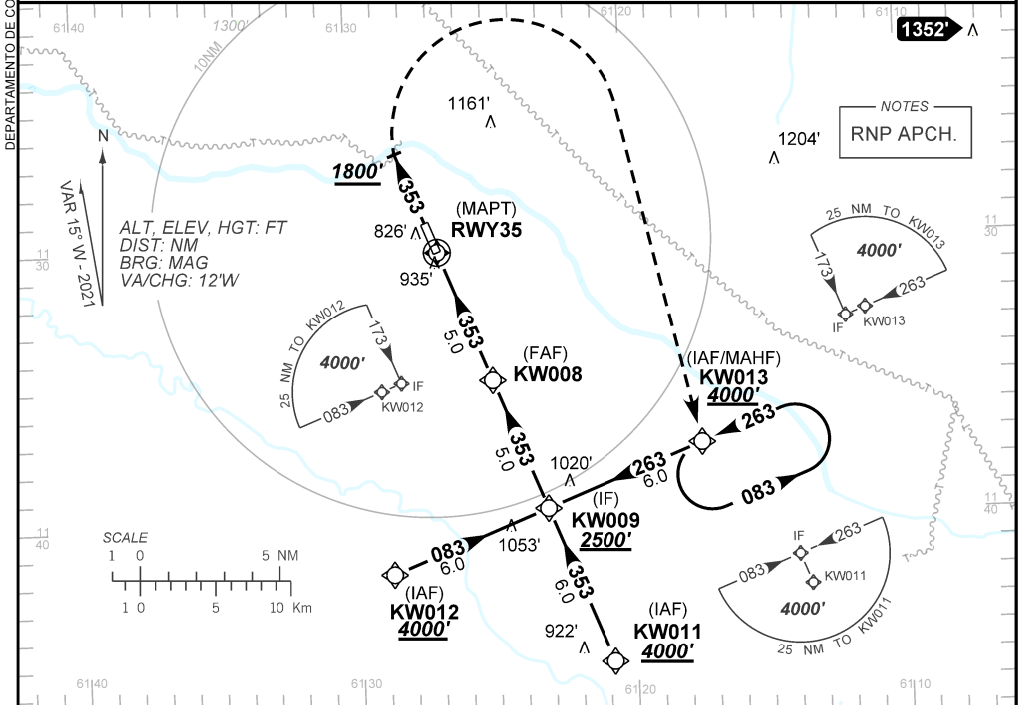
**CACOAL / Cacoal (SSKW)**

**AD ELEV: 817'**

**RNP RWY 35**

ATIS NIL	APP NIL	AFIS CACOAL 131.10	GNDC NIL
TEMP LNAV/VNAV <b>MIN -10°C / MAX 50°C</b>	FINAL CRS <b>353°</b>	FAF: <b>2440'</b>	LNAV/VNAV DA / (OCH): <b>1096' / (299')</b>
		LNAV MDA / (OCH): <b>1190' / (400')</b>	

APCH Perdida: Subir para **4000'**. Manter rumo **353** até **1800'**. Após, curvar à DIREITA direto KW013 para espera.  
Missed APCH: Climb to **4000'**. Maintain course **353** until **1800'**. After, turn RIGHT direct to KW013 for holding.



RWY35	1.1	2.0	3.0	4.0	KW008		Ground Speed (KT)	090	110	130	150	170	190
ALT	1190	1484	1802	2121	2440		FPM	500	600	700	800	900	NA
(HGT)	400	687	1005	1324	1643		FAF-MAPT	NIL					

STRAIGHT-IN	CAT	A	B	C	D	E
	DA / (OCH)	1096' / (299')				NA
LNAV/VNAV	ALS/NO ALS/ RVR ALS (m)	NIL / 1400 / NIL				
	MDA / (OCH)	NIL / 1600 / NIL		NIL / 1800 / NIL		
LNAV	ALS/NO ALS/ RVR ALS (m)					
	MDA / (OCH)					
CIRCLING	MDA / (OCH)	NA				
	VIS (m)					

CHANGES: AD ELEV. RWY.