

INSTRUMENT APPROACH  
CHART (IAC)

GUAJARÁ-MIRIM / Guajar-Mirim (SBGM)

AD ELEV: 479'

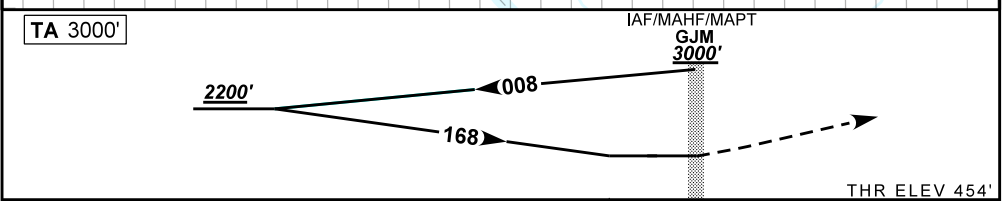
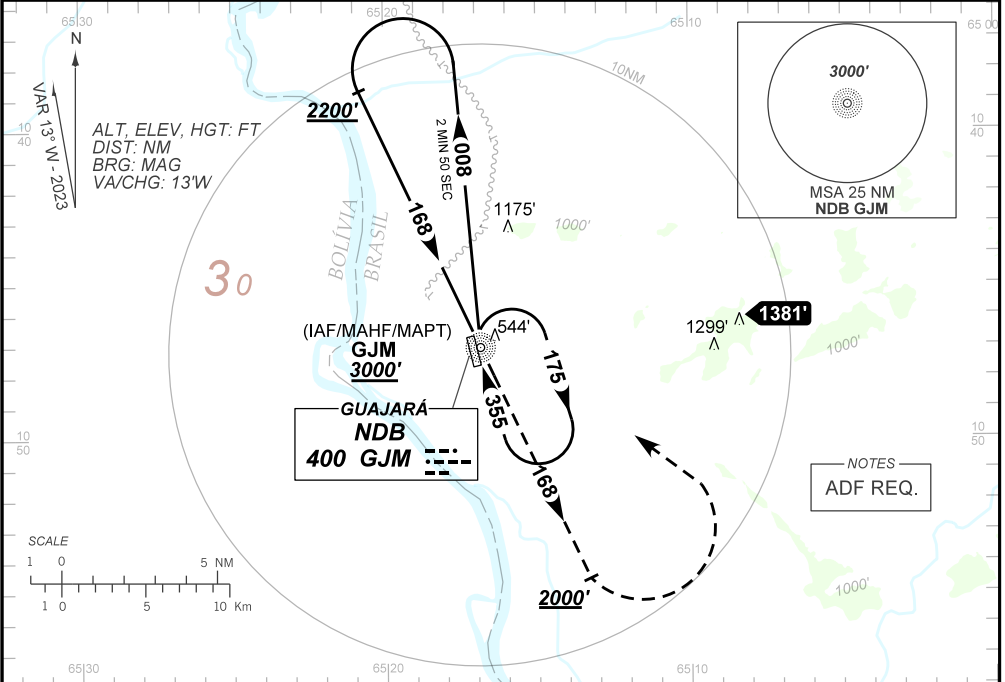
NDB RWY 17

ATIS NIL	APP NIL	AFIS GUAJAR-MIRIM 125.90	GNDC NIL
NDB GJM 400 KHz	FINAL CRS 168°	N/A	NDB MDA / (OCH): 1040' / (590')

APCH Perdida: Subir para 3000'. Manter QDR 168 do NDB GJM at 2000'. Aps, curvar  ESQUERDA direto NDB GJM para espera.

Missed APCH: Climb to 3000'. Maintain QDR 168 GJM NDB until 2000'. After, turn LEFT direct GJM NDB for holding.

DEPARTAMENTO DE CONTROLE DO ESPAO AREO



NIL	RWY 17	Ground Speed (KT)	090	110	130	150	170	190
NIL	ALT	FPM	650					NA
NIL	(HGT)	FAF-MAPT	NA					

STRAIGHT-IN	CAT	A	B	C	D	E
NDB	MDA / (OCH)	1040' / (590')				NA
	ALS/NO ALS/ RVR ALS (m)	NIL / 1600 / NIL		NIL / 2700 / NIL		
CIRCLING	MDA / (OCH)	NA				
	VIS (m)	NA				

CHANGES: HDG. VAR.