

INSTRUMENT APPROACH
CHART (IAC)

SÃO PAULO / Guarulhos - Gov. André Franco Montoro, INTL (SBGR)

ILS Z or LOC Z RWY 28L

AD ELEV: 2461'

D-ATIS 127.75	APP SÃO PAULO 119.15 120.85 122.75 123.25 129.00 129.75	TWR GUARULHOS 118.40 132.75 135.20	GNDC GUARULHOS 121.70 126.90
------------------	---	--	---------------------------------

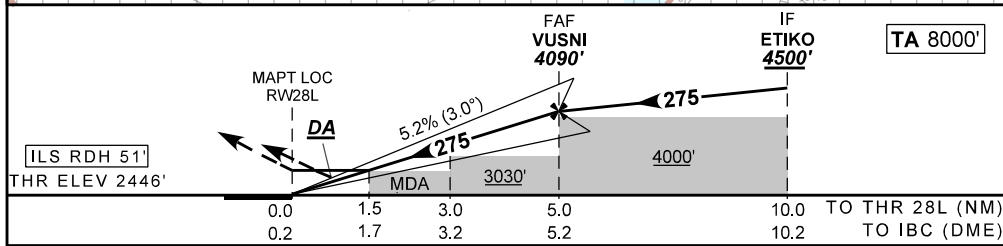
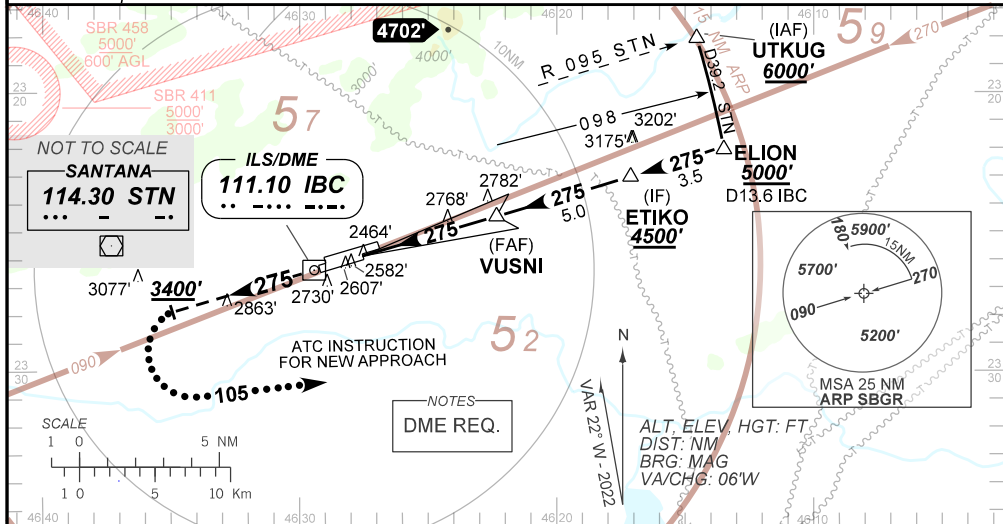
LOC IBC 111.10 MHz	FINAL CRS 275°	FAF: 4090'	CAT I DA / (OCH): REFER TO MNM	LOC Only MDA / (OCH): 2980' / (540')
-----------------------	-------------------	---------------	-----------------------------------	---

APCH Perdida: 1) Subir para **6000'**. Manter proa **275** até passar **3400'**. Após, curvar à ESQUERDA na proa **105** e aguardar instruções ATC. 2) IAS MAX 230KT.

Missed APCH: 1) Climb to **6000'**. Maintain heading **275** until passing **3400'**. After, turn LEFT heading **105** and expect ATC instructions. 2) IAS MAX 230KT.

RMK:1)(*)VIS RVR ALS 550m para APCH utilizando Diretor de Voo, Piloto Automático ou HUD; 2) RADAR REQ.
(*) VIS RVR ALS 550m for APCH using a Flight Director, Autopilot or HUD. 2) RADAR REQ.

ARREMETIDA VISUAL RWY 28R: Subir para **6000'**. Manter proa **275** até **6000'**. Após, curvar à DIREITA na proa **085** e aguardar instruções ATC.
VISUAL GO AROUND RWY 28R. Climb to **6000'**. Maintain heading **275** until **6000'**. Then, turn RIGHT heading **085** and expect ATC instructions.



RWY28L	1.5	2.0	3.0	4.0	VUSNI	Ground Speed (KT)	090	110	130	150	170	190
ALT	2980	3134	3450	3771	4090	FPM	500	600	700	800	900	NA
(HGT)	540	688	1004	1325	1644	FAF-MAPT	NA					

STRAIGHT-IN	CAT	A	B	C	D	E
	DA / (OCH)	2646' / (200')				2761' / (315')
CAT I	ALS/NO ALS/ RVR ALS (m)	800 / 1200 / 700*				800 / 1400 / 700
	MDA / (OCH)	2980' / (540')				
LOC	ALS/NO ALS/ RVR ALS (m)	800 / 1600 / 700			1700 / 2400 / 1550	
	MDA / (OCH)	NA				
CIRCLING	MDA / (OCH)	NA				
	VIS (m)	NA				

AIRAC AMDT 2209A1 08 SEP 22

SBGR_IAC_05F/1/1
IAC ILS Z or LOC Z RWY 28L

DEPARTAMENTO DE CONTROLE DO ESPAÇO AEREO

CHANGES: THR: