

INSTRUMENT APPROACH
CHART (IAC)

BAURU / Bauru (SBBU)

NDB RWY 14
(CAT A, B)

AD ELEV: 2025'

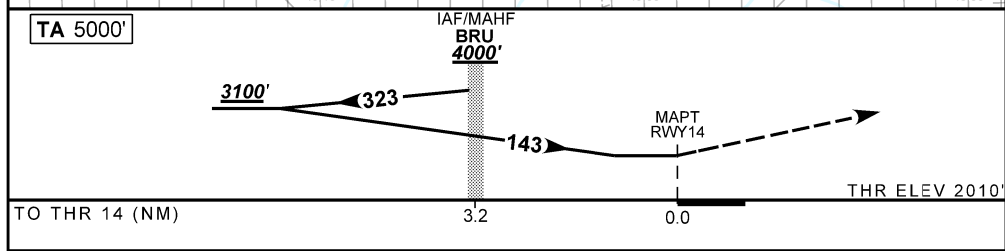
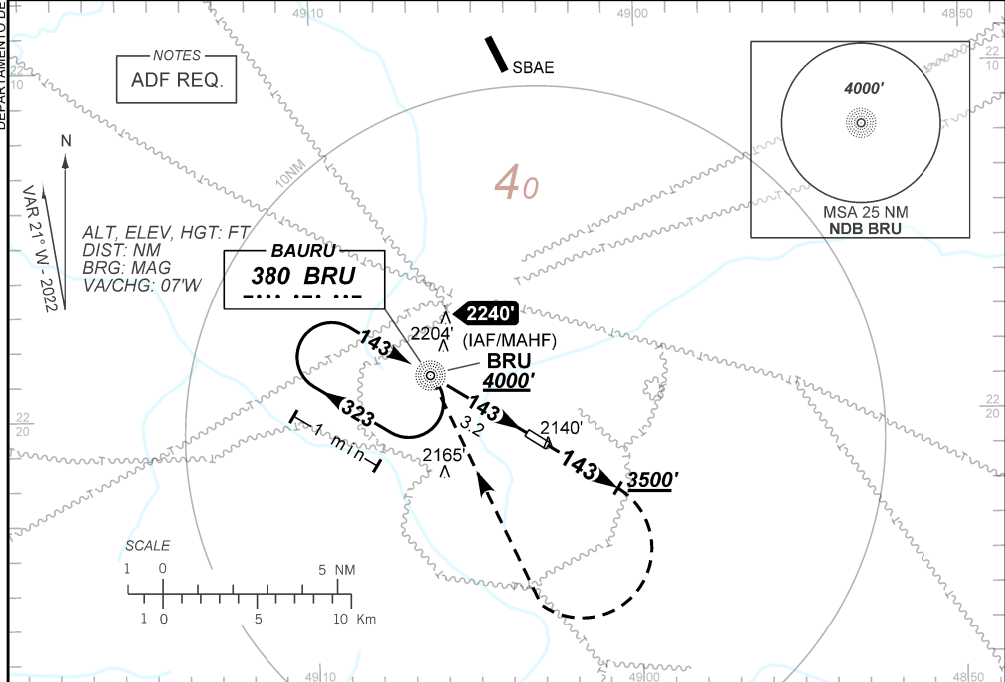
ATIS 127.875	TWR NIL	AFIS BAURU 121.30	GND C NIL
NDB BRU 380 KHz	FINAL CRS 143°	FAF: N/A	NDB MDA / (OCH): 2430' / (430')

APCH Perdida: Subir para **4000'**. Manter QDR **143** do NDB BRU até cruzar **3500'**. Após, curvar à DIREITA direto BRU para espera.

Missed APCH: Climb to **4000'**. Maintain **143** QDR BRU NDB until **3500'**. After, turn RIGHT direct BRU for holding.

RMK: Circular somente pelo Setor S/SW. / Only overfly S/SW Sectors of the AD.

DEPARTAMENTO DE CONTROLE DO ESPAÇO AÉREO



NIL	RWY 14	Ground Speed (KT)	090	110	130	150	170	190
NIL	ALT	FPM	650					
NIL	(HGT)	BRU-MAPT	2:08	1:45	NA			

STRAIGHT-IN	CAT	A	B	C	D	E
NDB	MDA / (OCH)	2430' / (430')		NA		
	ALS/NO ALS/ RVR ALS (m)	NIL / 1600 / NIL				
CIRCLING	MDA / (OCH)	2440' / (440')	2520' / (520')	NA		
	VIS (m)	NIL / 1600 / NIL				

CHANGES: LAYOUT, THR ELEV