

**INSTRUMENT APPROACH
CHART (IAC)**

RIO DE JANEIRO / Santa Cruz, MIL (SBSC)

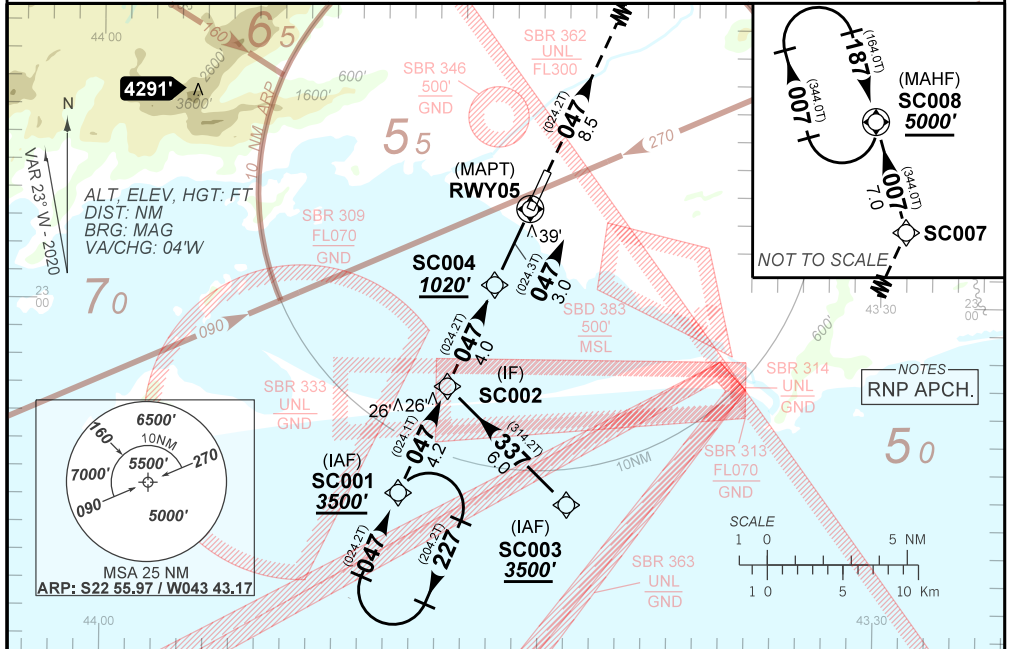
AD ELEV: 10'

RNAV(GNSS) Y RWY 05

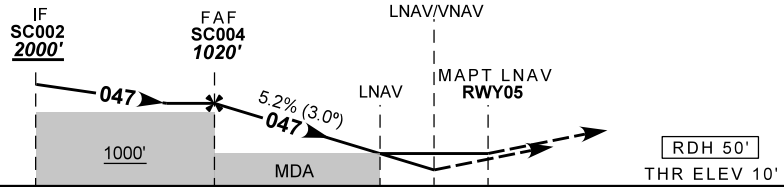
ATIS NIL	133.70 132.50 13.40 124.95 134.95	APP RIO 121.25 119.00 120.55 129.80 125.95 121.50	TWR SANTA CRUZ 118.80 122.90 121.50	GNDC SANTA CRUZ 121.80
N/A	FINAL CRS 047°	FAF: 1020'	LNAV/VNAV DA / (OCH): 320' / (310')	LNAV MDA / (OCH): 460' / (450')

APCH Perdida: Subir para **5000'**, gradiente MNM 4.0%. Manter rumo **047** até SC007. Após, curvar à ESQUERDA no rumo 007 até SC008 para espera.
 Missed APCH: Climb to **5000'**, MNM gradient 4.0%. Mantain course **047** up to SC007. Then, turn LEFT on course 007 up to SC008 for holding.

RMK: Para sistemas BARO-VNAV não compensados, procedimento LNAV/VNAV não autorizado abaixo de -20°C ou acima de 50°.
 For uncompensated systems BARO-VNAV, LNAV/VNAV procedure not authorized below -20°C or above 50°.



TA 7000'



TO THR 05 (NM)	7.0	3.0	1.1	0.8	0.0	THR ELEV 10'					
	SC004	2.0	1.1	RWY05	KT	90	110	130	150	170	190
	1020	698	460	ALT	FPM	500	600	700	800	900	1000
	1010	688	450	(HGT)	FAF-MAPT	NA					

STRAIGHT-IN	CAT	A	B	C	D	E
	DA / (OCH)	320' / (310')				NA
LNAV/VNAV	ALS/NO ALS/ RVR ALS (m)	NIL / 1400 / NIL				NA
	MDA / (OCH)	460' / (450')				
LNAV	ALS/NO ALS/ RVR ALS (m)	NIL / 1600 / NIL		NIL / 1800 / NIL		
	MDA / (OCH)	NA				
CIRCLING	MDA / (OCH)	NA				
	VIS (m)	NA				

CHANGES: DEC. FREQ. IDENT. LAYOUT. PROC.