

INSTRUMENT APPROACH CHART (IAC)

FORTALEZA / Pinto Martins, INTL (SBFZ)

AD ELEV: 83'

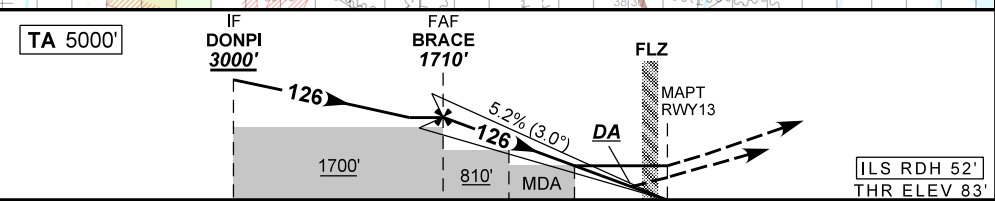
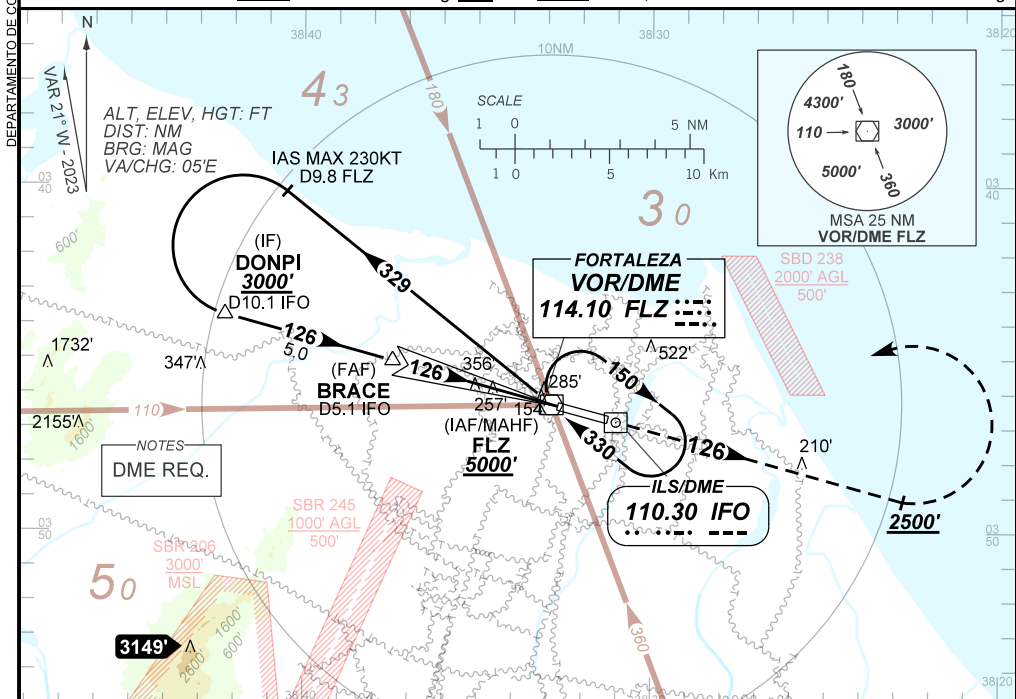
ILS Y or LOC Y RWY 13

D-ATIS 127.70	APP FORTALEZA 120.50 133.00 134.55	TWR FORTALEZA 129.00	GNDCL FORTALEZA 121.95
-------------------------	--	--------------------------------	----------------------------------

ILS/DME IFO 110.30 MHz	FINAL CRS 126°	FAF: 1710'	CAT I DA / (OCH): REFER TO MNM	LOC MDA / (OCH): 510' / (430')
----------------------------------	--------------------------	----------------------	--	--

APCH Perdida: Subir para **5000'**. Manter proa **126** até **2500'**. Após, curvar à ESQUERDA direto VOR FLZ para espera.

Missed APCH: Climb to **5000'**. Maintain heading **123** until **2500'**. After, turn LEFT direct to FLZ VOR for holding.



TO THR 13 (NM)	9.9	4.9	2.1	1.2	0.0
TO IFO (DME)	10.1	5.1	2.3	1.4	0.2

	BRACE	4.0	3.0	2.1	1.2	RWY13	Ground Speed (KT)	090	110	130	150	170	190
	1710	1409	1090	811	510	ALT	FPM	500	600	700	800	900	1000
	1627	1326	1007	728	430	(HGT)	FAF-MAPT	NA					

STRAIGHT-IN	CAT		A		B		C		D		E	
	DA / (OCH)				283' / (200')				335' / (252')			
CAT I	ALS / NO ALS / RVR (m)				NIL / 1200 / NIL				NIL / 1300 / NIL			
	MDA / (OCH)				510' / (430')							
LOC	ALS / NO ALS / RVR (m)				NIL / 1600 / NIL				NIL / 2000 / NIL			
	MDA / (OCH)						NA					
CIRCLING	MDA / (OCH)						NA					
	VIS (m)											

CHANGES: MNM, PRGC.