

INSTRUMENT APPROACH CHART (IAC) CORREIA PINTO / Aeroporto Ricardo Sell Wagner - Regional da Serra Catarinense (SNCP)

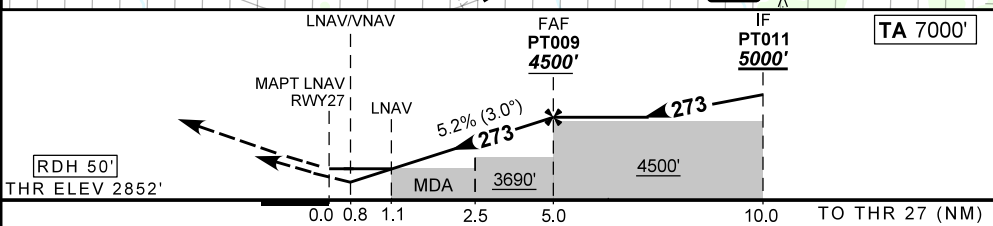
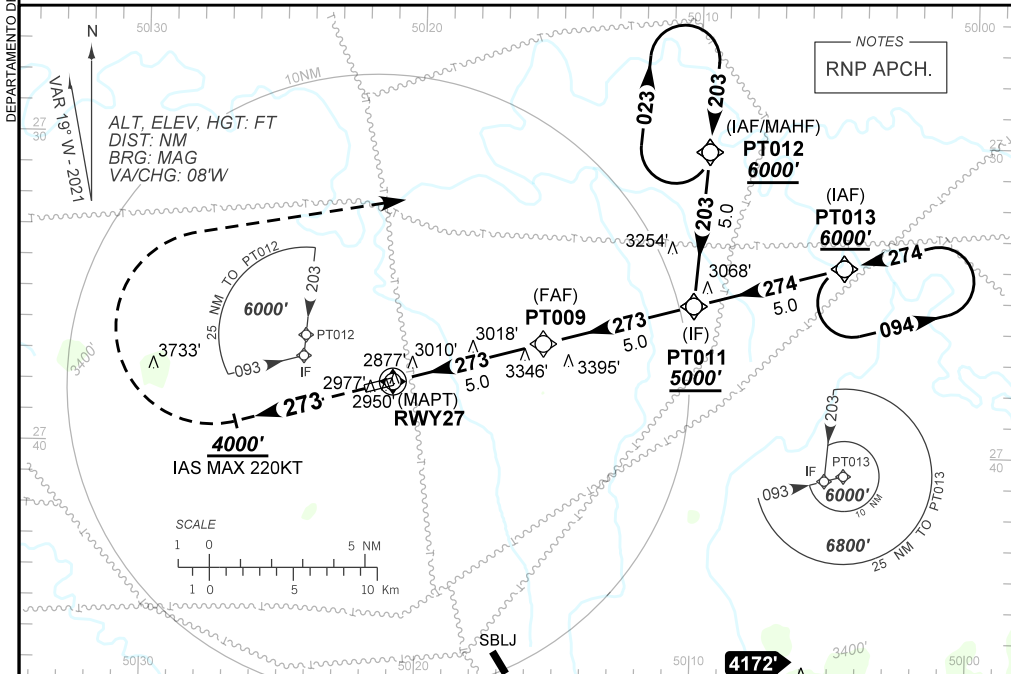
AD ELEV: 2887'

RNP RWY 27

ATIS NIL	APP NIL	AFIS 131.10	GNDC NIL
TEMP LNAV/VNAV MIN -10°C / MAX 45°C	FINAL CRS 273°	FAF: 4500'	LNAV/VNAV DA / (OCH): 3171' / (319')
		LNAV MDA / (OCH): 3260' / (410')	

APCH Perdida: Subir para **6000'**. Manter proa **273°** até **4000'**. Após, curvar à DIREITA direto PT012 para espera.

Missed APCH: Climb to **6000'**. Maintain heading **273°** until **4000'**. After, turn RIGHT direct PT012 for holding.



RWY27	1.1	2.5	3.0	4.0	PT009	Ground Speed (KT)	090	110	130	150	170	190
ALT	3260	3690	3857	4176	4500	FPM	500	600	700	800	900	NA
(HGT)	410	838	1005	1324	1648	FAF-MAPT	NIL					

STRAIGHT-IN	CAT	A	B	C	D	E
LNAV/VNAV	DA / (OCH)	3171' / (319')				
	ALS/NO ALS/ RVR ALS (m)	NIL / 1400 / NIL				
LNAV	MDA / (OCH)	3260' / (410')				
	ALS/NO ALS/ RVR ALS (m)	NIL / 1600 / NIL		NIL / 1900 / NIL		
CIRCLING	MDA / (OCH)	NA				
	VIS (m)	NA				

CHANGES: IDENT LAYOUT.