

**INSTRUMENT APPROACH
CHART (IAC)**

PRESIDENTE PRUDENTE / Presidente Prudente (SBDN)

AD ELEV: 1483'

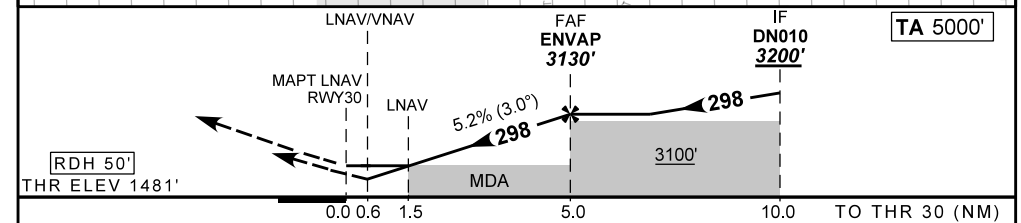
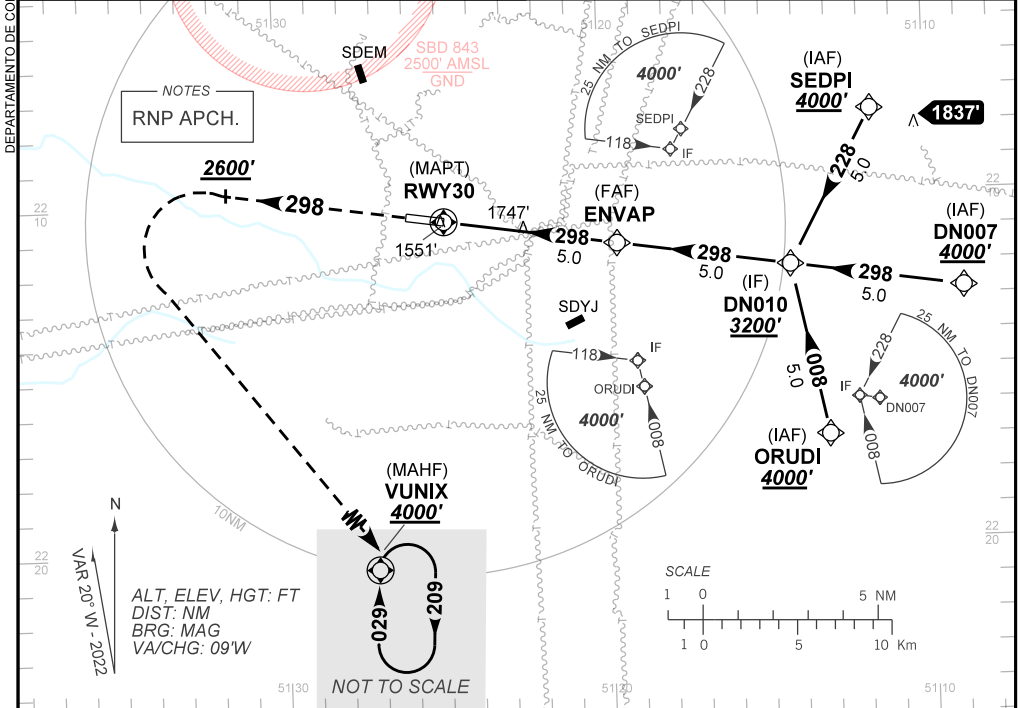
RNP RWY 30

ATIS NIL	APP PRUDENTE 125.45	TWR PRUDENTE 118.45	AFIS PRUDENTE 125.45	GND C NIL
-------------	------------------------	------------------------	-------------------------	--------------

TEMP LNAV/VNAV MIN 0°C / MAX 48°C	FINAL CRS 298°	FAF: 3130'	LNAV/VNAV DA / (OCH): 1731' / (250')	LNAV MDA / (OCH): 2000' / (520')
--------------------------------------	-------------------	---------------	---	-------------------------------------

APCH Perdida: Subir para **4000'**. Manter rumo **298** até **2600'**. Após, curvar à ESQUERDA direto VUNIX para espera.

Missed APCH: Climb to **4000'**. Maintain course **298** until **2600'**. After, turn LEFT direct VUNIX for holding.



RWY30	1.5	2.0	3.0	4.0	ENVAP		Ground Speed (KT)	090	110	130	150	170	190
ALT	2000	2168	2486	2805	3130		FPM	500	600	700	800	900	NA
(HGT)	520	687	1005	1324	1649		FAF-MAPT	NIL					

STRAIGHT-IN	CAT	A	B	C	D	E	
	DA / (OCH)	1731' / (250')					NA
LNAV/VNAV	ALS/NO ALS/ RVR ALS (m)	NIL / 1300 / NIL					
	MDA / (OCH)	2000' / (520')					
LNAV	ALS/NO ALS/ RVR ALS (m)	NIL / 1600 / NIL			NIL / 2400 / NIL		
	MDA / (OCH)	NIL					
CIRCLING	MDA / (OCH)	NIL					
	VIS (m)	NIL					