

**INSTRUMENT APPROACH
CHART (IAC)**

GUARATINGUETÁ / Campo Edu Chaves (SBGW)

**RNP B RWY 02
(CAT A, B, C)**

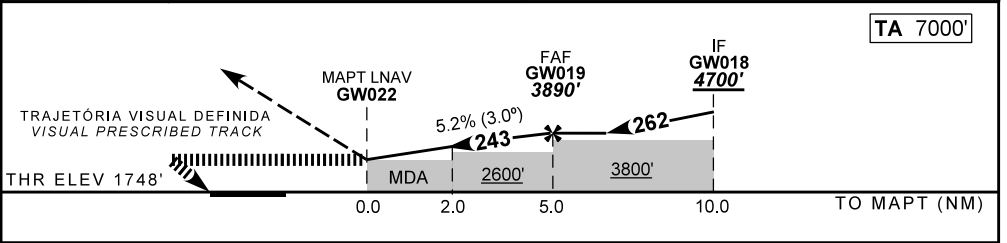
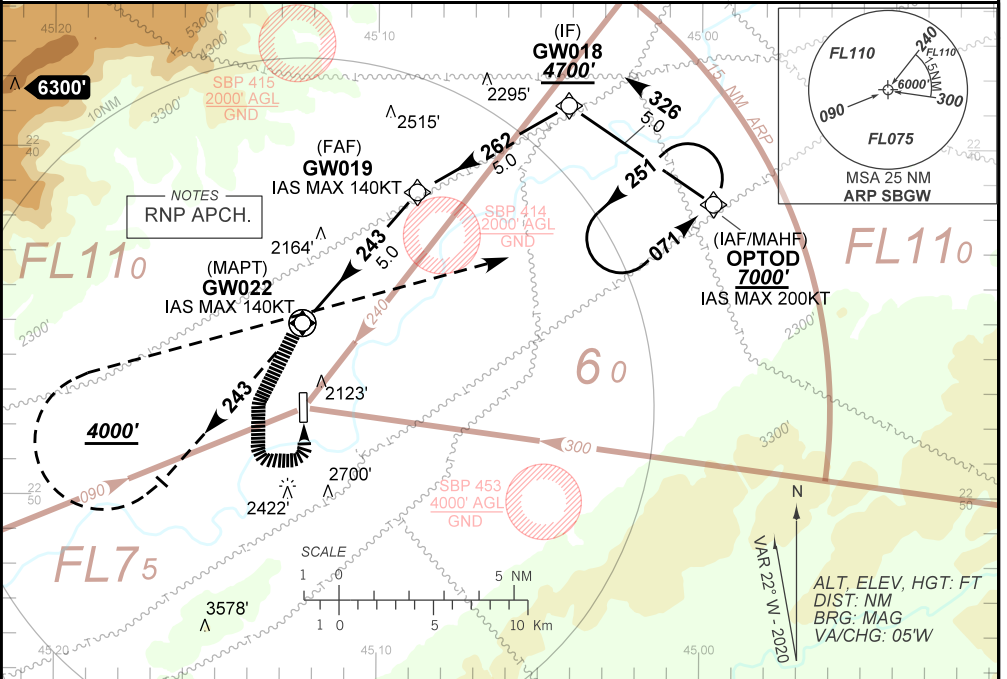
AD ELEV: 1761'

ATIS NIL	APP GUARÁ 120.15		TWR GUARÁ 118.15	GNDC NIL
N/A	FINAL CRS 243°	FAF: 3890'	N/A	N/A

APCH Perdida: 1) Subir para **7000'**. Manter proa **243** até cruzar **4000'**. Então, curvar à DIREITA direto OPTOD para espera. 2) Gradiente MNM 5.0% até 6000'. Após, 2.5%. 3) IAS MAX 180KT até OPTOD.

Missed APCH: 1) Climb to **7000'**. Maintain heading **243** until passing **4000'**. Then, turn RIGHT direct OPTOD for holding. 2) MNM gradient 5.0% until 6000'. After, 2.5%. 3) IAS MAX 180KT until OPTOD.

DEPARTAMENTO DE CONTROLE DO ESPAÇO AÉREO



MAPT	GW022	1.0	2.0	3.0	4.0	GW019	Ground Speed (KT)	090	110	130	150	170	190
ALT	2400	2718	3036	3355	3673	3890	FPM	500	600	700	800	NA	NA
(HGT)	640	957	1275	1594	1912	2129	FAF-MAPT	NA					

STRAIGHT-IN	CAT	A	B	C	D	E
	MDA / (OCH)	NA				
LNAV	ALS/NO ALS/ RVR ALS (m)	NA				
	MDA / (OCH)	2400' / (640')				
CIRCLING	MDA / (OCH)	2400' / (640')				
	VIS (m)	1900	2800	3700	NA	

CHANGES: IDENT, LAYOUT, THR ELEV.

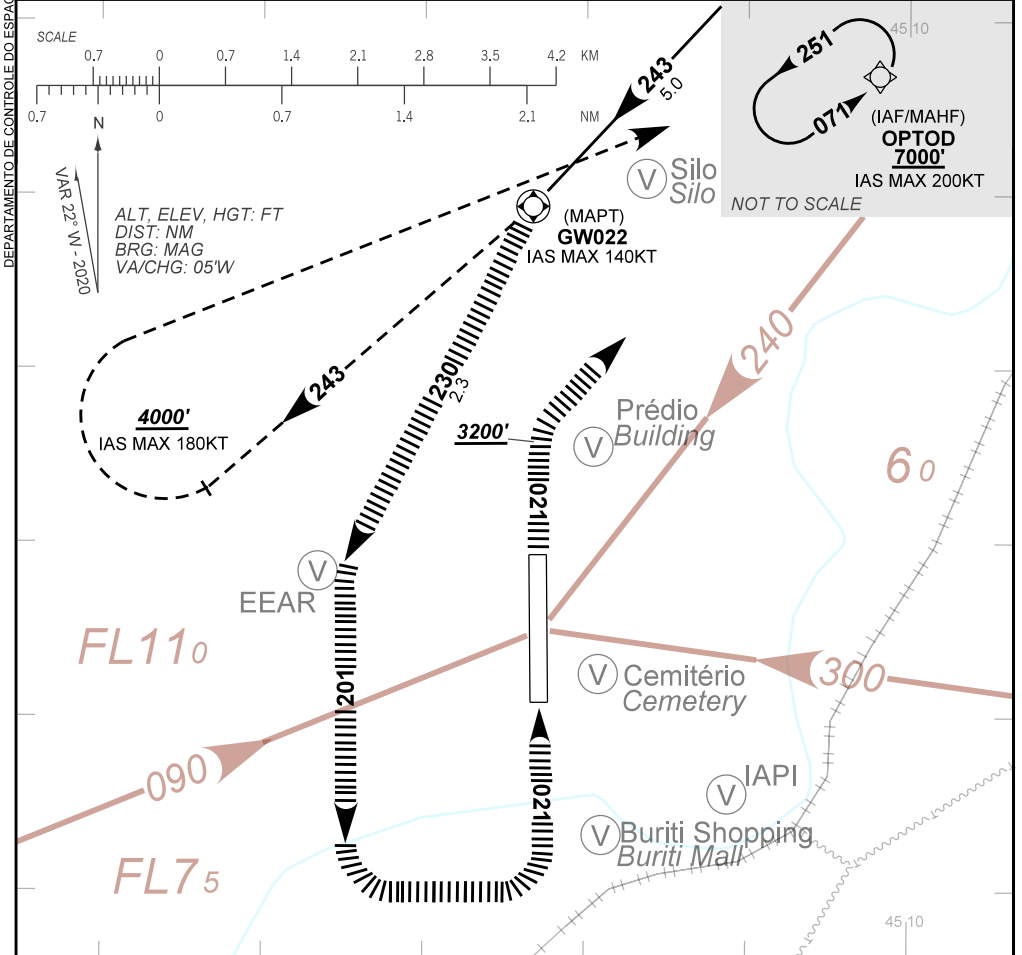
**INSTRUMENT APPROACH
CHART (IAC)**

GUARATINGUETÁ / Campo Edu Chaves (SBGW)

**RNP B RWY 02
(CAT A, B, C)**

AD ELEV: 1761'

ATIS NIL	APP GUARÁ 120.15	TWR GUARÁ 118.15	GNDC NIL
--------------------	----------------------------	----------------------------	--------------------



**TRAJETÓRIA VISUAL DEFINIDA RWY 02
VISUAL PRESCRIBED TRACK RWY 02**

- 1) O procedimento deverá ser autorizado pelo APP GUARÁ durante a aproximação final e aproximação perdida.
Procedure must be authorized by GUARÁ APP on final and missed approach.
- 2) O piloto deverá estar em contato visual e prover sua própria separação com as referências visuais:
*The pilot should have visual contact and provide his own separation with the visual references: Silo (S22 44.90 W045 11.62), Prédio (S22 46.44 W045 11.95) e a EEAR (S22:47.16 W045:13.66).
The pilot should have visual contact and provide his own separation with the visual references: Silo (S22 44.90 W045 11.62), Building (S22 46.44 W045 11.95) and EEAR (S22:47.16 W045:13.66).*
- 3) Em caso de aproximação perdida durante a manobra para circular: Subir imediatamente para 7000' no rumo 021. Após passar 3200', voar direto OPTOD para espera.
In case of go around during the circling maneuvering: Immediate climb to 7000' on course 021. After passing 3200', fly direct OPTOD for holding.
- 4) Perna base RWY02 limitada ao setor norte da rodovia Dutra. Caso não seja possível, informar ao APP/TWR Guará.
RWY02 base leg limited to the north sector of the Dutra highway. If not possible, inform Guará APP/TWR .
- 5) Observar AIC sobre circulação visual na Terminal São Paulo. (REA Mike).
See AIC about visual flight in São Paulo Terminal Area. (Mike REA).

CHANGES: IDENT, LAYOUT, THR, ELEV.

AIRAC AMDT 2402A1 22 FEB 24

SBGW_IAC_00K 2/2
IAC RNP B RWY 02

DEPARTAMENTO DE CONTROLE DO ESPAÇO AÉREO