

**INSTRUMENT APPROACH
CHART (IAC)**

CRUZEIRO DO SUL / Cruzeiro do Sul, INTL (SBCZ)

AD ELEV: 636'

RNP Z RWY 10

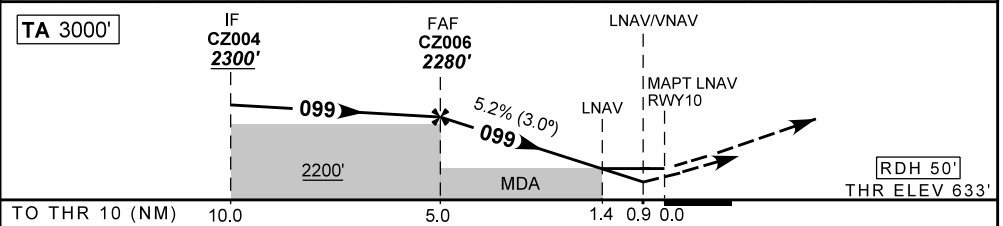
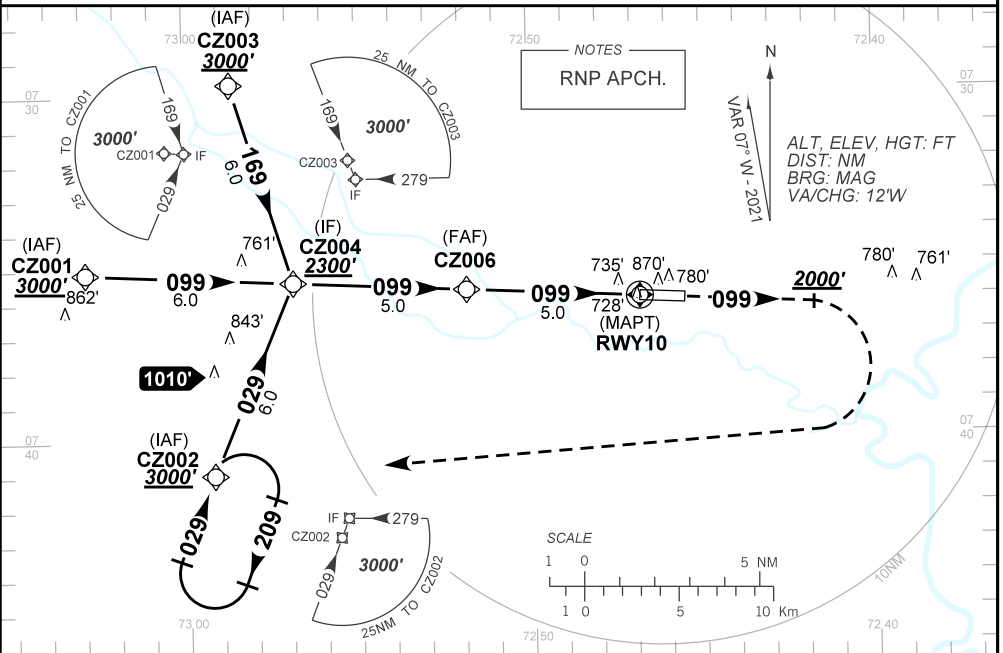
DEPARTAMENTO DE CONTROLE DO ESPAÇO AÉREO

ATIS NIL	APP CRUZEIRO NIL	AFIS CRUZEIRO 125.70	GNDC CRUZEIRO NIL
FINAL CRS MIN 0°C / MAX 50°C	FINAL CRS 099°	FAF: 2280'	LNAV MDA / (OCH): 1120' / (490')
LNAV/VNAV DA / (OCH): 979' / (346')		LNAV MDA / (OCH): 1120' / (490')	

APCH Perdida: Subir para **3000'**. Manter proa **099** até cruzar **2000'**. Após, curvar à DIREITA direto CZ002 para espera.

Missed APCH: Climb to **3000'**. Maintain heading **099** until passing **2000'**. After, turn RIGHT direct to CZ002 for holding.

RMK: NIL.



CZ006	4.0	3.0	2.0	1.4	RWY10	KT	90	110	130	150	170	190
2280	1960	1641	1323	1120	ALT	FPM	500	600	700	800	900	NA
1644	1324	1005	687	490	(HGT)	FAF-MAPT	NA					

STRAIGHT-IN	CAT	A	B	C	D	E
	DA / (OCH)	979' / (346')				
LNAV/VNAV	ALS/NO ALS/ RVR ALS (m)	NIL / 1600 / NIL				
	MDA / (OCH)	1120' / (490')				
LNAV	ALS/NO ALS/ RVR ALS (m)	NIL / 1600 / NIL		NIL / 2300 / NIL		
	MDA / (OCH)	NA				
CIRCLING	MDA / (OCH)	NA				
	VIS (m)	NA				

CHANGES: DEC. MNM LAYOUT. PROC. TA.