

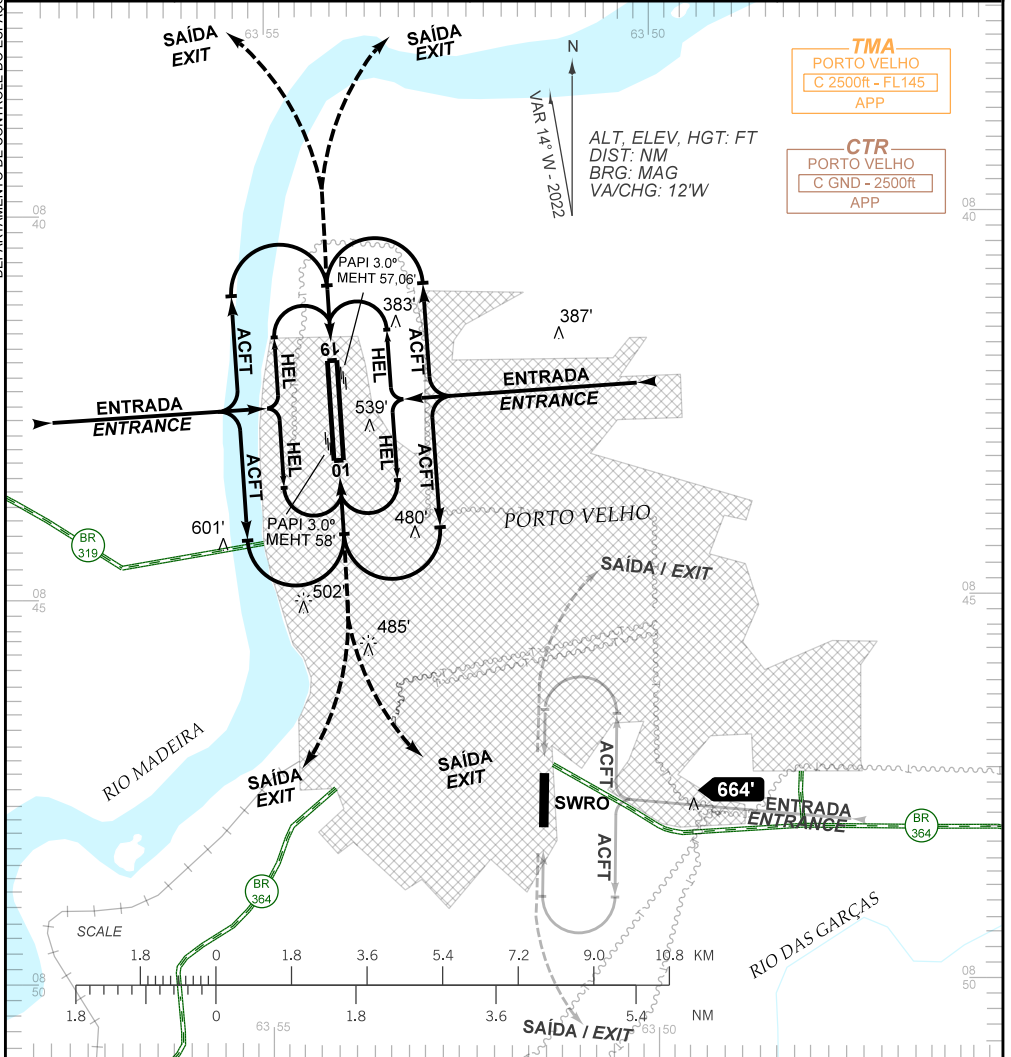
**VISUAL APPROACH CHART (VAC)**

**PORTO VELHO / Governador Jorge Teixeira de Oliveira, INTL (SBPV)**

**AD ELEV: 295'**

**RWY 01/19**

<b>D-ATIS</b> <b>127.45</b>	<b>APP PORTO VELHO</b> <b>120.25 120.80</b>	<b>TWR PORTO VELHO</b> <b>118.55</b>	<b>DCL</b> <b>118.20</b>
--------------------------------	--	---	-----------------------------



**RMK:**

**1- ALTITUDES MÍNIMAS NO CIRCUITO DE TRÁFEGO:**

**MINIMUM ALTITUDES IN THE TRAFFIC CIRCUIT:**

**1.1- AERONAVES / AIRPLANES:**

- CAT A, B, C: 1300'

- CAT D, E: 1800'

**1.2- HELICÓPTEROS / HELICOPTERS: 900'**

**2- OBSERVAR ACFT E ULTRALEVES EM VOO DE INSTRUÇÃO PRÓXIMO AO AD. OBSERVE ACFT AND ULTRALIGHT IN INSTRUCTION FLIGHT NEARBY THE AD.**

**3- OBSERVAR CONCENTRAÇÃO DE PÁSSAROS THR 01 E PERNA DO VENTO THR 19. BE AWARE TO BIRD CONCENTRATION THR 01 AND DOWNWIND LEG THR 19.**

**4- PARA POUSO EM SWRO, VER VAC DESTE AERÓDROMO. FOR LANDING IN SWRO, SEE VAC OF THIS AERODROME.**

CHANGES: NEW CHART.