

INSTRUMENT APPROACH
CHART (IAC)

NATAL / Campo Augusto Severo, MIL (SBNT)

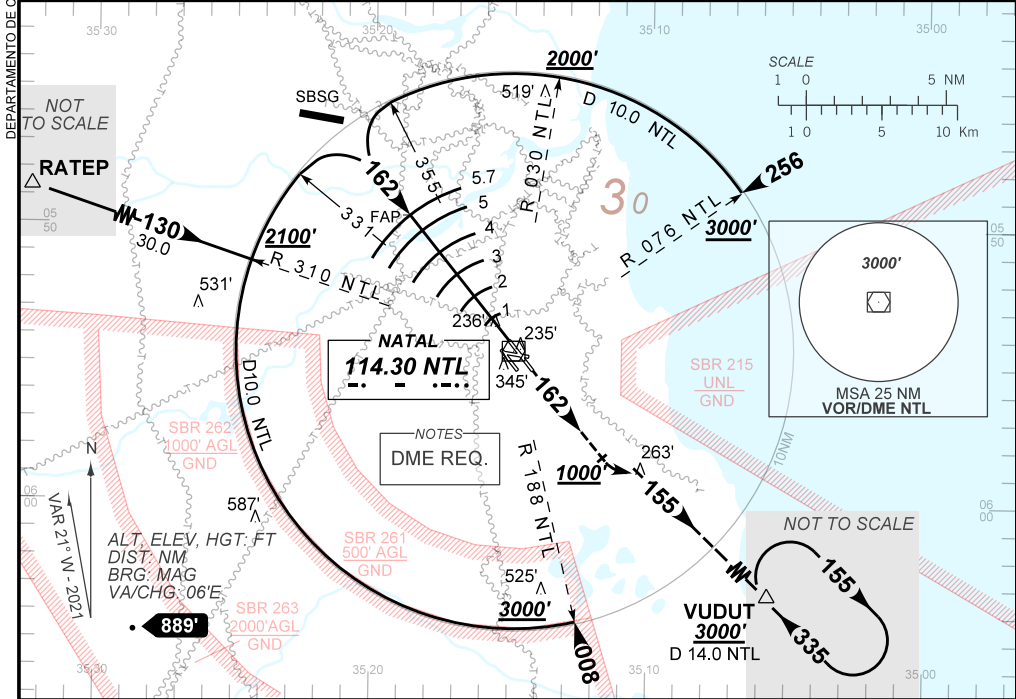
**USO EXCLUSIVO ACFT MILITARES
MILITARY ACFT ONLY**

PAR / DME RWY 16L

AD ELEV: 171'

D-ATIS 132.65	APP NATAL 119.30 119.65 120.65 129.80	PAR NATAL 128.875 132.40 348.65 359.00	TWR NATAL 118.70 122.80	GNDC NATAL 121.90
N/A	FINAL CRS 162°	FAP: 2000'	PAR DA / (OCH): 415' / (266')	N/A

APCH Perdida: Subir para **3000'**. Após **1000'**, interceptar e manter RDL **155** VOR NTL até VUDUT para espera.
Missed APCH: Climb to **3000'**. After **1000'**, intercept **155** RDL NTL VOR up to VUDUT for holding.



TA 4000'

FAP 2000'

162

1784'

1466'

1147'

829'

415'

5.7 5.0 4.0 3.0 2.0 0.7 0.0

TCH 51'

THR ELEV 149'

TO THR 16L (NM)

NIL	RWY16L	KT	090	110	130	150	170	190
NIL	ALT	FPM	500	600	700	800	900	1000
NIL	(HGT)	FAF-MAPT	NA					

STRAIGHT-IN	CAT	A	B	C	D	E
PAR	DA / (OCH)	415' / (266')				
	ALS/NO ALS / RVR ALS (m)	NIL / 1300 / NIL				
CIRCLING	MDA / (OCH)	NA				
	VIS (m)	NA				

CHANGES: EAC. IDENT. LAYOUT.

AIRAC AMDT 2202A1 24 FEB 22

USO EXCLUSIVO ACFT MILITARES / MILITARY ACFT ONLY

SBNT_IAC_01G 1/1
IAC PAR / DME RWY 16L