

**INSTRUMENT APPROACH  
CHART (IAC)**

**JOINVILLE / Lauro Carneiro de Loyola (SBJV)**

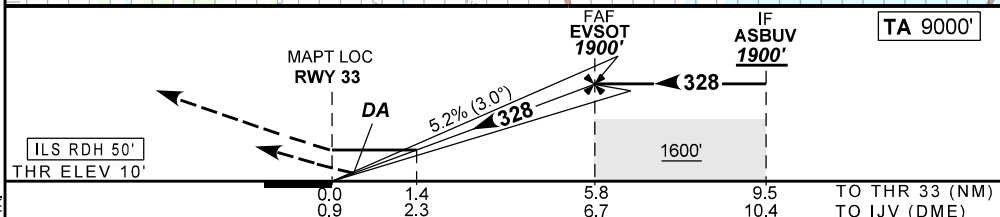
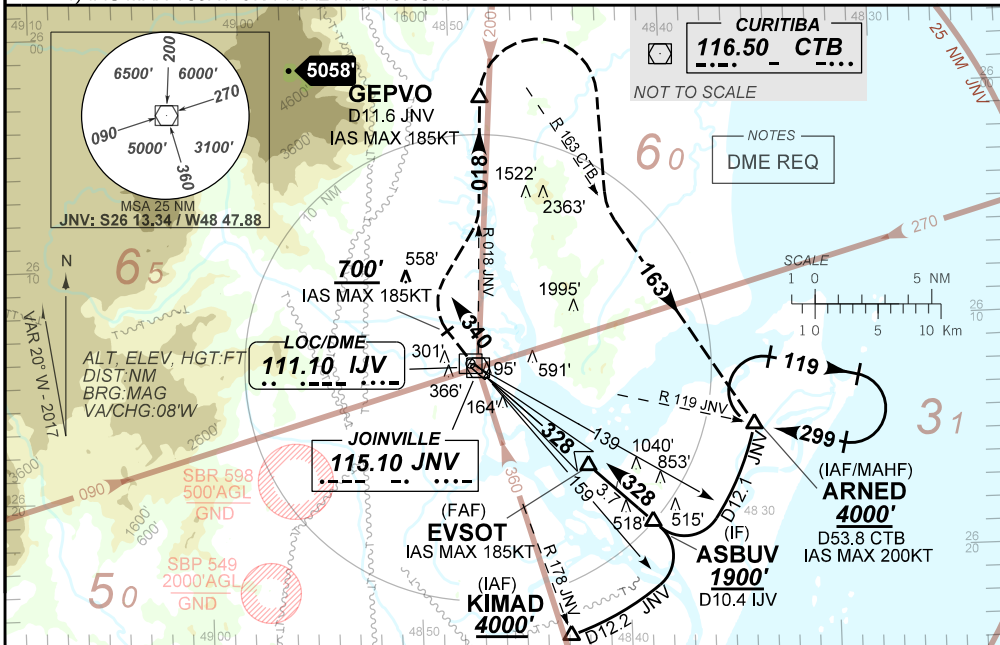
**AD ELEV: 15'**

**ILS W ou/ or LOC W RWY 33**

ATIS <b>127.85</b>	APP CURITIBA <b>119.70 119.95 120.65 120.95 129.55 133.15</b>			TWR JOINVILLE <b>118.00</b>	GNDC <b>NIL</b>
LOC IJV <b>111.10 MHz</b>	FINAL CRS <b>328°</b>	FAF <b>1900'</b>	CAT I DA / (OCH): <b>REFER TO MNM</b>	LOC only MDA / (OCH): <b>510' (500')</b>	

APCH Perdida: Subir para **4000'**. Curvar à DIREITA na proa **340**, IAS MAX 185KT, até cruzar **700'**. Curvar à DIREITA, IAS MAX 185KT, RDL **073** JNV, para GEPVO. Curvar à DIREITA, IAS MAX 200KT, RDL **163** CTB para ARNED, para espera.  
 Missed APCH: Climb to **4000'**. Turn **RIGHT**, IAS MAX 185KT, heading **340**, until passing **700'**. Then, turn **RIGHT** RDL **073** JNV, IAS MAX 185KT, to GEPVO. Then, turn **RIGHT**, IAS MAX 200KT, RDL **163** CTB, to **ARNED** for holding.

RMK: 1) IAS MAX 185KT NA APROXIMAÇÃO FINAL.  
 1) IAS MAX 185KT ON FINAL APPROACH.



RWY33	1.4	2.0	3.0	4.0	EVSOT		KT	090	110	130	150	170	190
ALT	510	697	1015	1334	1900		FPM	500	600	700	800	900	NA
(HGT)	500	687	1005	1324	1890		FAF-MAPT	NA					

STRAIGHT-IN	CAT	A	B	C	D	E
CAT I	DA / (OCH)	210' / (200')				
*Missed APCH Climb Gradient	4.0%	NIL / 1200 / NIL				
CAT I	DA / (OCH)	300' / (290')		350' / (340')		
	ALS/NO ALS/RVR ALS (m)	NIL / 1400 / NIL		NIL / 1600 / NIL		
LOC	MDA / (OCH)	510' / (500')				
	ALS/NO ALS/RVR ALS (m)	NIL / 2300 / NIL				

CHANGES: ATIS, EAC, FREQ, MNM, OPR, TA.