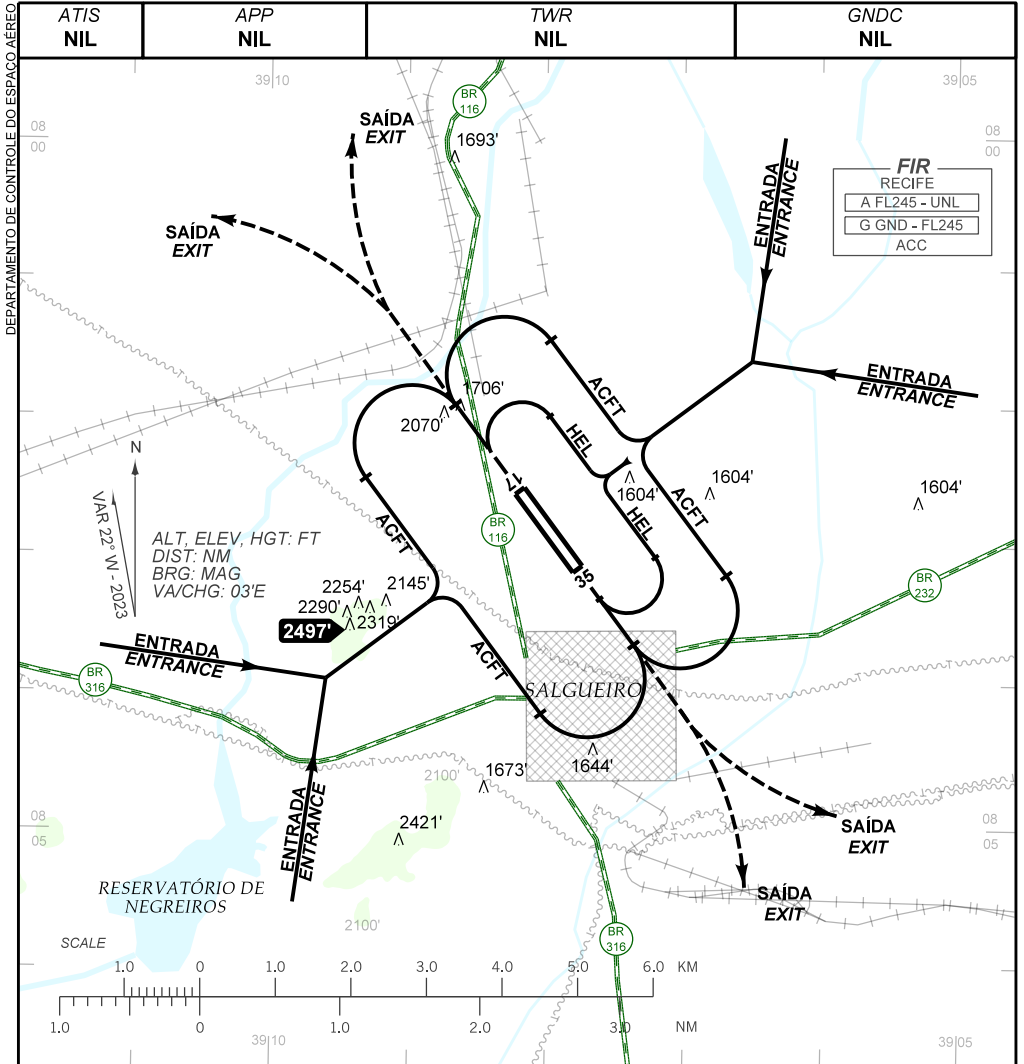


VISUAL APPROACH CHART  
(VAC)

SALGUEIRO / Salgueiro (SNSG)

AD ELEV: 1539'

RWY 17 / 35



**RMK:**

- 1- AUTORIZADO SOMENTE / ONLY AUTHORIZED ACFT CAT A, B, C, H.
- 2- HELICÓPTEROS: CIRCUITO DE TRÁFEGO SOMENTE PELO SETOR "N/NE" DO AERÓDROMO.  
HELICOPTERS: TRAFFIC CIRCUIT ONLY BY "N/NE" SECTOR FROM AERODROME.
- 3- ALTITUDES MÍNIMAS NO CIRCUITO DE TRÁFEGO:  
MINIMUM ALTITUDES IN THE TRAFFIC CIRCUIT:
  - 3.1- AERONAVES / AIRPLANES:
    - CAT A: 2800'
    - CAT B: 2900'
    - CAT C: 3100'
  - 3.2- HELICÓPTEROS / HELICOPTERS: 2800'.

CHANGES: AD ELEV. LAYOUT.