

**INSTRUMENT APPROACH
CHART (IAC)**

MANAUS / Campo Ponta Pelada, MIL (SBMN)

**USO EXCLUSIVO ACFT MILITARES
MILITARY ACFT ONLY**

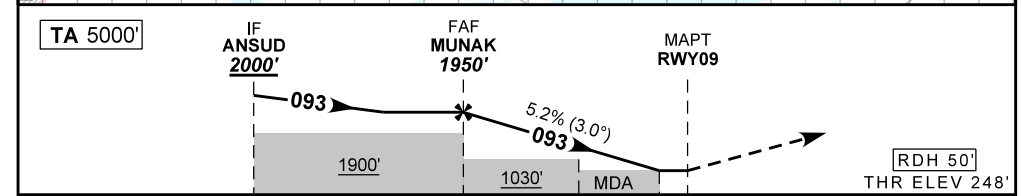
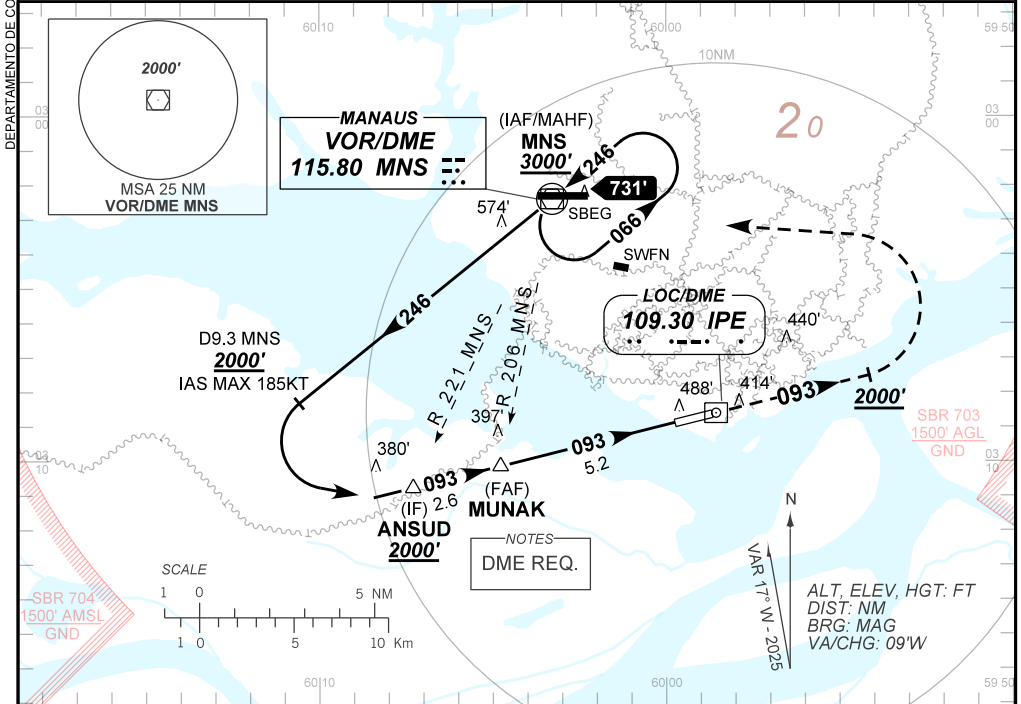
LOC RWY 09

AD ELEV: 257'

ATIS NIL	APP MANAUS 119.25 119.70 120.40 129.55 129.80	TWR PONTA PELADA 118.60	GNDC NIL
--------------------	---	-----------------------------------	--------------------

LOC/DME IPE 109.30 MHz	FINAL CRS 093°	FAF: 1950'	N/A	LOC MDA / (OCH): 670' / (430')
----------------------------------	--------------------------	----------------------	-----	--

APCH Perdida: Subir para **3000'**. Manter proa **093** até **2000'**. Após, curvar a ESQUERDA direto VOR MNS para espera.
Missed APCH: Climb to **3000'**. Maintain heading **093** until **2000'**. After, turn LEFT direct MNS VOR for holding.



TO THR 09 (NM)	7.8	5.2	2.3	1.2	0.0
TO IPE (DME)	9.0	6.4	3.5	2.4	1.2

	MUNAK	4.0	3.0	2.3	1.2	RWY09	Ground Speed (KT)	090	110	130	150	170	190
1950	1572	1253	1030	670	ALT	FPM	500	600	700	800	900	1000	
1702	1324	1005	782	430	(HGT)	FAF-MAPT	NA						

STRAIGHT-IN	CAT	A	B	C	D	E
	MDA / (OCH)	670' / (430')				
LOC	ALS/NO ALS/ RVR ALS (m)	NIL / 1600 / NIL			NIL / 2000 / NIL	
CIRCLING	MDA / (OCH)	NA				
	VIS (m)					

CHANGES: PROC. OBST. VAR.

DEPARTAMENTO DE CONTROLE DO ESPACO AEREO