

**INSTRUMENT APPROACH
CHART (IAC)**

NATAL / Augusto Severo, MIL (SBNT)

AD ELEV: 171'

RNP RWY 34L

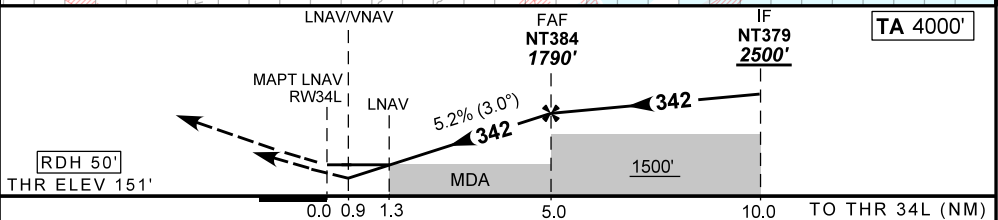
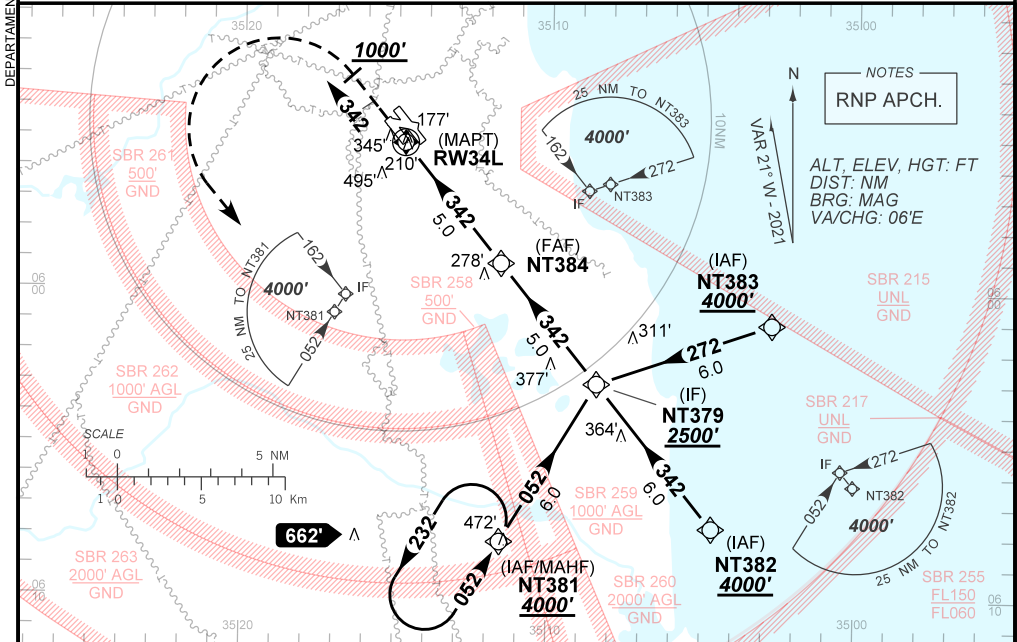
D-ATIS 132.65	APP NATAL 119.30 119.65 120.65 129.80	TWR NATAL 118.70 122.80	GNDQ NATAL 121.90
-------------------------	---	-----------------------------------	-----------------------------

TEMP LNAV/VNAV MIN 0°C / MAX 50°C	FINAL CRS 342°	FAF: 1790'	LNAV/VNAV DA / (OCH): 490' / (339')	LNAV MDA / (OCH): 610' / (460')
---	--------------------------	----------------------	---	---

APCH Perdida: Subir para **4000'**, gradiente MNM 4.0% até **1000'**. Manter proa **342** até cruzar **1000'**. Após, curvar à ESQUERDA direto NT381 para espera.

Missed APCH: Climb to **4000'**, MNM gradient 4.0% until **1000'**. Maintain heading **342** until passing **1000'**. After, turn LEFT direct to NT381 for holding.

RMK: NIL.



RWY34	0.9	1.3	2.0	3.0	4.0	NT384	Ground Speed (KT)	090	110	130	150	170	190
ALT	490	610	838	1156	1475	1790	FPM	500	600	700	800	900	1000
(HGT)	339	460	687	1005	1324	1639	FAF-MAPT	NIL					

STRAIGHT-IN	CAT	A	B	C	D	E
LNAV/VNAV	DA / (OCH)	490' / (339')				NA
	ALS/NO ALS/ RVR ALS (m)	NIL / 1500 / NIL				
LNAV	MDA / (OCH)	610' / (460')				
	ALS/NO ALS/ RVR ALS (m)	NIL / 1600 / NIL		NIL / 2100 / NIL		
CIRCLING	MDA / (OCH)	NA				
	ALS/NO ALS/ RVR ALS (m)					

CHANGES: ADEL FREQ. LAYOUT. VAR.