

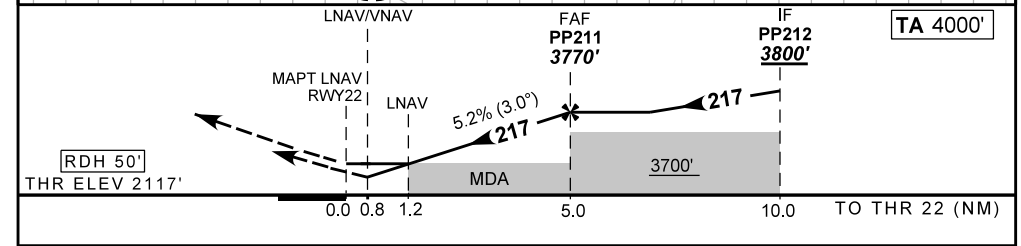
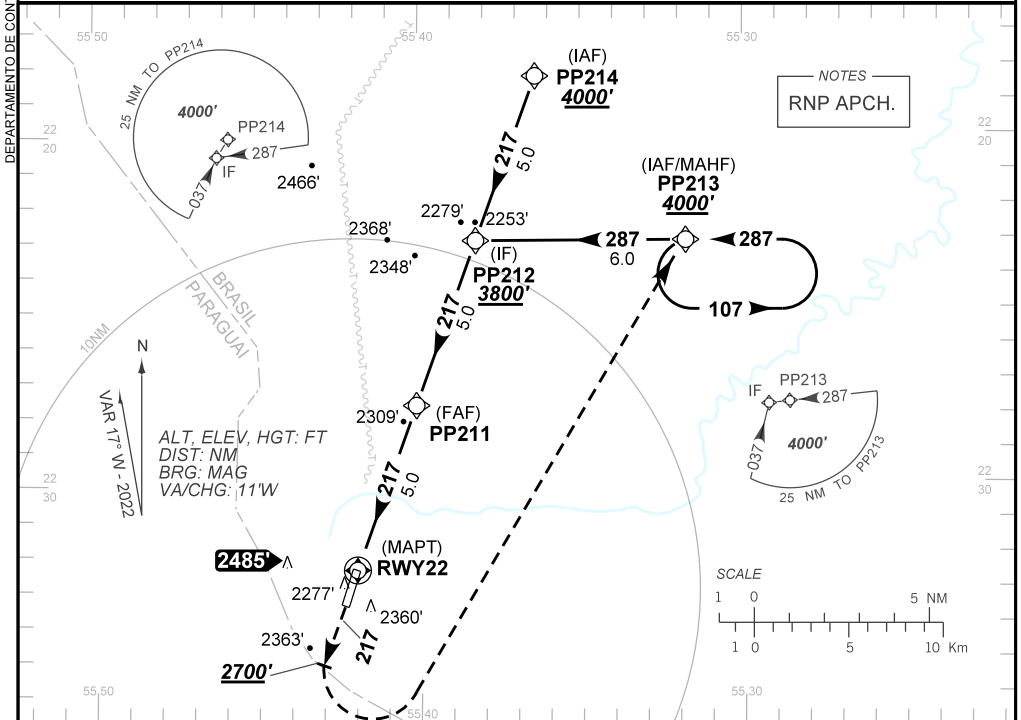
INSTRUMENT APPROACH  
CHART (IAC)

PONTA PORÃ / Ponta Porã, INTL (SBPP)

AD ELEV: 2156'

RNP RWY 22

ATIS NIL	APP NIL	AFIS PONTA PORÃ 125.90	GNDC NIL
TEMP LNAV/VNAV MIN -10°C / MAX 53°C	FINAL CRS 217°	FAF: 3770'	LNAV/VNAV DA / (OCH): 2444' / (327')
APCH Perdida: Subir para <b>4000'</b> . Manter rumo <b>217</b> até cruzar <b>2700'</b> . Curvar à ESQUERDA direto PP213 para espera		LNAV MDA / (OCH): <b>2560' / (440')</b>	
Missed APCH: Climb to <b>4000'</b> . Maintain course <b>217</b> until passing <b>2700'</b> . Turn LEFT direct to PP213 for holding.			



RWY22	1.2	2.2	3.0	4.0	PP211		Ground Speed (KT)	090	110	130	150	170	190
ALT	2560	2810	3122	3441	3770		FPM	500	600	700	800	900	NA
(HGT)	440	693	1005	1324	1653		FAF-MAPT	NIL					

STRAIGHT-IN	CAT	A	B	C	D	E	
	DA / (OCH)	2444' / (327')					NA
LNAV/VNAV	ALS/NO ALS/ RVR ALS (m)	NIL / 1500 / NIL					
	MDA / (OCH)	2560' / (440')					
LNAV	ALS/NO ALS/ RVR ALS (m)	NIL / 1600 / NIL			NIL / 2000 / NIL		
	MDA / (OCH)	NA					
CIRCLING	VIS (m)	NA					