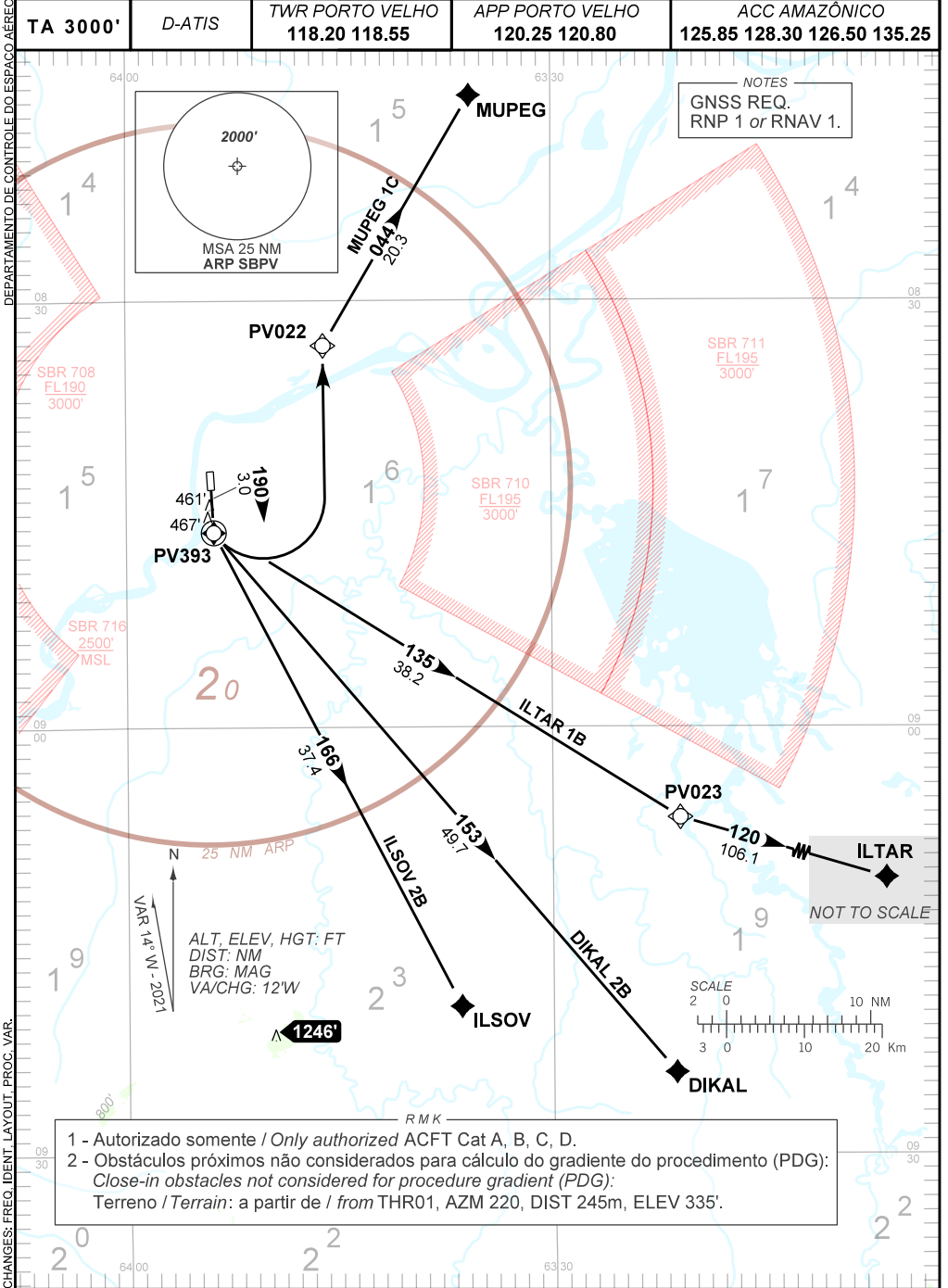


AD ELEV: 295'

RNAV DIKAL 2B - ILSOV 2B - ILTAR 1B - MUPEG 1C

TA 3000'	D-ATIS	TWR PORTO VELHO 118.20 118.55	APP PORTO VELHO 120.25 120.80	ACC AMAZÔNICO 125.85 128.30 126.50 135.25
----------	--------	----------------------------------	----------------------------------	----------------------------------------------



1 - Autorizado somente / Only authorized ACFT Cat A, B, C, D.
 2 - Obstáculos próximos não considerados para cálculo do gradiente do procedimento (PDG):
 Close-in obstacles not considered for procedure gradient (PDG):
 Terreno / Terrain: a partir de / from THR01, AZM 220, DIST 245m, ELEV 335'.