

**INSTRUMENT APPROACH
CHART (IAC)**

DIVINÓPOLIS / Brigadeiro Antônio Cabral, INTL (SNDV)

RNP RWY 35

(CAT A,B,C)

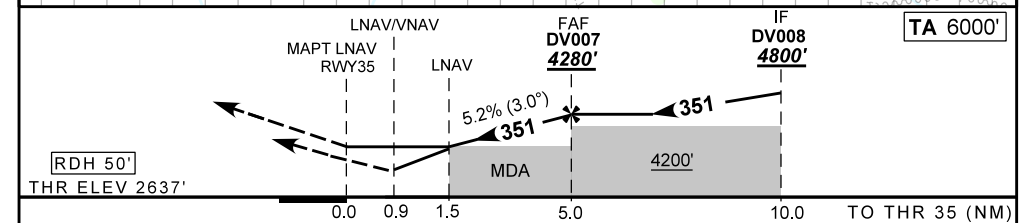
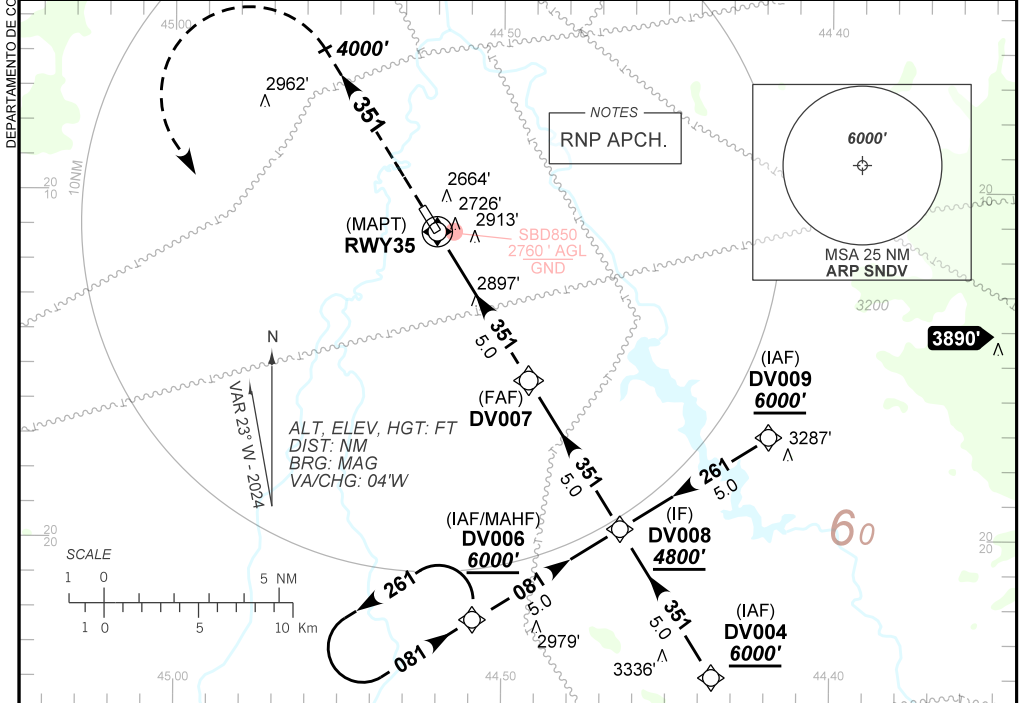
AD ELEV: 2637'

ATIS NIL	ERAA 132.35	APP NIL	TWR NIL	GNDC NIL
-------------	----------------	------------	------------	-------------

TEMP LNAV/VNAV MIN 0°C / MAX 40°C	FINAL CRS 351°	FAF: 4280'	LNAV/VNAV DA / (OCH): 2974' / (337')	LNAV MDA / (OCH): 3150' / (520')
---	--------------------------	----------------------	--	--

APCH Perdida: Subir para **6000'**. Manter rumo **351** até **4000'**, após curvar à ESQUERDA direto DV006 para espera.

Missed APCH: Climb to **6000'**. Maintain course **351** until **4000'**, after turn LEFT direct DV006 for holding.



RWY35	1.5	2.0	3.0	4.0	DV007		Ground Speed (KT)	090	110	130	150	170	190
ALT	3150	3324	3642	3961	4280		FPM	500	600	700	800	900	NA
(HGT)	520	687	1005	1324	1594		FAF-MAPT	NIL					

STRAIGHT-IN	CAT	A	B	C	D	E
	DA / (OCH)	2974' / (337')				
LNAV/VNAV	ALS/NO ALS/ RVR ALS (m)	NIL / 1500 / NIL			NA	
	MDA / (OCH)	3150' / (520')				
LNAV	ALS/NO ALS/ RVR ALS (m)	NIL / 1600 / NIL		NIL / 2500 / NIL		
	MDA / (OCH)	NA				
CIRCLING	MDA / (OCH)	NA				
	VIS (m)	NA				

AIRAC AMDT 2412A1 28 NOV 24

SNDV_IAC_00D 1/1
IAC RNP RWY 35

CHANGES: NEW CHART.

DEPARTAMENTO DE CONTROLE DO ESPAÇO AÉREO