

**INSTRUMENT APPROACH
CHART (IAC)**

NATAL / Augusto Severo, MIL (SBNT)

AD ELEV: 171'

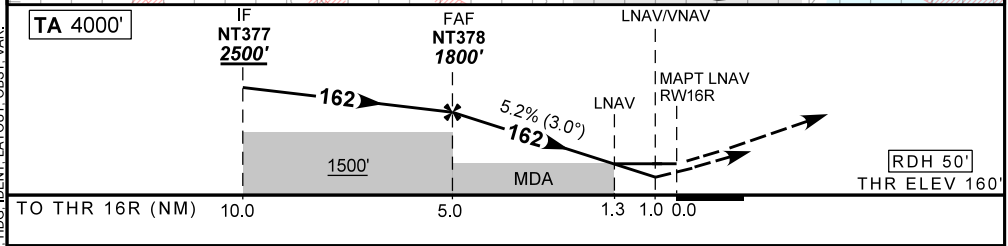
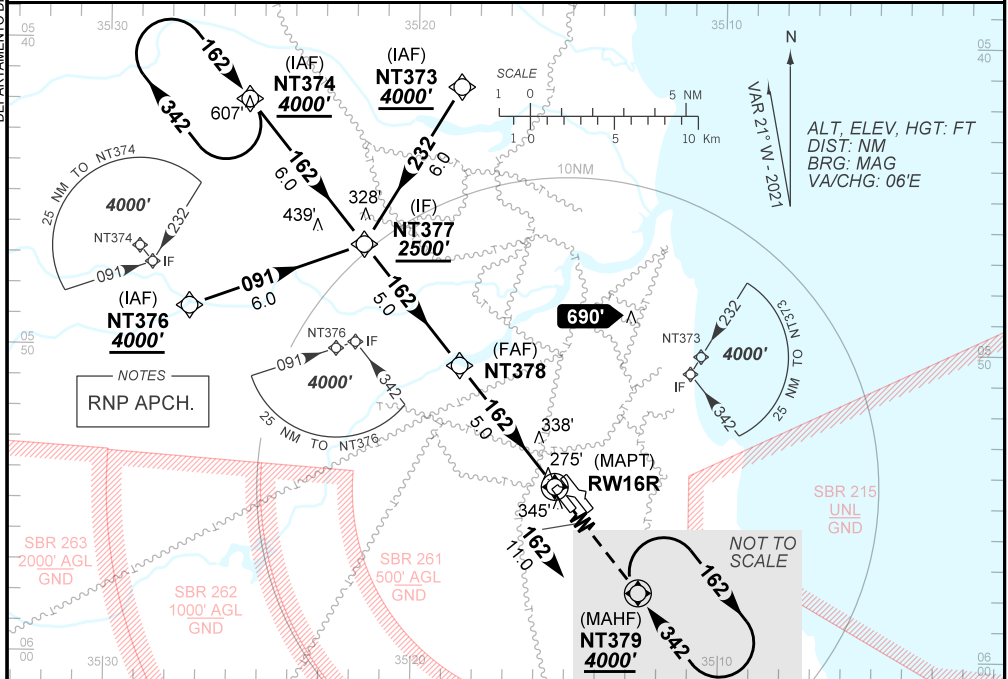
RNP RWY 16R

D-ATIS 132.65	APP NATAL 119.30 119.65 120.65 129.80	TWR NATAL 118.70 122.80	GNDC NATAL 121.90
-------------------------	---	-----------------------------------	-----------------------------

TEMP LNAV/VNAV MIN 0°C / MAX 50°C	FINAL CRS 162°	FAF: 1800'	LNAV/VNAV DA / (OCH): 520' / (359')	LNAV MDA / (OCH): 610' / (450')
---	--------------------------	----------------------	---	---

APCH Perdida: Subir para **4000'**. Manter rumo **162** até NT379 para espera.
Missed APCH: Climb to **4000'**. Maintain course **162** to NT379 for holding.

RMK: NIL.



NT378	4.0	3.0	2.0	1.3	1.0	RWY 16	Ground Speed (KT)	090	110	130	150	170	190
1800	1484	1165	847	610	520	ALT	FPM	500	600	700	800	900	1000
1640	1324	1005	687	450	359	(HGT)	FAF-MAPT	NIL					

STRAIGHT-IN	CAT	A	B	C	D	E
	DA / (OCH)	520' / (359')				NA
LNAV/VNAV	ALS/NO ALS/ RVR ALS (m)	NIL / 1600 / NIL				NA
	MDA / (OCH)	610' / (450')				
LNAV	ALS/NO ALS/ RVR ALS (m)	NIL / 1600 / NIL		NIL / 2100 / NIL		
	MDA / (OCH)	NA				
CIRCLING						
MDA / (OCH)						

AIRAC AMDT 2107A1 15 JUL 21

SBNT_IAC_00R 1/1
IAC RNP RWY 16R

DEPARTAMENTO DE CONTROLE DO ESPAÇO AÉREO
CHANGES: ALT, MINM, D-ATIS, EAC, FREQ, HDG, IDENT, LAYOUT, OBST, VAR.