

INSTRUMENT APPROACH CHART (IAC)

ATALAIA DO NORTE / Estirão do Equador, MIL (SWEE)

RNP RWY 06

AD ELEV: 281'

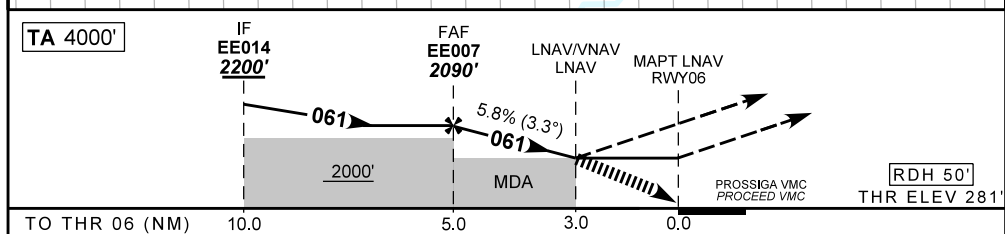
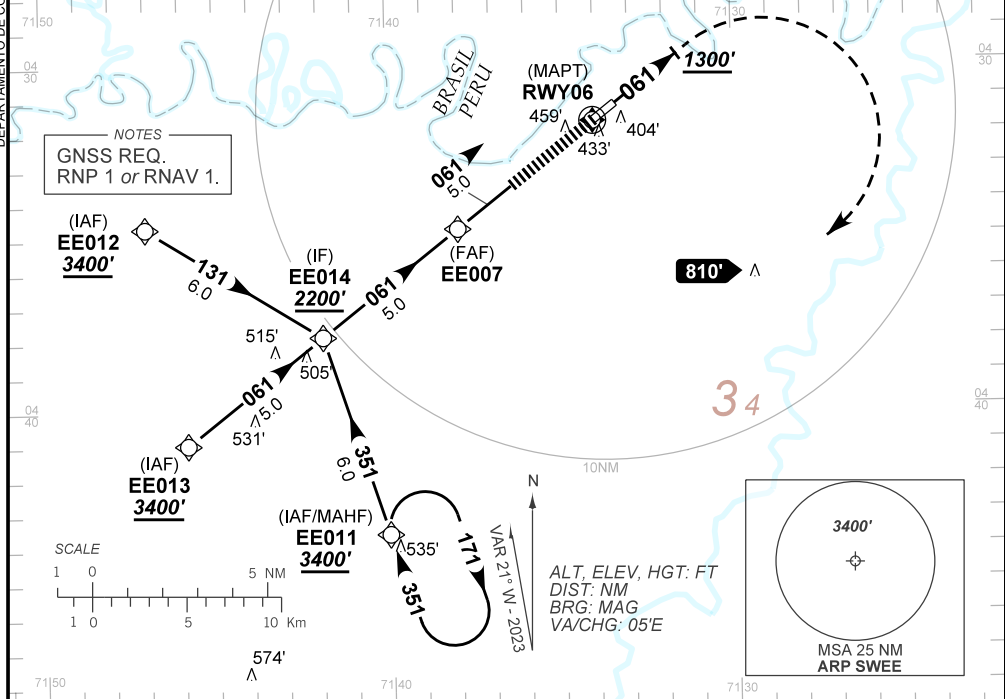
CAT (A, B, C)

DEPARTAMENTO DE CONTROLE DO ESPAÇO AÉREO

ATIS NIL	ERAA NIL	APP NIL	TWR NIL	GNDC NIL
--------------------	--------------------	-------------------	-------------------	--------------------

TEMP LNAV/VNAV MIN -10°C / MAX 30°C	FINAL CRS 061°	FAF: 2090'	LNAV/VNAV DA / (OCH): 1281' / (1000')	LNAV MDA / (OCH): 1290' / (1000')
--	---------------------------------	-----------------------------	--	--

APCH Perdida: Subir para **3400'**. Manter proa **061** até **1300'**. Após, curvar à DIREITA direto EE011 para espera.
 Missed APCH: Climb to **3400'**. Maintain heading **061** until **1300'**. After, turn RIGHT direct EE011 for holding.



			EE007	4.0	3.0	RWY06	Ground Speed (KT)	090	110	130	150	170	190
			2090	1732	1290	ALT	FPM	500	600	700	800	NA	
			1809	1451	1000	(HGT)	FAF-MAPT	NIL					

STRAIGHT-IN	CAT	A	B	C	D	E
	LNAV/VNAV	DA / (OCH)	1281' / (1000')		NA	
LNAV	MDA / (OCH)	1290' / (1000')				
	CIRCLING	MDA / (OCH)	NA			

CHANGES: NEW CHART.