

DEPARTURE CHART  
INSTRUMENT (SID)

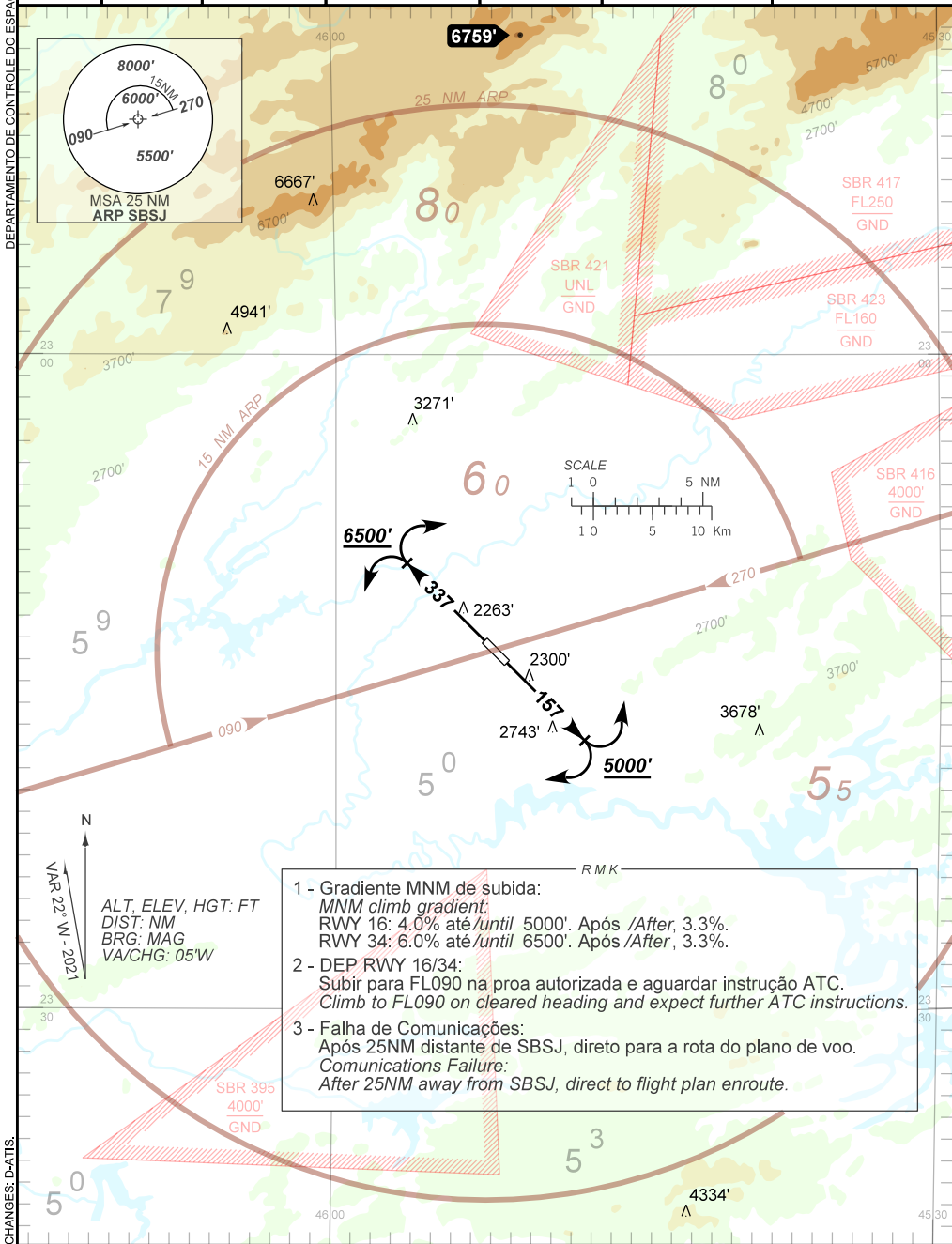
SÃO JOSÉ DOS CAMPOS / Prof. Urbano Ernesto Stumpf (SBSJ)

RWY 16/34

OMNI

AD ELEV: 2123'

TA 8000'	D-ATIS 127.925	TWR SÃO JOSÉ 118.50	APP SÃO PAULO 120.45 129.05 129.75	APP RIO 125.60 121.35 124.70	ACC CURITIBA 125.40 124.40 132.80 126.50 126.95	ACC BRASÍLIA 123.35 134.00 126.80 128.50 126.15
----------	----------------	---------------------	---------------------------------------	---------------------------------	----------------------------------------------------	----------------------------------------------------



ALT, ELEV, HGT: FT  
DIST: NM  
BRG: MAG  
VA/CHG: 05W  
VAR 22° W - 2021

- 1 - Gradiente MNM de subida:  
MNM climb gradient:  
RWY 16: 4.0% até/until 5000'. Após /After, 3.3%.  
RWY 34: 6.0% até/until 6500'. Após /After, 3.3%.
- 2 - DEP RWY 16/34:  
Subir para FL090 na proa autorizada e aguardar instrução ATC.  
Climb to FL090 on cleared heading and expect further ATC instructions.
- 3 - Falha de Comunicações:  
Após 25NM distante de SBSJ, direto para a rota do plano de voo.  
Communications Failure:  
After 25NM away from SBSJ, direct to flight plan enroute.

CHANGES: D-ATIS: