

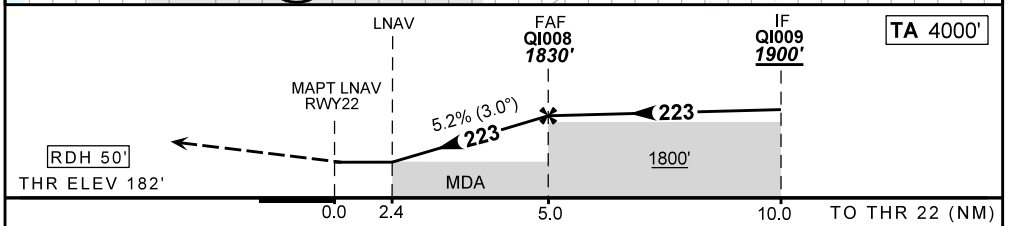
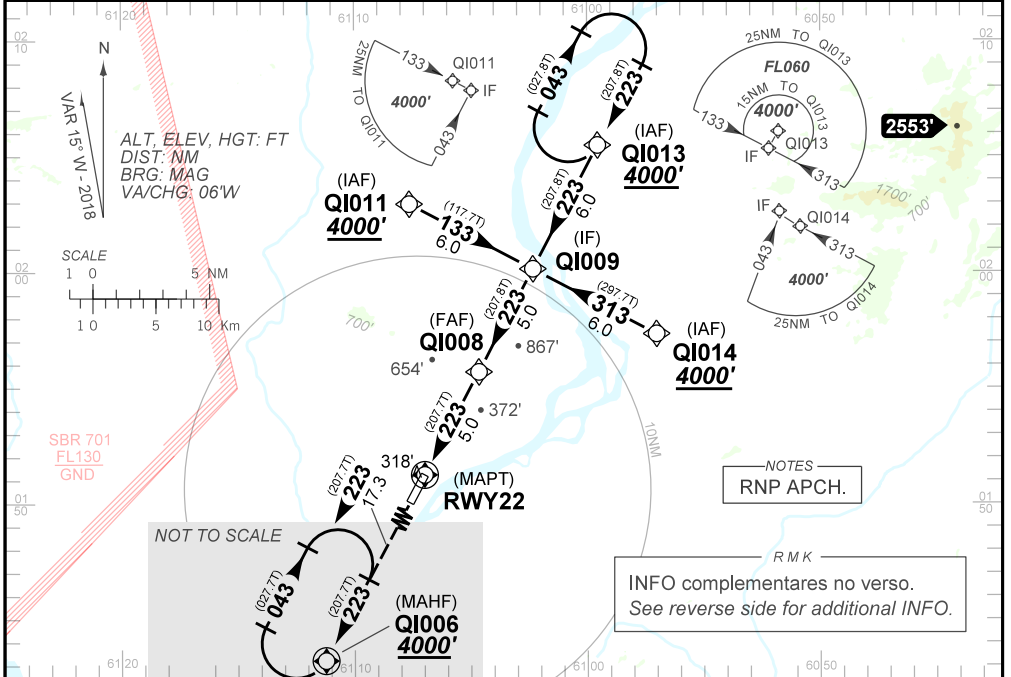
AD ELEV: 184'

RNAV(GNSS) RWY 22

ATIS NIL	APP NIL	TWR NIL	CONTROLE BOA VISTA 120.10
N/A	FINAL CRS 223°	FAF: 1830'	N/A
		LNAV RASS (SBBV) MDA / (OCH): 980' / (800')	

APCH Perdida: Subir para **4000'**. Manter rumo **223** até QI006 para espera.
Missed APCH: Climb to **4000'**. Maintain course **223** up to QI006 for holding.

RMK: 1) Realização do procedimento condicionada às regras específicas definidas pelo COMAER.
1) Procedure according specific rules defined by COMAER.



RWY22	2.4	3.0	4.0	QI008		KT	90	110	130	150	170	190
ALT	980	1187	1506	1830		FPM	500	600	700	800	900	NA
(HGT)	800	1005	1324	1642		FAF-MAPT	NA					

STRAIGHT-IN	CAT	A	B	C	D	E
LNAV	MDA / (OCH) ALS/NO ALS/ RVR ALS (m)	NA				NA
LNAV RASS (SBBV)	MDA / (OCH) ALS/NO ALS/ RVR ALS (m)	NIL / 2000 / NIL		NIL / 3600 / NIL		
CIRCLING	MDA / (OCH) VIS (m)	NA				

CHANGES: NEW CHART.

RMK

- 2 - Antes de iniciar o procedimento informar posição e intenção de voo na FREQ 123.45 MHz.
Before start procedure, report position and flight intentions at FREQ 123.45 MHZ.
- 3 - Utilizar o altímetro de SBBV.
Use altimeter setting from SBBV.
- 4 - Após a MDA, ao prosseguir para pouso, atentar para condições da pista e para a possibilidade de incursões em pista.
After the MDA, when proceeding for landing, watch field conditions to avoid runway incursions.
- 5 - Dados complementares:
Complementary data:

IDENT	LATITUDE/LONGITUDE
QI006	N01:35.80 W 61:15.06
QI008	N01:55.68 W 61:04.67
QI009	N02:00.13 W 61:02.34
QI011	N02:02.93 W 61:07.65
QI013	N02:05.47 W 60:59.55
QI014	N01:57.32 W 60:57.04
RWY22	N01:51.24 W 61:06.99