

**INSTRUMENT APPROACH  
CHART (IAC)**

**TARAUACÁ/ Tarauacá (SBTK)**

**RNP RWY 15**

(CAT A, B, C)

**AD ELEV: 630'**

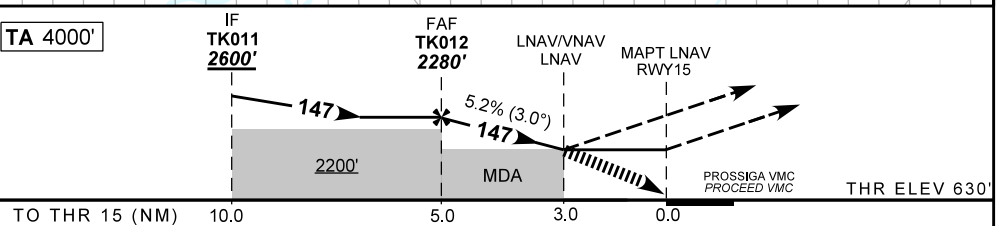
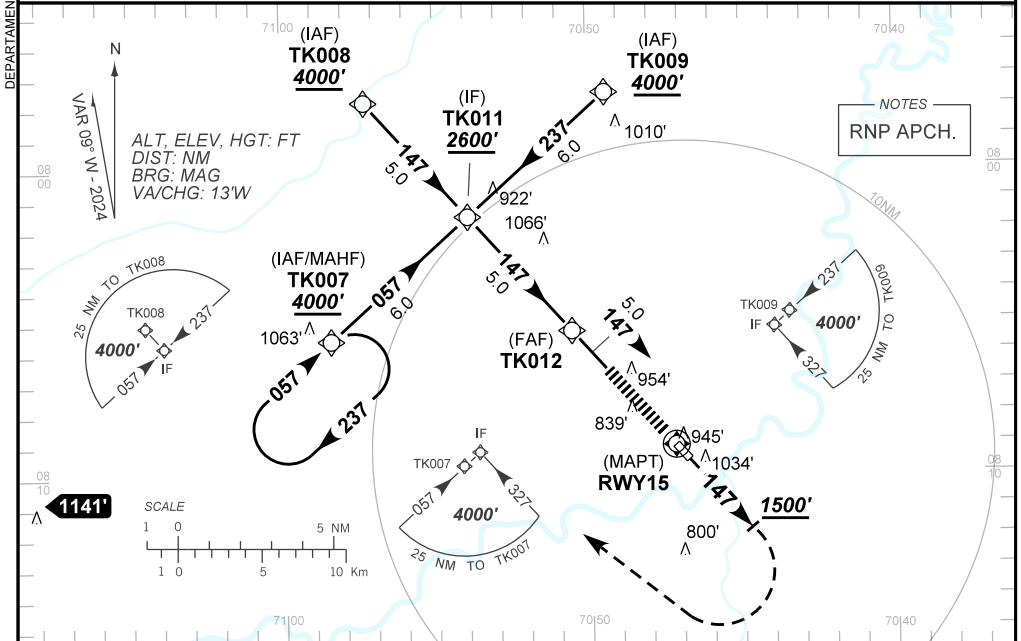
|   |                          |                      |   |   |
|---|--------------------------|----------------------|---|---|
| ATIS<br>NIL                                 | ERAA<br><b>130.425</b>   | APP<br>NIL           | TWR<br>NIL                                      | GNDC<br>NIL                                 |
| TEMP LNAV/VNAV<br><b>MIN 0°C / MAX 50°C</b> | FINAL CRS<br><b>147°</b> | FAF:<br><b>2280'</b> | LNAV/VNAV<br>DA / (OCH): <b>1630' / (1000')</b> | LNAV<br>MDA / (OCH): <b>1630' / (1000')</b> |

APCH Perdida: Subir para **4000'**. Manter rumo **147** até **1500'**. Após, curvar à DIREITA direto TK007 para espera.

Missed APCH: Climb to **4000'**. Mantain course **147** until **1500'**. After, turn RIGHT direct TK007 for holding.

RMK: Prosseguir VMC a partir de 3.0NM antes do MAPT ou efetuar Aproximação Perdida.

Proceed VMC 3.0NM to MAPT or perform Missed Approach.



|  |  |  |       |      |      |       |                   |     |     |     |     |     |     |
|--|--|--|-------|------|------|-------|-------------------|-----|-----|-----|-----|-----|-----|
|  |  |  | TK012 | 4.0  | 3.0  | RWY15 | Ground Speed (KT) | 090 | 110 | 130 | 150 | 170 | 190 |
|  |  |  | 2280  | 1954 | 1630 | ALT   | FPM               | 500 | 600 | 700 | 800 | NA  |     |
|  |  |  | 1650  | 1324 | 1000 | (HGT) | FAF-MAPT          | NIL |     |     |     |     |     |

|             |                         |                  |   |                 |   |   |
|-------------|-------------------------|------------------|---|-----------------|---|---|
| STRAIGHT-IN | CAT                     | A                | B | C               | D | E |
|             | LNAV/VNAV               | DA / (OCH)       |   | 1630' / (1000') |   |   |
| LNAV        | ALS/NO ALS/ RVR ALS (m) | NIL / 5000 / NIL |   |                 |   |   |
|             | MDA / (OCH)             | 1630' / (1000')  |   | NA              |   |   |
| CIRCLING    | ALS/NO ALS/ RVR ALS (m) | NIL / 5000 / NIL |   |                 |   |   |
|             | MDA / (OCH)             | NA               |   |                 |   |   |
|             | VIS (m)                 |                  |   |                 |   |   |

CHANGES: NEW CHART.