

INSTRUMENT APPROACH
CHART (IAC)

PONTA PORÃ / Ponta Porã, INTL (SBPP)

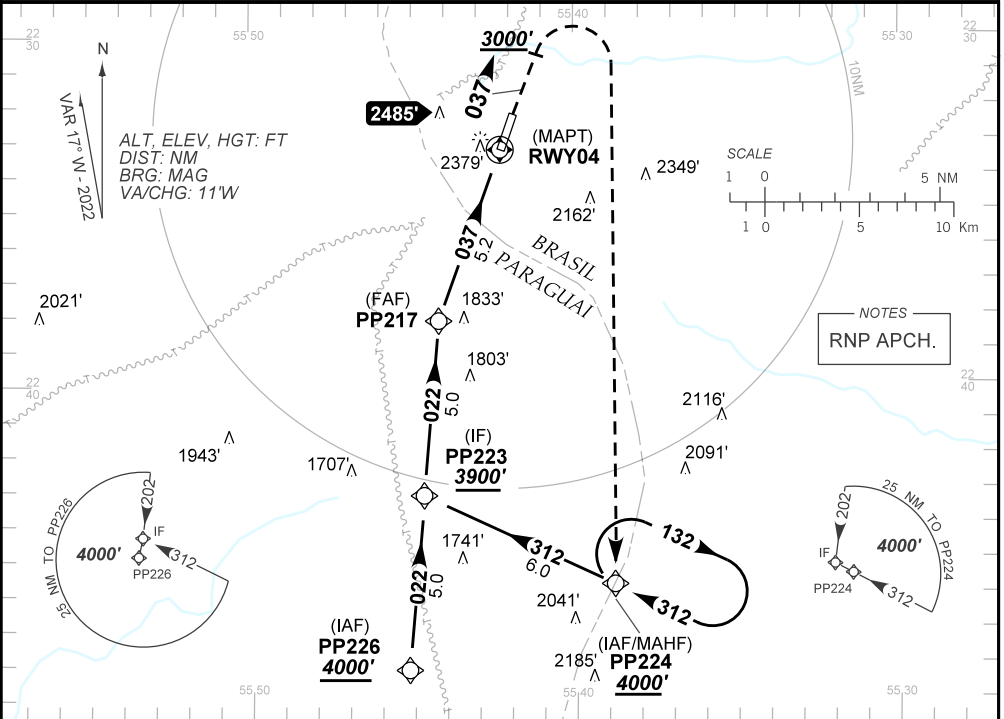
AD ELEV: 2156'

RNP RWY 04

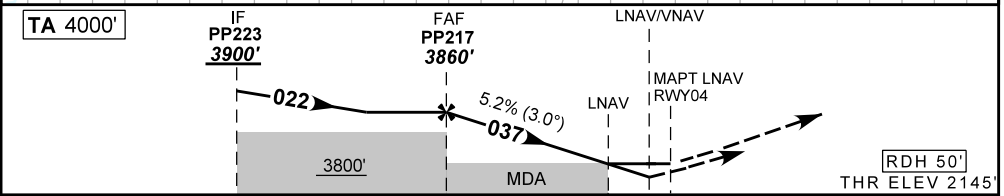
ATIS NIL	APP NIL	AFIS PONTA PORÃ 125.90	GNDC NIL
TEMP LNAV/VNAV MIN -10°C / MAX 53°C	FINAL CRS 037°	FAF: 3860'	LNAV/VNAV DA / (OCH): 2538' / (393')
		LNAV MDA / (OCH): 2630' / (490')	

APCH Perdida: Subir para **4000'**. Manter rumo **037°** até **3000'**. Após, curvar à DIREITA direto PP224 para espera.
Missed APCH: Climb to **4000'**. Maintain course **037°** to **3000'**. After, turn RIGHT direct PP224 for holding.

DEPARTAMENTO DE CONTROLE DO ESPAÇO AÉREO



NOTES
RNP APCH.



TO THR 04 (NM)	10.2	5.2	1.4	1.0	0.0
----------------	------	-----	-----	-----	-----

	PP217	4.0	3.0	2.0	1.4	RWY04	Ground Speed (KT)	090	110	130	150	170	190
	3860	3469	3150	2832	2630	ALT	FPM	500	600	700	800	900	NA
	1715	1324	1005	687	490	(HGT)	FAF-MAPT	NIL					

STRAIGHT-IN	CAT	A	B	C	D	E	
	DA / (OCH)	2538' / (393')					NA
LNAV/VNAV	ALS/NO ALS/ RVR ALS (m)	NIL / 1800 / NIL					
	MDA / (OCH)	2630' / (490')					
LNAV	ALS/NO ALS/ RVR ALS (m)	NIL / 1800 / NIL			NIL / 2300 / NIL		
	MDA / (OCH)	NA					
CIRCLING	MDA / (OCH)	NA					
	VIS (m)	NA					

CHANGES: LAYOUT, MISSED APCH, OCH.