

**INSTRUMENT APPROACH  
CHART (IAC)**

**JUNDIAÍ / Comandante Rolim Adolfo Amaro (SBJD)**

**RNP X RWY 18**

(CAT A, B, C)

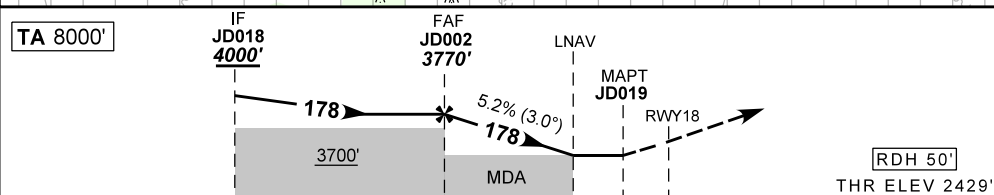
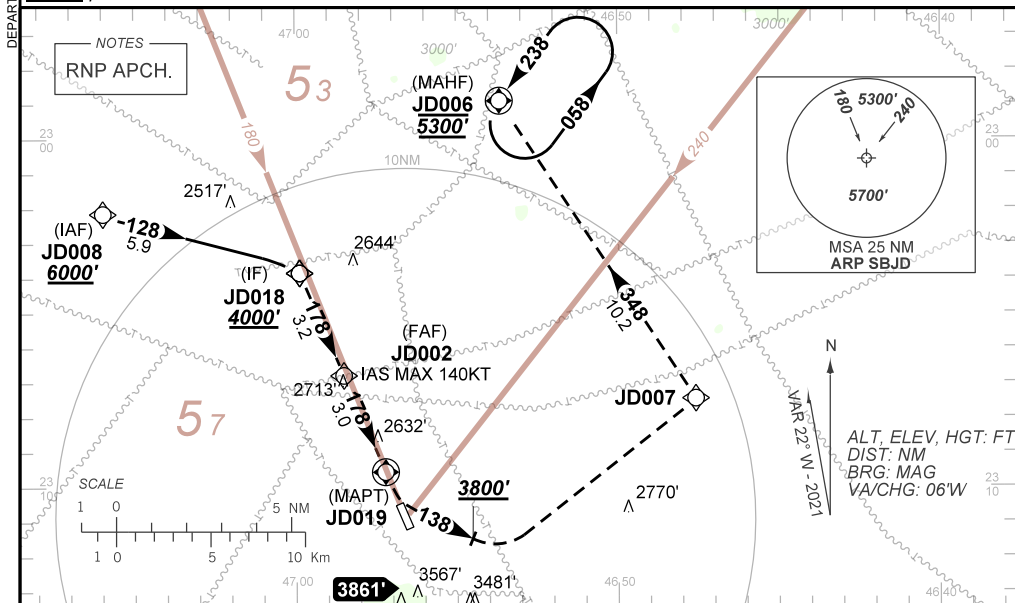
**AD ELEV: 2470'**

ATIS NIL	APP SÃO PAULO 119.05 119.25 119.80 120.05 120.45 120.85 122.75 123.25 124.15	AFIS 118.75	TWR JUNDIAÍ 118.75	GNDC JUNDIAÍ 121.65
-------------	--	----------------	-----------------------	------------------------

N/A	FINAL CRS 178°	FAF: 3770'	N/A	LNAV MDA / (OCH): <b>REFER TO MNM</b>
-----	-------------------	---------------	-----	--

APCH Perdida: 1) Subir para **5300'**, gradiente (\*VER MNM). Manter o rumo **138** até **3800'**. Após, curvar à ESQUERDA direto JD007. Curvar à ESQUERDA, rumo **348** até JD006 para espera. 2) IAS MAX 150KT até **3800'**.

Missed APCH: 1) Climb to **5300'**, MNM gradient (\*REFER TO MNM). Maintain course **138** until **3800'**. After, turn LEFT direct JD007. After, turn LEFT course **348** until JD006 for holding. 2) IAS MAX 150KT until **3800'**.



TO THR 18 (NM)	7.2	4.0	1.0	0.0
TO MAPT (NM)	6.2	3.0	0.0	0.0

	JD002	2.5	1.5	RWY18	Ground Speed (KT)	090	110	130	150	170	190
		3770	3290	2960	FPM	500	600	700	800	NA	NA
		1341	860	530	(HGT)						
					FAF-MAPT						NA

STRAIGHT-IN	CAT	A	B	C	D	E
LNAV	MDA / (OCH)	2960' / (530')				
Missed APCH Climb gradient	5.0%	NIL / 1600 / NIL		NIL / 2400 / NIL		NA
LNAV	MDA / (OCH)	3290' / (860')				
		NIL / 1600 / NIL		NIL / 2000 / NIL		
		NIL / 1600 / NIL		NIL / 4000 / NIL		
CIRCLING	MDA / (OCH)	NA				
	VIS (m)					

CHANGES: AFIS, FREQ, LAYOUT, VIS.