

**INSTRUMENT APPROACH
CHART (IAC)**

JAGUARUNA / Regional Sul (SBJA)

AD ELEV: 115'

RNP RWY 23

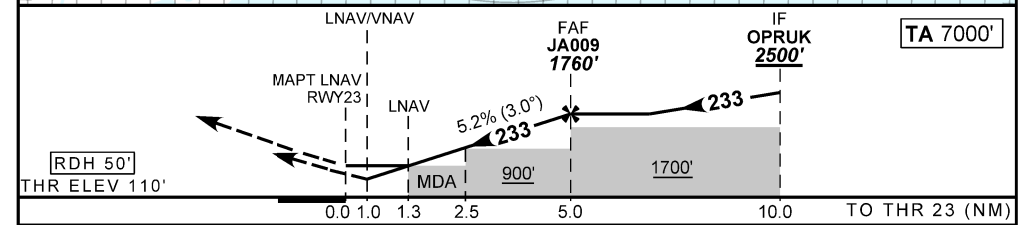
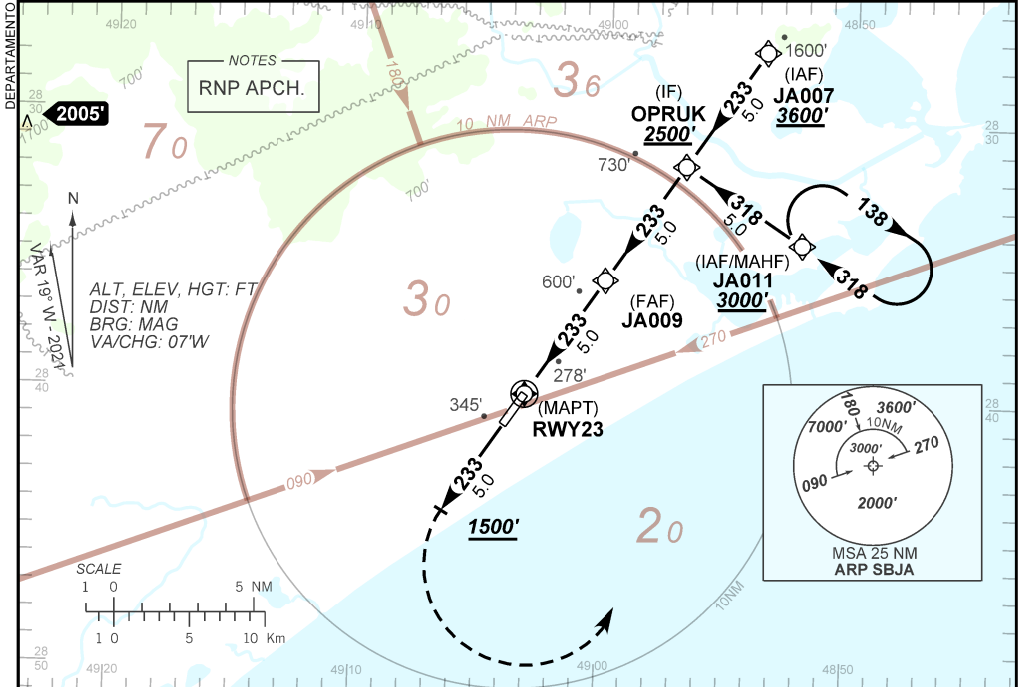
ATIS NIL	AFIS JAGUARUNA 130.70	TWR NIL	GNDC NIL
-------------	--------------------------	------------	-------------

TEMP LNAV/VNAV MIN -10°C / MAX 50°C	FINAL CRS 233°	FAF: 1760'	LNAV/VNAV DA / (OCH): REFER TO MNM	LNAV MDA / (OCH): 580' / (470')
---	-------------------	---------------	--	---

APCH Perdida: Subir para **3000'**. Manter rumo **233** até **1500'**. Após, curvar à ESQUERDA para espera em JA011.

Missed APCH: Climb to **3000'**. Maintain course **233** until **1500'**. After, turn LEFT to JA011 for holding.

RMK: 1) IAS MAX 230 KT entre JA011 e OPRUK. 2) Proibido para circular pelo setor W.
1) IAS MAX 230 KT BTN JA011 and OPRUK. 2) Prohibited circling through W sector.



RWY23	1.3	2.5	3.0	4.0	JA009		Ground Speed (KT)	090	110	130	150	170	190
ALT	580	955	1116	1434	1760		FPM	500	600	700	800	900	NA
(HGT)	470	845	1006	1324	1650		FAF-MAPT	NA					

STRAIGHT-IN	CAT	A		B		C		D		E
		DA / (OCH)	482' / (380')		501' / (400')		NIL / 1800 / NIL			
LNAV/VNAV	ALS/NO ALS/ RVR ALS (m)	NIL / 1700 / NIL		NIL / 1700 / NIL		NIL / 2200 / NIL		NIL / 1800 / NIL		NA
		MDA / (OCH)	580' / (470')		NIL / 1700 / NIL		NIL / 2200 / NIL			
LNAV	ALS/NO ALS/ RVR ALS (m)	NIL / 1700 / NIL		NIL / 1700 / NIL		NIL / 2200 / NIL		NIL / 1800 / NIL		NA
		MDA / (OCH)	580' / (470')		NIL / 1700 / NIL		NIL / 2200 / NIL			
CIRCLING	VIS (m)	NIL / 1700 / NIL		NIL / 1700 / NIL		NIL / 2200 / NIL		NIL / 1800 / NIL		NA
		MDA / (OCH)	580' / (470')		NIL / 1700 / NIL		NIL / 2200 / NIL			