

**INSTRUMENT APPROACH
CHART (IAC)**

CACOAL / Cacoal (SSKW)

AD ELEV: 817'

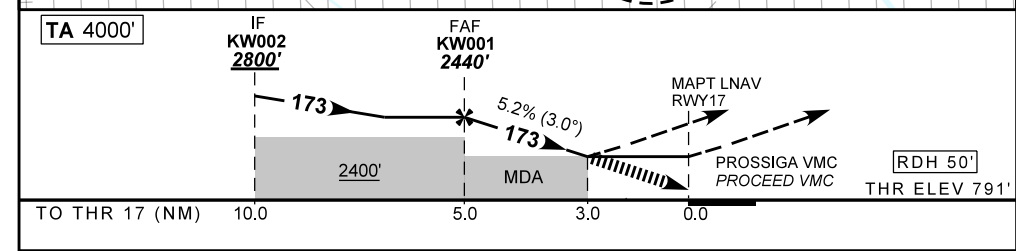
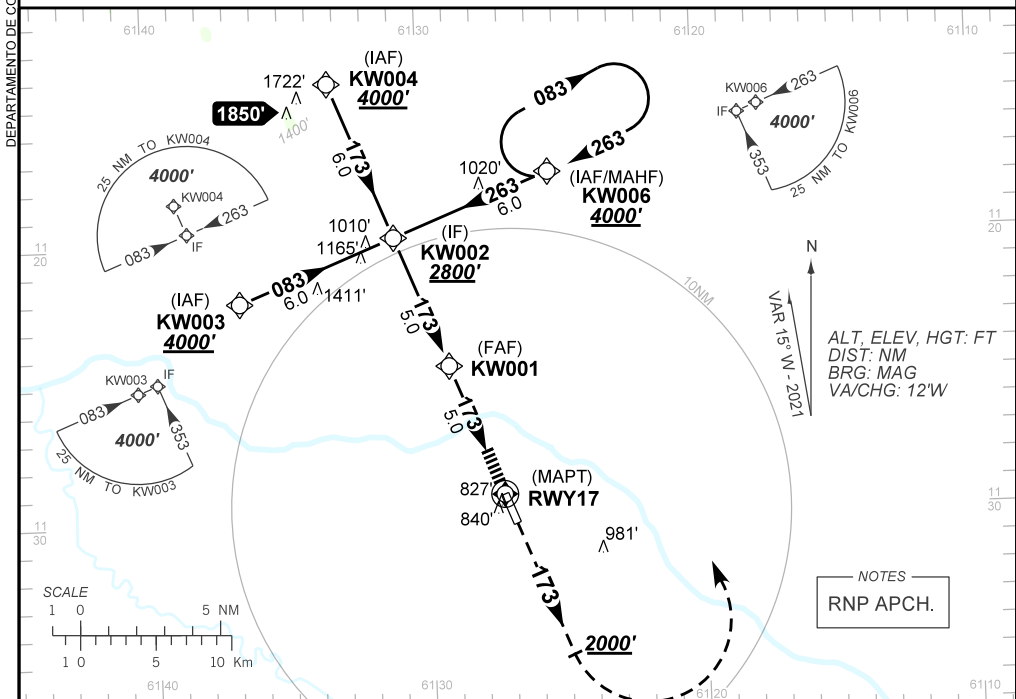
RNP RWY 17

ATIS NIL	APP NIL	AFIS CACOAL 131.10	GNDC NIL
--------------------	-------------------	------------------------------	--------------------

TEMP LNAV/VNAV MIN -20°C / MAX 50°C	FINAL CRS 173°	FAF: 2440'	LNAV/VNAV DA / (OCH): 1791' / (1000')	LNAV MDA / (OCH): 1800' / (1000')
-----------------------------------------------	--------------------------	----------------------	-------------------------------------------------	---------------------------------------------

APCH Perdida: Subir para **4000'**. Manter rumo **173** até **2000'**. Após, curvar à ESQUERDA direto KW006 para espera.

Missed APCH: Climb to **4000'**. Maintain course **173** until **2000'**. After, turn LEFT direct KW006 for holding.



			KW001	4.0	3.0	RWY17	Ground Speed (KT)	090	110	130	150	170	190
			2440	2115	1800	ALT	FPM	500	600	700	800	900	NA
			1649	1324	1000	(HGT)	FAF-MAPT	NIL					

STRAIGHT-IN	CAT	A	B	C	D	E	
	DA / (OCH)	1791' / (1000')					NA
LNAV/VNAV	ALS/NO ALS/ RVR ALS (m)	NIL / 5000 / NIL					
	MDA / (OCH)	1800' / (1000')					
LNAV	ALS/NO ALS/ RVR ALS (m)	NIL / 5000 / NIL					
	MDA / (OCH)	NA					
CIRCLING	VIS (m)	NA					

CHANGES: MNM OPR. LAYOUT.

DEPARTAMENTO DE CONTROLE DO ESPAÇO AÉREO