

**INSTRUMENT APPROACH  
CHART (IAC)**

**VALENÇA / Valença (SNVB)**

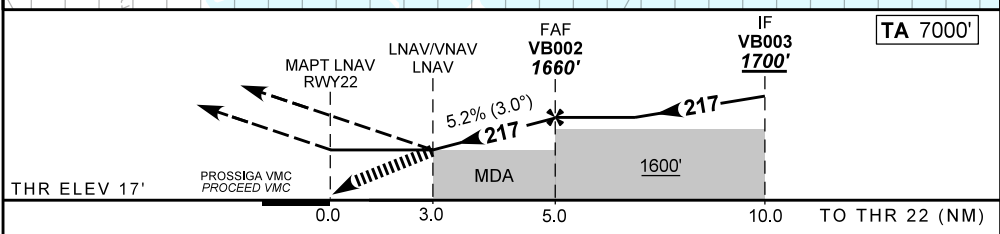
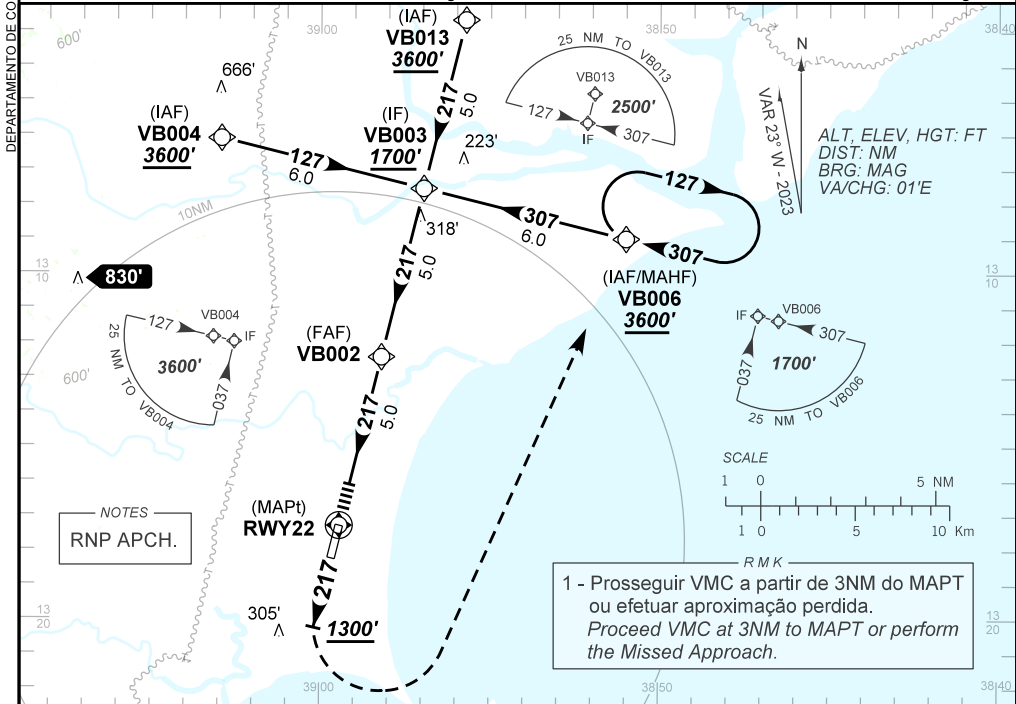
**RNP RWY 22**

**AD ELEV: 17'**

ATIS NIL	ERAA 128.00	APP SALVADOR 119.35 119.80 120.80 129.45		TWR NIL	GNDC NIL
TEMP LNAV/VNAV MIN -10°C / MAX 50°C	FINAL CRS 217°	FAF: 1660'	LNAV/VNAV DA / (OCH): 1017' / (1000')	LNAV MDA / (OCH): 1020' / (1000')	

APCH Perdida: Subir para **3600'**. Manter proa **217** até **1300'**. Após curva à ESQUERDA direto VB006 para espera.

Missed APCH: Climb to **3600'**. Maintain heading **217** until **1300'**. After turn LEFT direct VB006 for holding.



RWY22	3.0	4.0	VB002						
ALT	1020	1341	1660						
(HGT)	1000	1324	1643						
Ground Speed (KT)	090	110	130	150	170	190			
FPM	500	600	700	800	900	1000			
FAF-MAPT	NIL								

STRAIGHT-IN	CAT	A	B	C	D	E
	DA / (OCH)	1017' / (1000')				
LNAV/VNAV	ALS/NO ALS/ RVR ALS (m)	NIL / 5000 / NIL				
	LNAV	MDA / (OCH)	1020' / (1000')			
ALS/NO ALS/ RVR ALS (m)		NIL / 5000 / NIL				
CIRCLING	MDA / (OCH)	NA				
	VIS (m)	NA				

CHANGES: OBST.